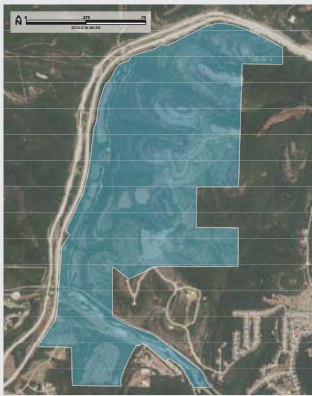


OZARK MOUNTAIN

1,011 acres near Branson, Mo.



Property boundaries are approximate; boundary surveys are in process.

- Featuring an open, grassy, flower-filled landscape of ridges and hills, known locally as knobs
- Offers sweeping views across Branson's countryside
- Glades provide home to several unusual western plants and animals
- Home to an old one-room schoolhouse that served the long-gone community of Garber

