

United States Department of the Interior
National Park Service

National Register of Historic Places Registration Form

1. Name of Property

historic name McClain Furniture Store

other names/site number N/A

2. Location

street & number 916 E. Walnut [N/A] not for publication

city or town Columbia [N/A] vicinity

state Missouri code MO county Boone code 019 zip code 65201

3. State/Federal Agency Certification

As the designated authority under the National Historic Preservation Act, as amended, I hereby certify that this nomination request for determination of eligibility meets the documentation standards for registering properties in the National Register of Historic Places and meets the procedural and professional requirements set forth in 36 CFR Part 60. In my opinion, the property meets does not meet the National Register criteria. I recommend that this property be considered significant nationally statewide locally.
(See continuation sheet for additional comments .)

Mark A. Miles 28 June 05
Signature of certifying official/Title Mark A. Miles/Deputy SHPO Date

Missouri Department of Natural Resources

State or Federal agency and bureau

In my opinion, the property meets does not meet the National Register criteria.
(See continuation sheet for additional comments .)

Signature of certifying official/Title _____ Date _____

State or Federal agency and bureau _____

4. National Park Service Certification

I hereby certify that the property is:

entered in the National Register.
See continuation sheet .

determined eligible for the National Register.
See continuation sheet .

determined not eligible for the National Register.

removed from the National Register.

other, (explain:)

Signature of the Keeper _____ Date of Action _____

**McClain Furniture Store
Boone County, Missouri**

5. Classification

Ownership of Property	Category of Property	Number of Resources Within Property	
		Contributing	Non-contributing
<input checked="" type="checkbox"/> private	<input checked="" type="checkbox"/> building(s)	1	0 buildings
<input type="checkbox"/> private	<input type="checkbox"/> building(s)	0	0 sites
<input type="checkbox"/> public-local	<input type="checkbox"/> district	0	0 structures
<input type="checkbox"/> public-State	<input type="checkbox"/> site	0	0 objects
<input type="checkbox"/> public-Federal	<input type="checkbox"/> structure	1	0 Total
<input type="checkbox"/> object			

Name of related multiple property listing.

Number of contributing resources previously listed in the National Register.

Historic Resources of Columbia, Missouri N/A

6. Function or Use

Historic Functions

Commerce/Trade: Specialty Store

Current Functions

Vacant/ Not in use

7. Description

Architectural classification

Other: Two-Part Commercial Block

Materials

foundation Concrete

walls Brick

Stucco

roof not visible

other _____

See continuation sheet []

Narrative Description See continuation sheet [x].

**McClain Furniture Store
Boone County, Missouri**

8. Statement of Significance

Applicable National Register Criteria

A Property is associated with events that have made a significant contribution to the broad patterns of our history.

B Property is associated with the lives of persons significant in our past.

C Property embodies the distinctive characteristics of a type, period, or method of construction or represents the work of a master, or possesses high artistic values, or represents a significant and distinguishable entity whose components lack individual distinction.

D Property has yielded, or is likely to yield, information important in prehistory or history.

Criteria Considerations

Property is:

A owned by a religious institution or used for religious purposes.

B removed from its original location.

C a birthplace or grave.

D a cemetery.

E a reconstructed building, object, or structure.

F a commemorative property.

G less than 50 years of age or achieved significance within the past 50 years.

Narrative Statement of Significance

See continuation sheet [x].

9. Major Bibliographic References

Bibliography See continuation sheet [x].

Previous documentation on file (NPS):

- preliminary determination of individual listing (36 CFR 67) has been requested
- previously listed in the National Register
- previously determined eligible by the National Register
- designated a National Historic Landmark
- recorded by Historic American Buildings Survey
- # _____
- recorded by Historic American Engineering Record
- # _____

Areas of Significance

Commerce

Period of Significance

ca. 1930-1955

Significant Dates

N/A

Significant Person(s)

N/A

Cultural Affiliation

N/A

Architect/Builder

Builder: Knipp, Richard (1951 job)

Primary location of additional data:

- State Historic Preservation Office
- Other State Agency
- Federal Agency
- Local Government
- University
- Other:

Name of repository:

**McClain Furniture Store
Boone County, Missouri**

10. Geographical Data

Acreege of Property: less than one acre

UTM References

A. Zone	Easting	Northing	B. Zone	Easting	Northing
15	558313	4311715			
C. Zone	Easting	Northing	D. Zone	Easting	Northing

[] See continuation sheet

Verbal Boundary Description

(Describe the boundaries of the property on a continuation sheet.)

Boundary Justification

(Explain why the boundaries were selected on a continuation sheet.)

11. Form Prepared By

name/title Debbie Sheals
organization Private Contractor
date February, 2005
street & number 29 S. Ninth Street, Suite 204 telephone 573-874-3779
city or town Columbia state Missouri zip code 65201

Additional Documentation

Submit the following items with the completed form:

Continuation Sheets

Maps

- A USGS map (7.5 or 15 minute series) indicating the property's location.
- A Sketch map for historic districts and properties having large acreage or numerous resources.

Photographs

Representative black and white photographs of the property.

Additional Items

(Check with the SHPO or FOP for any additional items)

Property Owner

(Complete this item at the request of SHPO or FPO.)

name Greenwing Development, LLC (Contact person: Pat Wilson)
street & number 1123 Wilkes Blvd.
telephone 573-874-4000
city or town Columbia state MO zip code 65203

**United States Department of the Interior
National Park Service**

**National Register of Historic Places
Continuation Sheet**

Section number 7 Page 1

**McClain Furniture Store
Boone County, Missouri
Historic Resources of Downtown Columbia, Missouri**

Summary: The McClain Furniture Store, at 916 E. Walnut, in Columbia, Missouri is a large two-part commercial block with brick walls and a flat roof. It is located in the northern section of Columbia's historic commercial business district. The building was constructed ca. 1930 for the McClain Furniture Company, and the ground floor was remodeled by the same company in 1951. The wide brick façade is topped by a simple stepped parapet, and there are two pairs of double-hung wood windows in the second floor of the façade. The ground floor contains an open glass and aluminum storefront that is sheltered by a small flat metal canopy, and surrounded by smooth stucco. The furniture store is the only resource on the property, and the façade is the only elevation with high public visibility. The back wall faces an alley, and the side walls are only a few feet from neighboring commercial buildings. The secondary elevations all have flat brick walls and simple metal and glass window units. The McClain building offers an intact example of a two-part commercial block, and it is representative of Property Type A. Commercial Buildings, Subtype: Two-Part Commercial Block, as discussed in the Multiple Property Submission cover document "Historic Resources of Downtown Columbia, Missouri." It meets the registration requirements set forth in that document under Criterion A, in the area of Commerce. It has seen few exterior changes of note since the company added the new storefront in 1951, and it appears today much as it did when the McClain Store was the oldest furniture store in Columbia.

Elaboration: The McClain Furniture Store is located one block north of Broadway and one half block east of North Ninth Street, in downtown Columbia. Ninth Street and Broadway are major commercial arteries in the central business district, and most of the surroundings properties contain commercial buildings. Exceptions include a large church across the street to the north, and a house two doors to the west. Commercial buildings in the area are one and two stories tall, and like the McClain building, most sit directly on the sidewalk, with open storefronts at street level.

The McClain building is located near the center of the block, on the south side of the street; it occupies almost all of its lot, and the façade is the only elevation easily visible to the public. A narrow walkway on the east side of the building leads back to a small alley. The front part of the west side wall of the McClain building adjoins the small commercial building, and the back of that wall faces a small private parking lot. (See Figure One, 1931 Sanborn Map.)

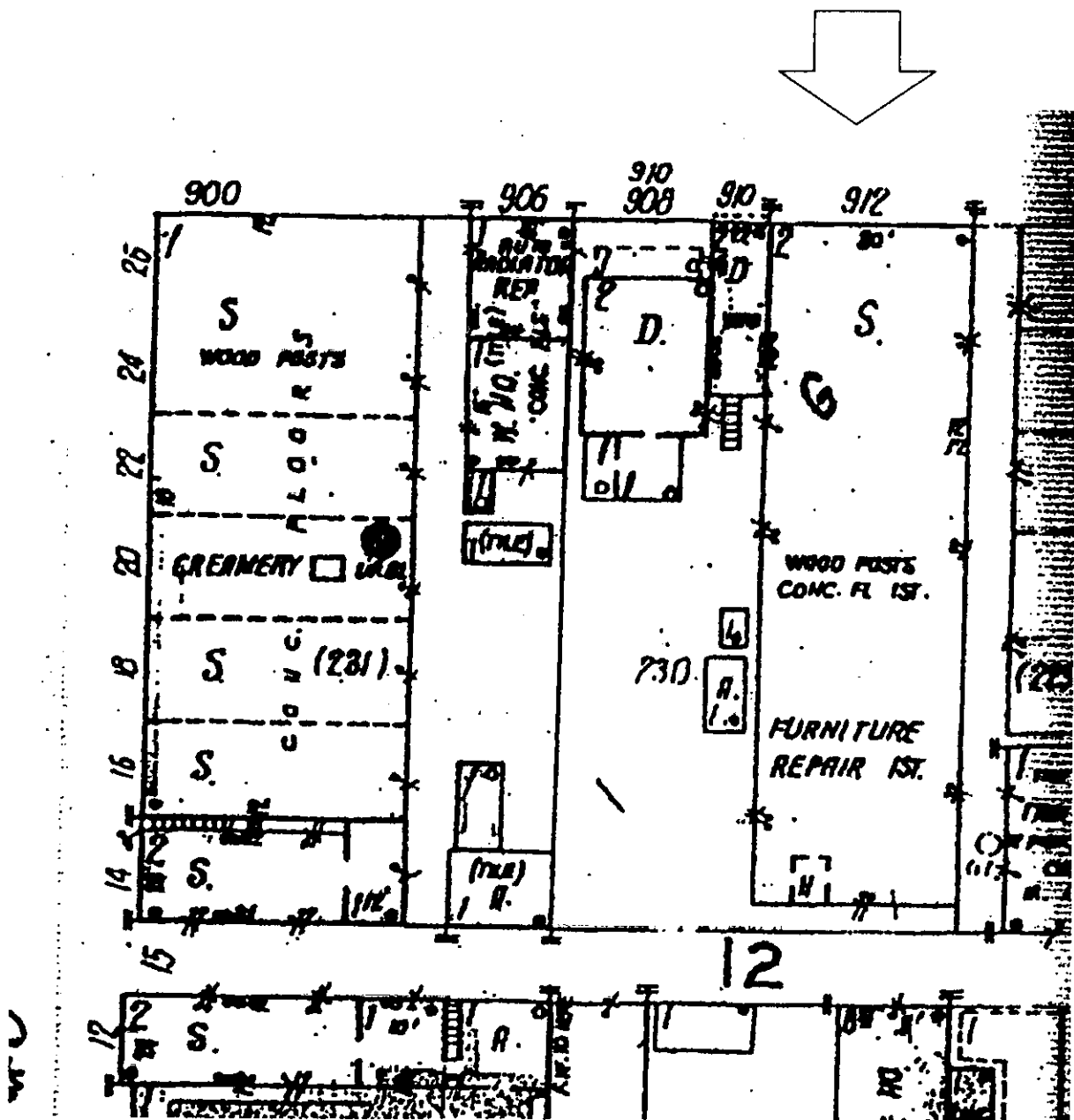
United States Department of the Interior
National Park Service

National Register of Historic Places
Continuation Sheet

Section number 7 Page 2

McClain Furniture Store
Boone County, Missouri
Historic Resources of Downtown Columbia, Missouri

Figure One. 1931 Sanborn Map of the property.



United States Department of the Interior
National Park Service

National Register of Historic Places
Continuation Sheet

Section number 7 Page 3

McClain Furniture Store
Boone County, Missouri
Historic Resources of Downtown Columbia, Missouri

The McClain building is relatively large for a single bay commercial building in the downtown area. It is 40 feet wide by 140 feet deep, with a rectangular footprint. The two-story façade, which is 30 feet tall, faces north to East Walnut Street. The façade is faced with variegated bricks that are slightly darker and more highly textured than those used on the secondary elevations. The façade is topped by a simple stepped parapet which has concrete coping, and there is a wide band of ornamental brickwork a few feet down from the top of the wall. The ornamental band consists of stepped pairs of string courses, between which runs a soldier course of smooth red bricks. The same type of smooth red bricks are also used to accent the edges of the two large window openings located at the second floor. Those window openings are each topped with a soldier course of red brick, and edged with ornamental quoins. Each opening contains a pair of early or original windows with one-over-one wood sash. Wide wooden mullions run between the windows. A darker band of soldier bricks at the base of the windows forms a visual divider between the first and second floors. All materials on the second floor of the façade appear to be original, while those below probably date to the 1951 remodeling.

A layer of smooth stucco covers the lower part of the front wall, and most of the ground floor is occupied by an open glass and aluminum storefront. The front door is recessed and set to one side, and the storefront curves back from the sidewalk to the doorway. It has large glass display windows set above low flat stuccoed bulkheads. A simple flat awning extends out from the plane of the wall above the storefront; it appears to be the same age as the rest of the storefront, with some newer materials on its lower surface. (A mural painted on the stucco above the awning is slated for removal in the near future.)

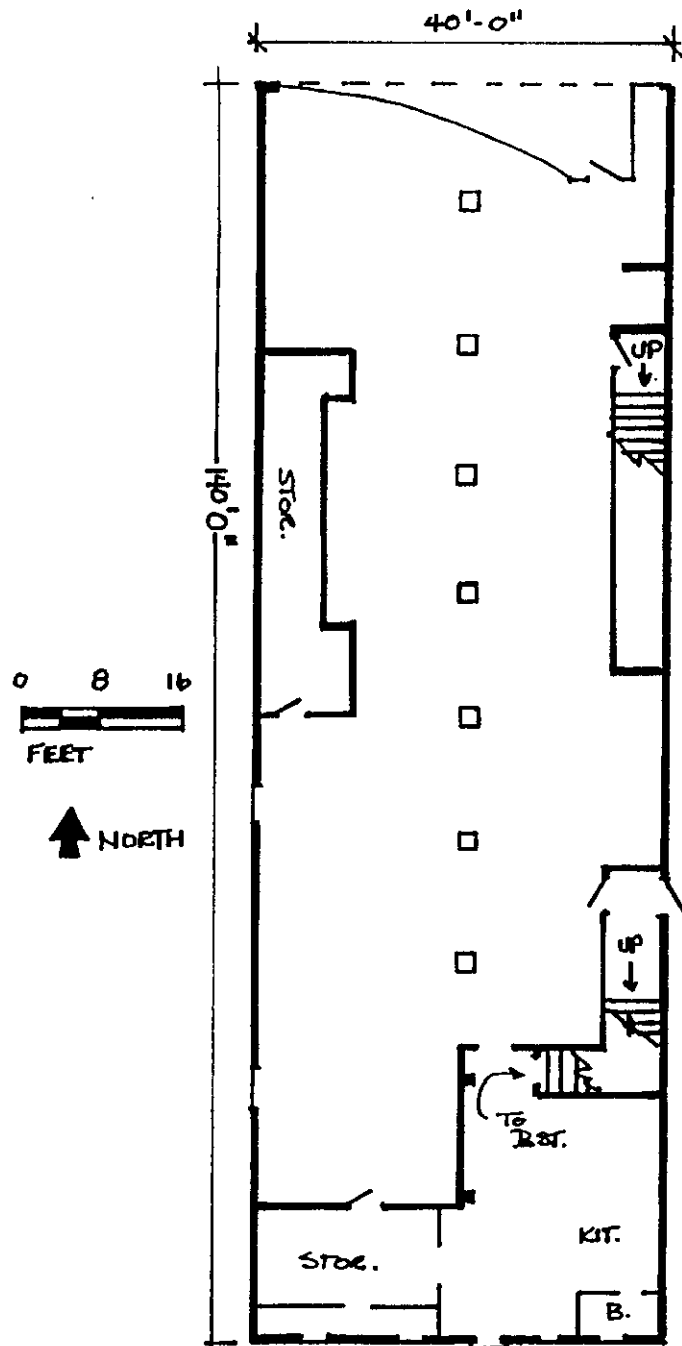
The side and back walls of the building are all similar, with flat brick walls and unadorned rectangular window openings. Most of the windows contain metal and wire-glass window sash; a few have glass-block infill that appears to be at least a few decades old. The back wall of the McClain building has a small concrete loading dock and stairs that lead to a door on the ground floor, as well as a lower door that leads to the basement. A third door on the second floor of the back wall leads to a very small metal fire escape. The second floor windows on the back have metal sash, and those on the first floor are wood, one-over-ones. All windows appear to be early or original; the back doors are newer.

United States Department of the Interior
National Park Service
National Register of Historic Places
Continuation Sheet

Section number 7 Page 4

McClain Furniture Store
Boone County, Missouri
Historic Resources of Downtown Columbia, Missouri

Figure Two. First Floor Plan.
Drawing by Debbie Sheals.



United States Department of the Interior
National Park Service
National Register of Historic Places
Continuation Sheet

Section number 7 Page 5

McClain Furniture Store
Boone County, Missouri
Historic Resources of Downtown Columbia, Missouri

The east wall of the building is separated from the property to the east by a narrow paved walkway. A small brick connector runs between the second floors of the two buildings, but is no longer accessible from inside the McClain building. The connector is approximately eight feet wide, with no windows and a flat roof. The connector is not indicated on a 1968 Sanborn map of the building and it appears to date to the 1970s or 80s.

The interior of the building features open floorplans, with a row of evenly spaced wooden posts on the first and second floors. The posts are original; most other finishes are newer. The front door leads to a large open commercial space, with smaller support spaces along the back wall. The posts in that commercial space are sheathed with drywall. Newer enclosed fire stairs along the east wall lead to the basement and the second floor.

The basement is only under the back part of the building. It has very low ceilings and small windows that face the alley. A short flight of steps in the southwest corner of the basement leads up to a doorway off the alley.

The second floor can be reached via either of the two stairways on the main level. That part of the building contains a mix of older and newer finishes; most appear to date to the middle 20th century or later. Some of the original wooden posts remain exposed at that level; they measure nearly 12" square and support a heavy beam that runs down the center of the building. Most of the exterior walls retain early or original plaster, and show that the window openings were built with very little finish. The metal side windows have no surrounding woodwork at all, and the wooden front windows have only a simple band of brick mould around the window frame.

Overall, the McClain building today looks much as it did after the 1951 remodeling project, and it meets the registration requirements set forth in the MPS cover document "Historic Resources of Downtown Columbia, MO."¹ The current storefront was installed during the period of significance, and the store today looks much as it did when it was home to the oldest furniture store in Columbia.

¹ See "Historic Resources of Downtown Columbia," Section F., for registration requirements.

**United States Department of the Interior
National Park Service**

**National Register of Historic Places
Continuation Sheet**

Section number 8 Page 6

**McClain Furniture Store
Boone County, Missouri
Historic Resources of Downtown Columbia, Missouri**

Summary: The McClain Furniture Store, at 916 E. Walnut in Columbia, Missouri, is significant in the area of Commerce, under Criterion A, with a local level of significance. The building was constructed ca. 1930 for the furniture dealer W. E. McClain, and it housed the McClain Furniture Company until 1960. McClain opened his first furniture store in Columbia in the late 1910s, and he remained active in the operation of the store on Walnut until his retirement in 1959. His sons, W. E. Jr, and Raymond G., were also involved with the business, and together, they outlasted all of McClain's early competitors in the furniture business. By 1950, the building on Walnut was home to the oldest furniture store in the community. In 1951, local contractor Richard Knipp was hired to install a new front on the ground floor; that 1951 storefront remains in place today, and the building looks much as it did in the final years of the store's operation. The period of significance for the building runs from the time of its construction, ca. 1930, to 1955, the standard fifty year cut-off point. The building serves as an intact, relatively late example of Property Type A. Commercial Buildings, Subtype: Two-Part Commercial Block. It meets the registration requirements for that property type set forth in the Multiple Property Submission Cover Document "Historic Resources of Downtown Columbia, Missouri," and falls under the historic contexts *In Every Way Far More Metropolitan than Her Sister Cities: Downtown Columbia, 1900-1955*, and *Log Stores to Capitoline Hill: Architectural Development in Downtown Columbia, 1821-1955*. The building today provides an intact, significant link with Columbia's early commercial history.

Elaboration:

Downtown Columbia has been the commercial center of the community since the town was founded in the 1820s. From the time the first plat was filed in 1821 until the mid-20th century, that area hosted almost all of the businesses in town. As the MPS cover document noted, as late as 1951: "well over half of all businesses and the vast majority of all retail establishments in operation were located in the downtown area. All of the clothing, millinery, furniture, dry goods and office supply stores listed in the [1951 City] directory were located downtown..."²

The downtown area was home to all of the furniture stores in town throughout the time period covered by the MPS Cover Document. A check of business listings in various city directories shows that not only were all of the furniture stores in Columbia

² "Historic Resources of Downtown Columbia," Section E, p. E.31.

United States Department of the Interior
National Park Service

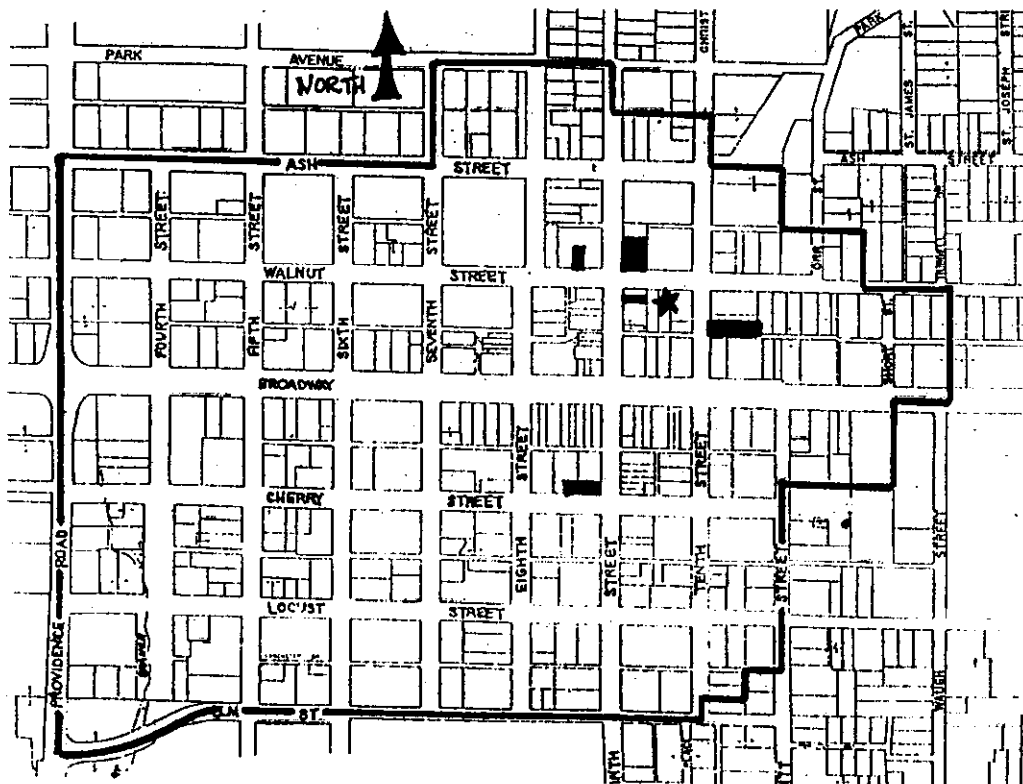
National Register of Historic Places
Continuation Sheet

Section number 8 Page 7

McClain Furniture Store
Boone County, Missouri
Historic Resources of Downtown Columbia, Missouri

located downtown, they were all within two blocks of each other.³ (See Figure Three.) The proximity, which allowed furniture shoppers to wander from one store to the next within just a few steps, apparently worked out well for all concerned; those same five or six locations hosted most of the town's furniture stores throughout the period of significance.

Figure Three. Furniture Stores in operation in Columbia in 1927. (The base map shows the boundaries of the area covered by the MPS cover document.) The McClain property is indicated by the star. These same locations hosted various furniture stores into the mid-1940s.



³ Columbia City Directories for various years from 1917-1966 were consulted for furniture company listings. All of the directories are on file with the State Historical Society of Missouri.

**United States Department of the Interior
National Park Service**

**National Register of Historic Places
Continuation Sheet**

Section number 8 Page 8

**McClain Furniture Store
Boone County, Missouri
Historic Resources of Downtown Columbia, Missouri**

William Elliot McClain, Sr. was born in Dry Glaze, Laclede County, Missouri in 1876.⁴ By 1917, he was living in Columbia and operating a small furniture store near the site of the current building. The 1917 City directory shows that he had a furniture store in a rental space located just around the corner from the current location, at 26 North Ninth Street. (That building is part of the North Ninth Street Historic District, listed 1/21/04) The directory also shows that McClain was one of five furniture merchants in town at the time, and that his competitors were all located in roughly the same locations as those shown in the map above.

McClain's business apparently outgrew its modest location within just a few years. Around 1922, he moved around the corner to a large new one-story building on Walnut Street, on the same lot as the current building. That new building did not last long, however. Sanborn maps show that it was built between 1914 and 1925, and that by 1931, it had been replaced by the present two-story building. Although the present building has a nearly identical footprint, it shows no sign of having been extended upward, and it appears that the building on the lot now was built "from scratch."

There is one early photo of McClain's first building on Walnut Street; it was published in the local paper following a major tornado in 1925. The article describing the tornado included a list of businesses in the area that had been damaged during the storm.



Figure Four.
East Walnut
Street,
looking
west. From
the
Columbia
Missourian,
May 15,
1925, p. 12.
McClain's
store is on
the right.

⁴ Raymond George McClain. "McClain Family History, Laclede County, 1795-1970." (Typescript on file at the State Historical Society of Missouri, 1970.)

United States Department of the Interior
National Park Service
National Register of Historic Places
Continuation Sheet

Section number 8 Page 9

McClain Furniture Store
Boone County, Missouri
Historic Resources of Downtown Columbia, Missouri

McClain's nearest competitor, the Huges Furniture Store, which was located across the street, suffered some of the heaviest damage in that storm. (That company repaired the damage and was still in business there two years later.) Although McClain's building was not included in the list of damaged properties printed with that article, it is possible that storm damage was discovered later, prompting demolition of the new building.

Whatever the reason, by 1931, McClain was doing business in the two-story brick building that still occupies that property.⁵ He was to remain in that job for almost three more decades. An ad for the business printed in 1940 proclaimed the availability of "Furniture, Stoves and Rugs" at the store, and listed W. E. McClain Sr., as the proprietor.⁶ The 1931 Sanborn map of the building showed that the back of the ground floor was being used for furniture repair as well. It has been assumed that McClain used the second floor for storage and support spaces; none of the directories indicate that it was used by any other businesses, and the generally open plan still in place today indicates an early commercial function.

By 1947, both of the sons had joined the family business. W. E. McClain, Sr. was by then 71 years old, and would have been glad to have the help. W. E. McClain, Jr. and Raymond G. McClain were listed as the proprietors of the store in the 1947 directory entry. Their ad included a more extensive list of goods and services: "Furniture, Stoves and Rugs, Cabinet Making, Refinishing and Upholstering."⁷ That 1947 directory also showed that only one of McClain's competitors from the 1931 directory was still in business by that time.

By 1951, that last competing furniture store had also changed ownership, making the McClain Furniture Company the oldest furniture store in Columbia. There was no shortage of competition, however. Two new furniture stores had opened on Broadway, and different owners were operating furniture stores at some of the older locations nearby. The McClains apparently felt a new look would enhance the image of the aging store, and in 1951, they hired local contractor Richard Knipp to add a modern new storefront to the building.⁸ Richard Knipp was at the time a relative newcomer to the construction business; he had established his company in 1945, with just two employees.⁹ His firm went on to become one of Columbia's larger contracting

⁵ 1931 Sanborn map, and 1931-32 City Directory.

⁶ Ads for the store appeared in several places in the 1940 City Directory.

⁷ 1947 Columbia City Directory, p. 117.

⁸ City of Columbia, Protective Inspections Department, Walnut Street Building Permit Records, #215, 4/10/1951.

⁹ Alan Havig, *From Southern Village to Midwestern City: Columbia, an Illustrated History*, (Woodland Hills, California: Windsor Publications, Inc. 1984) pp. 104-106.

United States Department of the Interior
National Park Service
National Register of Historic Places
Continuation Sheet

Section number 8 Page 10

McClain Furniture Store
Boone County, Missouri
Historic Resources of Downtown Columbia, Missouri

companies, with projects that included a large library, bank buildings, and several public schools.

The building permit record for the remodeling of McClain's store was dated April of 1951, and included the notation "new front." The wide new all-glass front no doubt offered the business more opportunity for display and helped them compete with businesses like Mehornay Furniture, which had remodeled a building on Broadway for use as a furniture store just a few years earlier. The downtown area was by then beginning to feel the effects of competition from new commercial development in outlying areas, and it was not at all unusual to see storefronts being remodeled in the area.¹⁰

The remodeling updated the front of the store, but left the traditional patterns of use and fenestration for two-part commercial blocks in place.¹¹ The ground floor continued to be open and to be used for public purposes, while the more enclosed second floor continued in its semi-private function. The McClain store is a good late example of the type of modest commercial building which helped to define the streetscapes of downtown Columbia in the first half of the 20th century. It continues to reflect its early association with one of Columbia's most prominent early furniture stores.

Property Type A. Commercial Buildings, Subtype: Two-Part Commercial Block, as discussed in "Historic Resources of Downtown Columbia, Missouri." It utilizes a typical two-part commercial block layout, with an open ground floor space designed for retail and other types of businesses which require high visibility, and a more secluded second floor for offices and other less public spaces.

The McClain family operated the store on Walnut for almost another decade after that remodeling project. W. E. McClain, Sr., did not retire until 1959, when he was 83 years old. He died within a few months of his retirement, early on January 29, 1960. He was apparently quite well-known in the community; his obituary appeared on the front page of both local papers the same day. The Columbia Missourian included a photo and article, and the Columbia Daily Tribune ran the following headline: "W. E. McClain, Sr. Dies—Founder of Furniture Firm."¹²

¹⁰ See Context III. *Log Stores to "Capitoline Hill": Architectural Development in Downtown Columbia, 1821-1955*, for more discussion of developments during this time period.

¹¹ See the MPS Cover document "Historic Resources of Downtown Columbia, Missouri," Section F, *Associated Property Types*, for a full discussion of the Commercial Buildings property type and the two-part commercial block subtype.

¹² Columbia Daily Tribune, January 29, 1960, p. 1, and Columbia Missourian, January 29, 1960, p. 1.

**United States Department of the Interior
National Park Service**

**National Register of Historic Places
Continuation Sheet**

Section number 8 Page 11

**McClain Furniture Store
Boone County, Missouri
Historic Resources of Downtown Columbia, Missouri**

The Missourian article noted that the business was at that time operated by W. E. McClain, Jr, while Raymond McClain was described as a member of the faculty of the College of Engineering at the University of Missouri. Both brothers were apparently still legally involved in the business; the 1960 city directory entry listed W. E. Jr. as the president of the firm, Raymond as the vice-president, and W. E. Jr.'s wife Ramona as the Secretary-Treasurer. Regardless of the formal ownership situation, the store barely outlived its founder; by 1961, the furniture store had closed and the Pioneer Venetian Blind Company occupied the building.

Today, the building looks much as it did when East Walnut Street served as the center of Columbia's retail furniture industry. It is significant as the home of one of the most prominent and long-lived early 20th century furniture stores in the community, and it clearly evokes a sense of its time and place.

Appendix: McClain Furniture Store Chronology

1876 William E. McClain is born in Laclede County, MO.

1917 W. E. McClain is operating a furniture store at 26 N. Ninth St., just around the corner from this location.

ca. 1922 McClain opens a store in a one story building at this location. (His obituary claimed he started the business in 1922.)

1925 Sanborn shows a one story building here, as does a photo in the local paper. The photo was taken in the aftermath of a major tornado, which may have damaged the old store, even though there was no mention in the article about it.

1927 Directory shows McClain's store at this location. There were two other furniture stores on the same block of Walnut, and two others within a block, one on N. 9th one on N. 10th. Of the six furniture stores in business in town at the time, five were within a block of this building. The McClain store was the only one of those listed to remain in business as of the 1951 directory.

United States Department of the Interior
National Park Service
National Register of Historic Places
Continuation Sheet

Section number 8 Page 12

McClain Furniture Store
Boone County, Missouri
Historic Resources of Downtown Columbia, Missouri

1930, ca. McClain replaces his single story building with the two story structure now in place on the same lot. (No sign that this building was once one story tall; must be all-new.)

1931 Sanborn shows the 2 story building, labeled "Furniture Repair 1st." City directory lists six furniture stores in Columbia, five of which were within a block of this one. The sixth was just two blocks away. McClain's two sons were living with him and his wife, and were described as "students" in the city directory.

1940 Directory entry lists W. E. McClain Sr. as the proprietor of the furniture store, and includes ads proclaiming the availability of "Furniture, Stoves and Rugs". Furniture stores in town all in the same locations, several with new names.

1947 City Directory shows that W. E. McClain's sons were running the business by that time. Their ad listed "Furniture, Stoves and Rugs, Cabinet Making, Refinishing and Upholstering." Only one of the other furniture stores listed in the 1931 directory were still in business.

1951 Columbia Building permit records show local contractor Richard Knipp getting a permit for a "new front" for the McClain property at 912 E. Walnut. It has been assumed that he installed the current storefront at that time. None of McClain's competitors of 1931 were still in business, per directory listings.

1959 W. E. McClain retires at age 83, leaving the business in the hands of his sons. The 1960 directory listed the following officers for the company: W. E. McClain, Jr., who was operating it in 1960, and Raymond G. McClain, who was working there in 1954, but listed as faculty of MU Engineering School in 1960.

1960, January 29. W. E. McClain's obituary makes the front page of both local newspapers. Headline in the Tribune—"W. E. McClain Sr., Dies—Founder of Furniture Firm."

1960 Last year the store is listed in directories. Pioneer Venetian Blind Company occupied the building into the mid-1960s.

**United States Department of the Interior
National Park Service**

**National Register of Historic Places
Continuation Sheet**

Section number 9 Page 13

**McClain Furniture Store
Boone County, Missouri
Historic Resources of Downtown Columbia, Missouri**

Sources

City of Columbia, Protective Inspections Department, Walnut Street Building Permit Records Index, #215, 4/10/1951.

Deutch, Miriam. Images from Columbia's Past: 1865-1945. (Introduction by Francis Pike.) Columbia: Columbia Daily Tribune and Waters Publications, 1982.

Havig, Alan R. From Southern Village to Midwestern City: Columbia, an Illustrated History. Woodland Hills, California: Windsor Publications, Inc. 1984.

McClain, Raymond George. "McClain Family History, Laclede County, 1795-1970." (Typescript on file at the State Historical Society of Missouri, 1970.)

Sanborn Fire Insurance Company, Maps of Columbia, 1917-1968.

Sheals, Debbie. "Historic Resources of Downtown Columbia, Missouri." Multiple Property Submission Cover Document, 2003.

"W. E. McClain, Sr. Dies—Founder of Furniture Firm." Columbia Daily Tribune, January 29, 1960, p. 1.

"W. E. McClain, Sr." Columbia Missourian, January 29, 1960. p. 1.

**United States Department of the Interior
National Park Service**

**National Register of Historic Places
Continuation Sheet**

Section number 10, photographs Page 14

**McClain Furniture Store
Boone County, Missouri
Historic Resources of Downtown Columbia, Missouri**

Verbal Boundary Description

The east half of Lot 230 of the Original Town now City of Columbia, measuring 40 feet by 124.5 feet.

Boundary Justification

The boundaries encompass all of the land currently and historically associated with the building.

Photographs

The following information is the same for all photographs:

McClain Furniture Store
916 E. Walnut Street
Boone County, MO
Debbie Sheals
February, 2005

Negatives on file with Debbie Sheals 29 South Ninth Street, Suite 204, Columbia, MO
65201

List of Photographs

See photo key for description of camera angle.

1. Façade, (north elevation) from Walnut Street.
2. Streetscape, looking east on Walnut St.
3. Ground floor, façade.
4. Facade, looking west.
5. East side elevation.
6. Rear (south) elevation.
7. Rear, and west side elevation.
8. Rear streetscape, looking west down the alley.
9. Storefront, interior.
10. Ground floor interior.
11. Second floor interior, looking south.
12. Second floor interior, looking north.

United States Department of the Interior
National Park Service

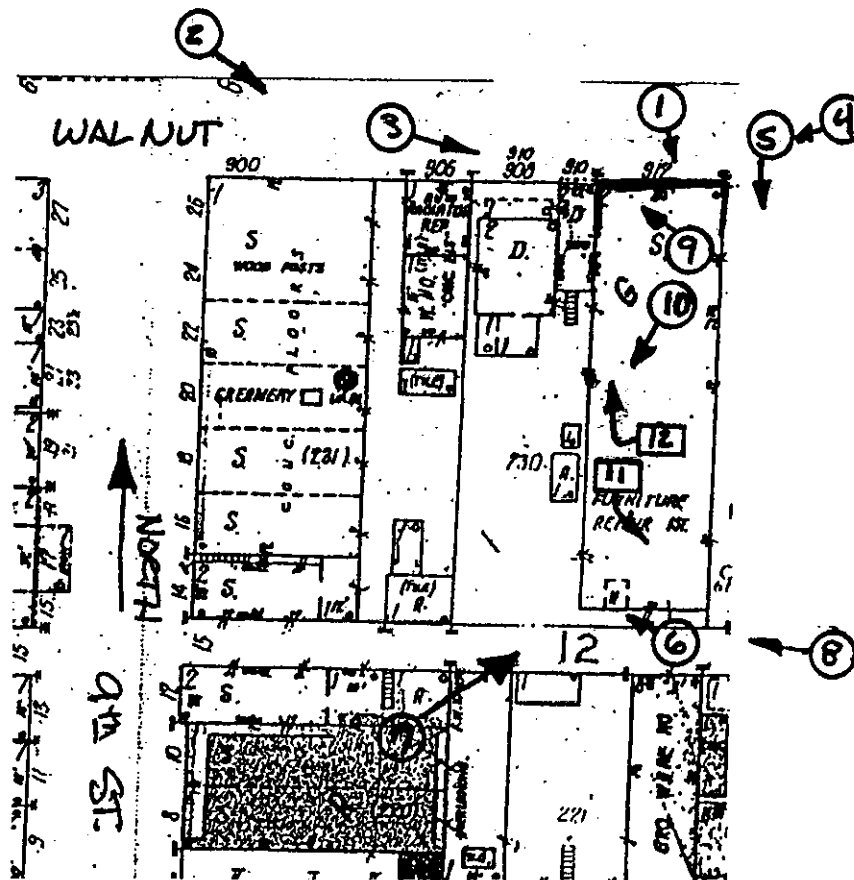
National Register of Historic Places
Continuation Sheet

Section number photographs Page 15

McClain Furniture Store
Boone County, Missouri
Historic Resources of Downtown Columbia, Missouri

Photo Key.

Circles are for exterior and ground floor interior photos, and squares indicate second floor interior photos.





MCLLAIN
 FURNITURE STORE
 4313
 916 E. WALNUT
 COLUMBIA,
 BOONVILLE COUNTY, MO
 15/558 313 (4311 715)

57'30"
 4312
 4116
 7561 IV NW (HUNTSDALE)
 1964



















