

Wallace State Park

BY THE NUMBERS

LOCATION: Clinton County

NUMBER OF ACRES: 557.61

NUMBER OF FULL-TIME STAFF: 3

NUMBER OF PART-TIME STAFF: 2

VOLUNTEER HOURS:* 8,931

STEWARDSHIP HOURS: 62

2022 ATTENDANCE:* 197,709

MILES OF TRAIL: 8.1

NUMBER OF STRUCTURES: 19

MILES OF ROADWAYS: 2.92

NUMBER OF PROGRAMS PRESENTED:* 18

STATE SALES TAX PAID:* \$6,159.57

LOCAL SALES TAX PAID:* \$2,186.83

TOTAL SALES TAX: \$8,346.39

BUDGET

SMALL MAINTENANCE & REPAIR BUDGET: \$12,000.00

ANNUAL BUDGET: \$216,279.00

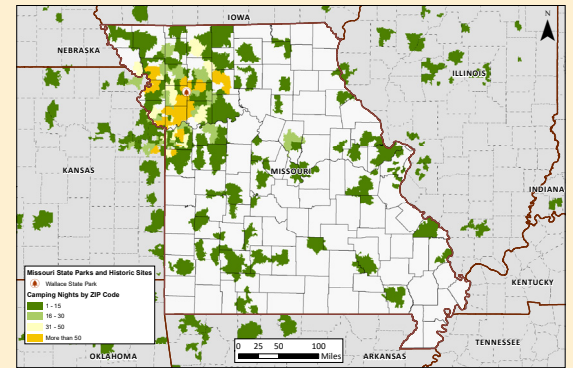
CAMPING & LODGING

NUMBER OF CAMPING NIGHTS SOLD:* 7,907

NUMBER OF CAMPSITES: 83

NUMBER OF OVERNIGHT GUESTS:* 21,884

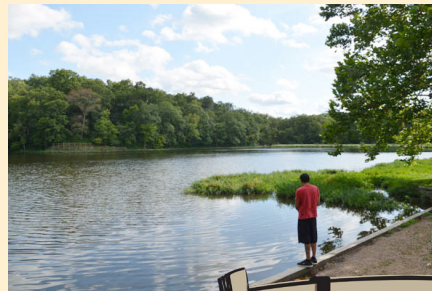
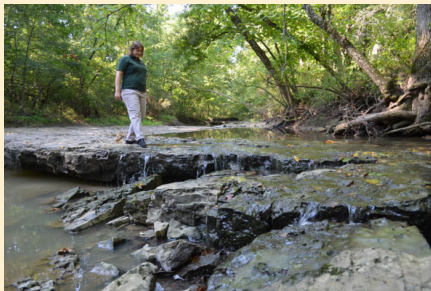
CAMPING NIGHTS SOLD BY ZIP CODE: >>>>>>



SPECIAL EVENTS

MISSOURI STATE PARK EVENTS: 2

PHOTO ALBUM



* All numbers through December 2022. † Information includes park and concession-run operations. ** Estimated park and concession sales tax paid.