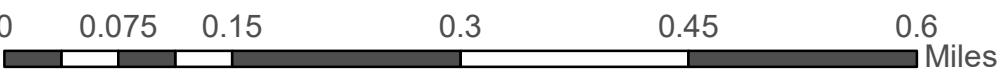
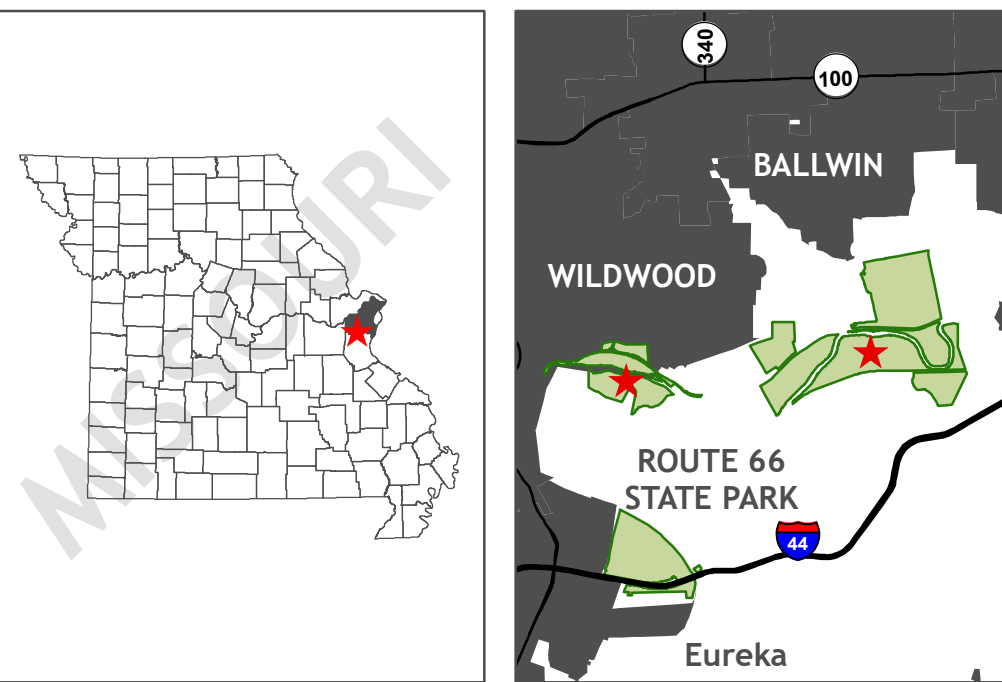


# CASTLEWOOD STATE PARK

Projected Coordinate System:  
NAD 1983, UTM Zone 15N  
Contour Interval: 100 Feet  
Absolute Scale: 1:8,000

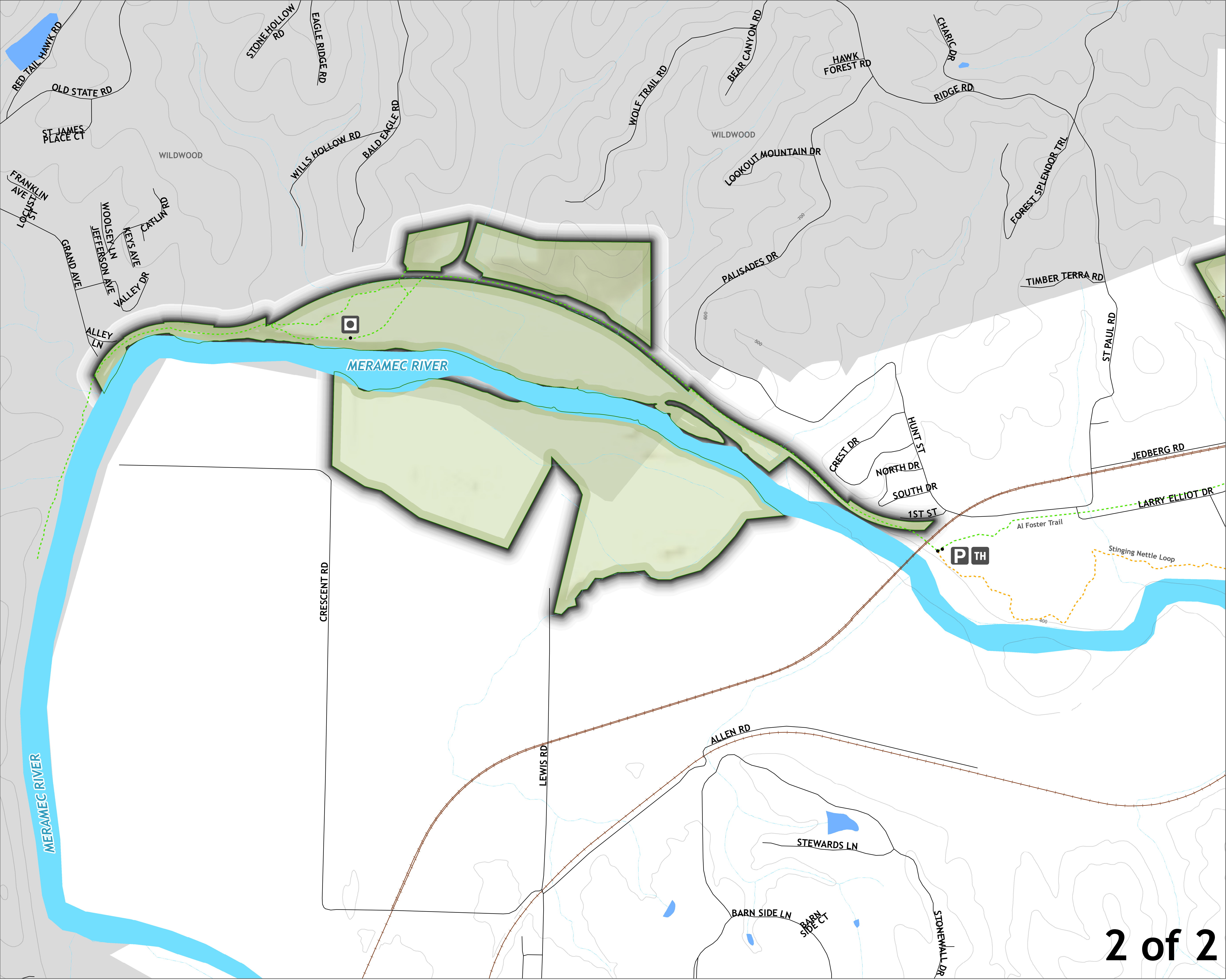


Features	Use Areas	Other
Cultural Feature	Day Use Area	Castlewood State Park
Drinking Water	Equestrian Use Area	Municipal Land
Interpretive Panel	Service Area	Road
Natural Feature	<b>Trails</b>	Railroad
Overlook	Al Foster Trail	Contours
Park Entrance	Castlewood Loop Trail	Structure
Park Office	Cedar Bluff Loop	
Parking	Chubb Trail	
Picnic	Gropeter Trail	
Picnic Shelter	Lone Wolf Trail	
Playground	Riverscene Trail	
Restroom	Stinging Nettle Loop	
Trailhead	White Connector	
World Bird Sanctuary	<b>Water</b>	
	River	
	Stream	
	Spring	
	Waterbody	



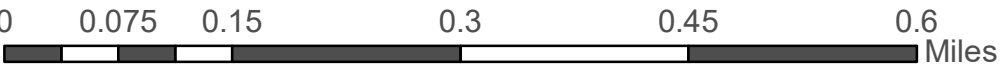
Although the data in this data set have been compiled by the Missouri Department of Natural Resources, no warranty, expressed or implied, is made by the Department as to the accuracy of the data and related materials. The act of distribution shall not constitute any such warranty, and no responsibility is assumed by the Department in the use of these data or related materials.



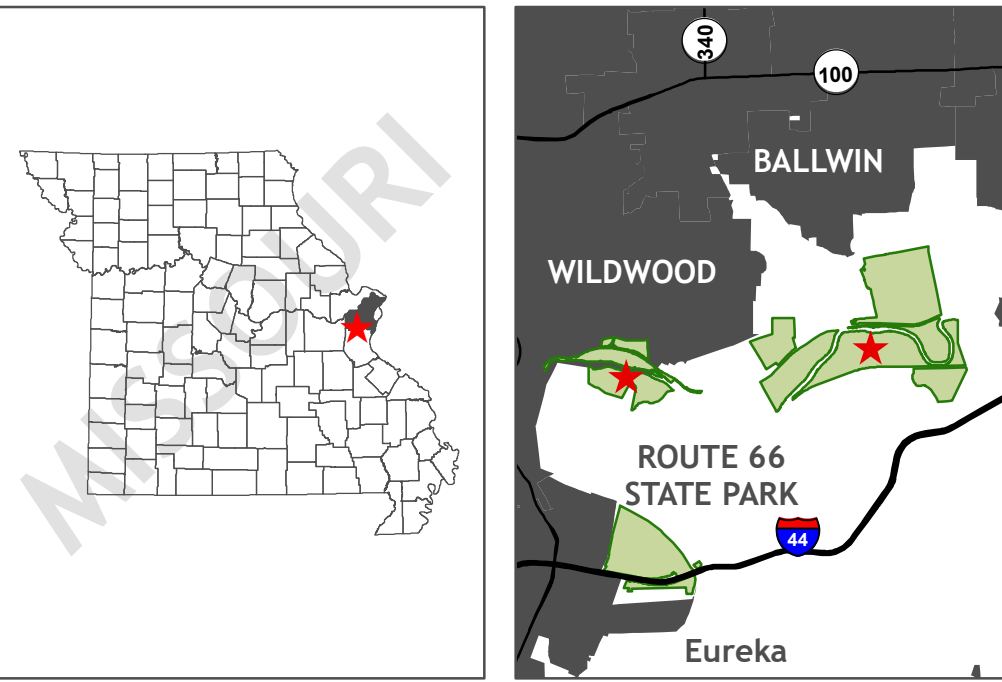


# CASTLEWOOD STATE PARK

Projected Coordinate System:  
NAD 1983, UTM Zone 15N  
Contour Interval: 100 Feet  
Absolute Scale: 1:8,000



Features	Use Areas	Other
Cultural Feature	Day Use Area	Castlewood State Park
Drinking Water	Equestrian Use Area	Municipal Land
Interpretive Panel	Service Area	Road
Natural Feature	<b>Trails</b>	Railroad
Overlook	Al Foster Trail	Contours
Park Entrance	Castlewood Loop Trail	Structure
Park Office	Cedar Bluff Loop	
Parking	Chubb Trail	
Picnic	Gropeter Trail	
Picnic Shelter	Lone Wolf Trail	
Playground	Riverscene Trail	
Restroom	Stinging Nettle Loop	
Trailhead	White Connector	
World Bird Sanctuary	<b>Water</b>	
	River	
	Stream	
	Spring	
	Waterbody	



Although the data in this data set have been compiled by the Missouri Department of Natural Resources, no warranty, expressed or implied, is made by the Department as to the accuracy of the data and related materials. The act of distribution shall not constitute any such warranty, and no responsibility is assumed by the Department in the use of these data or related materials.