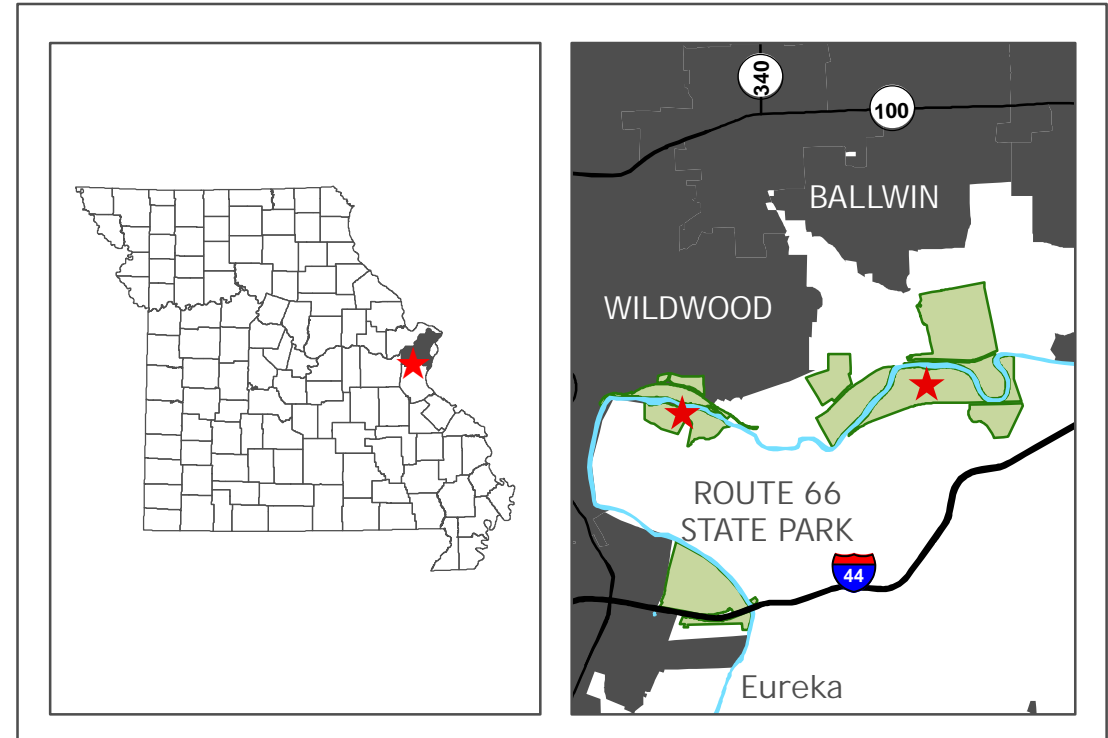


CASTLEWOOD STATE PARK

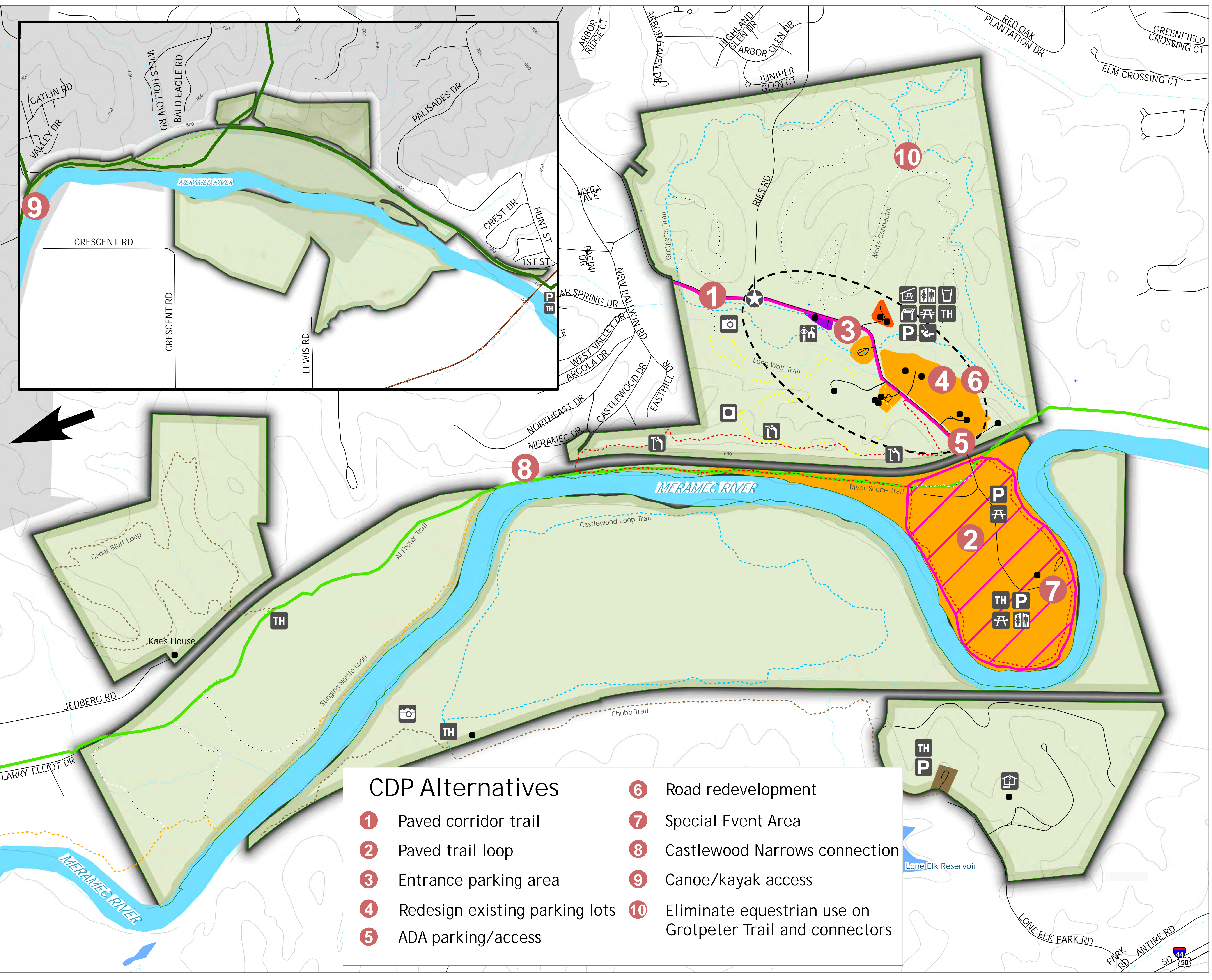
Projected Coordinate System:
NAD 1983, UTM Zone 15N
Contour Interval: 100 Feet
Absolute Scale: 1:8,000



Features	Use Areas	Other
Cultural Feature	Day Use Area	Castlewood State Park
Drinking Water	Equestrian Use Area	Municipal Land
Interpretive Panel	Service Area	Road
Natural Feature	Visitor Center Area	Railroad
Overlook	Trails	Contours
Park Entrance	Al Foster Trail	Structure
Park Office	Castlewood Loop Trail	Water
Parking	Cedar Bluff Loop Trail	River
Picnic	Chubb Trail	Stream
Picnic Shelter	Grotpeter Trail	Spring
Playground	Lone Wolf Trail	Waterbody
Restroom	Riverscene Trail	Road redevelopment area
Trailhead	Stinging Nettle Loop	
World Bird Sanctuary	White Connector	
	Greenway Trail	
	Future	
	Existing	
	Paved Trail	
	Paved Trail Loop	



Although the data in this data set have been compiled by the Missouri Department of Natural Resources, no warranty, expressed or implied, is made by the Department as to the accuracy of the data and related materials. The act of distribution shall not constitute any such warranty, and no responsibility is assumed by the Department in the use of these data or related materials.



CDP Alternatives	
1 Paved corridor trail	6 Road redevelopment
2 Paved trail loop	7 Special Event Area
3 Entrance parking area	8 Castlewood Narrows connection
4 Redesign existing parking lots	9 Canoe/kayak access
5 ADA parking/access	10 Eliminate equestrian use on Grotpeter Trail and connectors