

# Montauk State Park

BY THE NUMBERS

**LOCATION:** Dent County

**NUMBER OF ACRES:** 2,920.12

**NUMBER OF FULL-TIME STAFF:** 11

**NUMBER OF PART-TIME STAFF:** 3

**VOLUNTEER HOURS:**\* 8,838

**STEWARDSHIP HOURS:** 559

**2023 ATTENDANCE:**\* 580,715

**MILES OF TRAIL:** 2.4

**NUMBER OF STRUCTURES:** 44

**MILES OF ROADWAYS:** 7.33

**NUMBER OF INDIVIDUAL TOURS GIVEN:**\* 4,910

**NUMBER OF PROGRAMS PRESENTED:**\* 88

**STATE SALES TAX PAID:**\* \*\* \$159,214.76

**LOCAL SALES TAX PAID:**\* \*\* \$84,788.93

**TOTAL SALES TAX:** \$244,003.69

BUDGET

**SMALL MAINTENANCE & REPAIR BUDGET:** \$47,550.00

**ANNUAL BUDGET:** \$808,866.00

**CAPITAL IMPROVEMENTS PROJECTS IN PROGRESS:**\* 2

CAMPING & LODGING

**NUMBER OF CAMPING NIGHTS SOLD:**\* 23,201

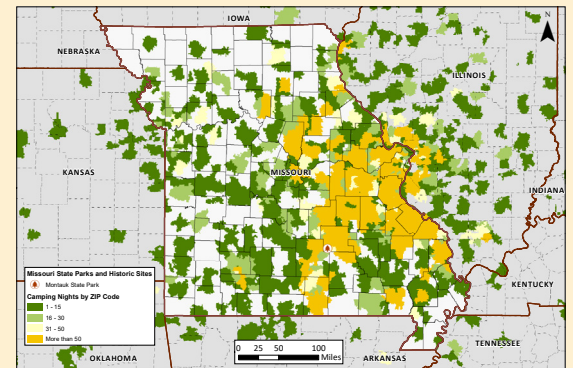
**NUMBER OF LODGING NIGHTS SOLD:**\* † 8,378

**NUMBER OF CAMPSITES:** 145

**NUMBER OF LODGING UNITS:**† 48

**NUMBER OF OVERNIGHT GUESTS:**\* † 68,254

**CAMPING NIGHTS SOLD BY ZIP CODE:** >>>>>>



SPECIAL EVENTS

**MISSOURI STATE PARK EVENTS:** 2

**SCHOOL GROUPS:** 4

PHOTO ALBUM



\* All numbers through December 2023. † Information includes park and concession-run operations. \*\* Estimated park and concession sales tax paid.