

# **BRYANT CREEK STATE PARK**

## ***PREAMBLE & MISSION STATEMENT***

**July 2021**

### **HISTORY AND SIGNIFICANCE:**

Located in southern Douglas County, Bryant Creek State Park spans rugged, steeply dissected river hills bordering the stream for which it is named. The native vegetation of mostly oak and oak-pine woodland envelopes tall dolomite cliffs, moss-draped sandstone outcrops, fern-lined glens, wet-weather waterfalls, springs and sinkholes. Visitors to the park will experience the magnificence of the Ozarks in the long ridgetop views across deep forest hollows, and the crystal waters of Bryant Creek.

The property for Bryant Creek State Park was purchased by the State of Missouri, acting on behalf of the public as Trustee for natural resources, in October, 2016. Natural resource damage funds, for the acquisition of the property, were the result of monetary damages recovered by the Missouri Department of Natural Resources (MoDNR).

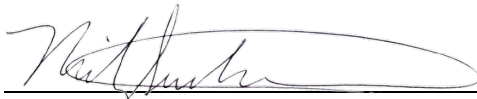
Through the Statewide Groundwater Restoration Plan, MoDNR seeks to implement restoration projects that directly benefit, restore and/or preserve groundwater resources through the acquisition and protection of groundwater recharge areas, including those containing direct conduits to groundwater such as those found in karst systems. Bryant Creek State Park is approximately 2,900 acres of forested watershed in southern Douglas County, containing the geology associated with the springs, losing streams and groundwater resources that flow directly into Bryant Creek. A primary focus of the park is to restore, rehabilitate and preserve the 3000-acre forested watershed for the benefit of surface and groundwater flow into the waters of Bryant Creek.

Bryant Creek is a scenic, high quality main tributary to the North Fork River, floatable for more than 40 miles and popular as a fishing stream. It is considered one of the best small river habitats in the White River Basin. Bryant Creek State Park features 1.67 miles of direct frontage on Bryant Creek, four major tributary hollows and at least four springs. Other features include caves, fens, sinkhole ponds and cliffs. The varied topography and complex geology yields a diverse range of natural communities and a suite of glade, woodland, forest and riparian ecosystems that support a strong and floristically diverse native plant community. The extensive forest cover, rich in species native to the southern Ozarks, provides significant wildlife habitat, especially to migratory birds.

**MISSION STATEMENT:**

The Mission of Bryant Creek State Park is to provide natural resource stewardship that preserves the high quality, mature pine-oak woodland and forest ecosystems; rehabilitates the recently-logged acres and restores the knob-top glades; benefits the surface and groundwater recharge areas of Bryant Creek; protects cultural elements; and provides nature-oriented outdoor recreation opportunities that will offer the opportunity to experience and appreciate the natural resources provided by the area.

**APPROVED BY:**



**Mike Sutherland**  
Division Director, Missouri State Parks

*7/16/21*

Date



**Terry Bruns**  
Program Director, Planning and Development

July 16, 2021

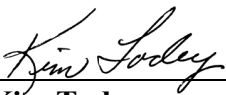
Date

*Laura L. Hendrickson*

**Laura Hendrickson**  
Director, Ozark Region

July 15, 2021

Date



**Kim Todey**  
Deputy Regional Director, Ozark Region

July 15, 2021

Date

*Carl Bonnell*

**Carl Bonnell**  
Park Superintendent

July 14, 2021

Date

# **BRYANT CREEK STATE PARK**

## ***CONCEPTUAL DEVELOPMENT PLAN***

**July 2021**

**Location:** Douglas County  
**Established:** October 2016  
**Size:** 2,917 Acres

### **INTRODUCTION**

Located in southern Douglas County, Bryant Creek State Park spans rugged, steeply dissected river hills of the Salem Plateau. The property is covered in natural forest that is rich in native plant communities of the southern Ozarks. Bryant Creek, a scenic and high quality main tributary to the North Fork River, flows alongside the northern park boundary with 1.67 miles of direct river frontage.

The State of Missouri purchased Bryant Creek State Park in October 2016. Possession of the property will provide preservation of high quality native pine-oak woodlands, forest ecosystems, and groundwater recharge areas; thereby improving a source of surface and groundwater into Bryant Creek. The property will also provide public access and compatible use as a Missouri State Park.

### **SITE GOALS**

- Restore and preserve the natural and cultural resources located within the park's boundaries;
- Provide recreational opportunities and public use facilities compatible with the park's mission, resources, and public needs;
- Provide adequate orientation and interpretive facilities to enhance visitor experience;
- Provide administrative support facilities to ensure successful operation and maintenance of the park.

### **DEVELOPMENT OBJECTIVES**

Bryant Creek State Park is separated into two sections by Highway N; the northern section where approximately 1,478 acres of mature forest and riparian corridor is to be preserved; and the southern section where approximately 1,439 acres of regenerating forest and glade is to be restored. To best support preservation and restoration efforts, development should remain minimal in nature, establishing a limited-development trails-oriented park.

#### **Access**

Bryant Creek State Park can be accessed via Highway N from the west or east.

## **Day Use Areas**

North Day Use Area: A DUA will be developed in the pine grove north of Highway N and south of the Simpson house. County Road N-337D will enable access to the area. Potential area amenities include, but are not limited to: parking, picnic tables, vault toilet, potable water, and informational/interpretive kiosks.

South Day Use Area: A DUA will be developed south of Highway N towards the eastern portion of the park. If appropriate, access will follow a preexisting logging road to the area. Potential area amenities include, but are not limited to: equestrian parking, equestrian hitching posts and waste bin, picnic tables, vault toilet, potable water, and informational/interpretive kiosks.

## **Camping**

Camping Area: A camping area will be developed amongst the pasture and pine grove north of Highway N and east of the Simpson house. Access will stem off of County Road N-337D, north of the DUA. Potential amenities include, but are not limited to: primitive camp sites with fire rings and picnic tables, vault toilet, potable water, and platform tent sites.

## **Trailheads**

Primary trailheads will be located in the North and South Day Use Areas. A secondary trailhead will be located near the Camping Area.

## **Trails**

Hiking Only Trails: Hiking only trails will be developed north of Highway N and east of County Road N-337D with at least 1 connector trail. Designated backpack camp sites will be established along the trail, excluding areas near Coon Den Bluff.

Multi-Use Trails: A system of shared multi-use trails (hiking, biking, and equestrian) will be established south of Highway N along with a section north of Highway N and west of County Road N-337D.

ADA Leisure Trail: A paved ADA leisure trail loop will be developed in the North Day Use Area.

## **Service Area**

Simpson House: The Simpson house located north of Highway N and east of County Road N-337D has no cultural significance. The house will be maintained for educational/research use.

Barn: The barn located north of Highway N and east of County Road N-337D has no cultural significance. The barn will be maintained for equipment storage.

### **Special Considerations**

Wild Area: The area north of Highway N and east of the camping and DUA has resource characteristics potential for a wild area designation.

Through-Trail: Potential for an equestrian through-trail exists, connecting Assumption Abbey and Rockbridge Rainbow Trout & Game Ranch, INC.

## **PROJECT PHASING**

- Phase 1
  - North day use area initial development
    - Parking
    - Vault toilet
    - ADA leisure trail footprint
  - Hiking only trail development
- Phase 2
  - South day use area
  - Multi-use trails
  - Hiking only trail network expansion
- Phase 3
  - Camping area
  - North day use area parking expansion
  - Paved ADA leisure trail
  - Trailheads

Cultural and natural resource clearances will be required before on-site modifications and development occur.

## **PLANNING AND RESEARCH GOALS**

- Complete the park's General Management Plan
- Continued research and exploration of the site

## **ACQUISITION UNITS**

If offered, acquisition of adjacent property may be pursued only through willing sellers or donors. To be considered, units should enhance the mission of Missouri State Parks through one of the following categories:

- Resource preservation and protection
- Recreational access and opportunity
- Management facilitation

## **CONTEXTUAL PLANNING INFORMATION**

### **Public Input**

Public input is an integral part of the conceptual development planning process. The following includes public meetings and input opportunities held for Bryant Creek State Park:

1. June 11, 2019: CDP Public Meeting #1 in Ava, Missouri at the Community Center.
  - a. Public input received during the public meeting.
2. January 16, 2020: CDP Public Meeting #2 in Ava, Missouri at the Community Center.
  - a. January 16, 2020 to February 15, 2020: Public input received online for development alternatives.
3. September 28, 2021: CDP Public Meeting #3 held in conjunction with Annual Public Meeting, in Ava, Missouri at the Community Center

### **CDP Team Members**

- Laura Hendrickson – Director, Ozark Region
- Kim Todey – Deputy Regional Director, Ozark Region
- Carl Bonnell – Park Superintendent
- Ken McCarty – Natural Resource Management Program Director
- Chris Crabtree – Natural Resource Steward
- Michael Ohnersorgen – Cultural Resource Management Program Director
- Kim Dillion – Cultural Resource Management Section Chief
- Amanda Pesce – Archaeologist
- Ben Nagy – Trails Coordinator
- Terry Bruns – Planning and Development Program Director
- Don Stier – Design Section Chief
- Ryan Dunwoody – Planning Section Chief
- Zane Price – Real Estate Manager
- David Kelly – Deputy Division Director
- Brian Stith – Deputy Division Director
- Mike Sutherland – Division Director

### **APPENDIX**

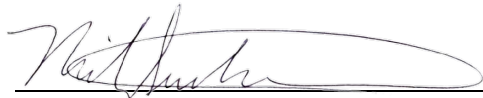
- CDP Map
- Public Meeting #1 Survey Results
- Public Meeting #2 Survey Results

**BRYANT CREEK  
STATE PARK**

**CONCEPTUAL DEVELOPMENT PLAN**

**July 2021**

**APPROVED BY:**



**Mike Sutherland**  
Division Director, Missouri State Parks

7/16/21

Date



**Terry Bruns**  
Program Director, Planning and Development

July 16, 2021

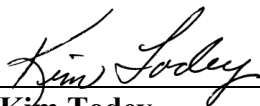
Date



**Laura Hendrickson**  
Director, Ozark Region

July 15, 2021

Date



**Kim Todey**  
Deputy Regional Director, Ozark Region

July 15, 2021

Date



**Carl Bonnell**  
Park Superintendent

July 14, 2021

Date



# BRYANT CREEK STATE PARK

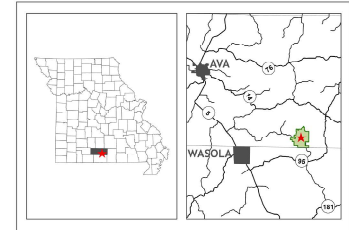
Projected Coordinate System:  
NAD 1983, UTM Zone 15N  
Contour Interval: 20 Feet  
Absolute Scale: 1:10,500

CONCEPTUAL DEVELOPMENT PLAN

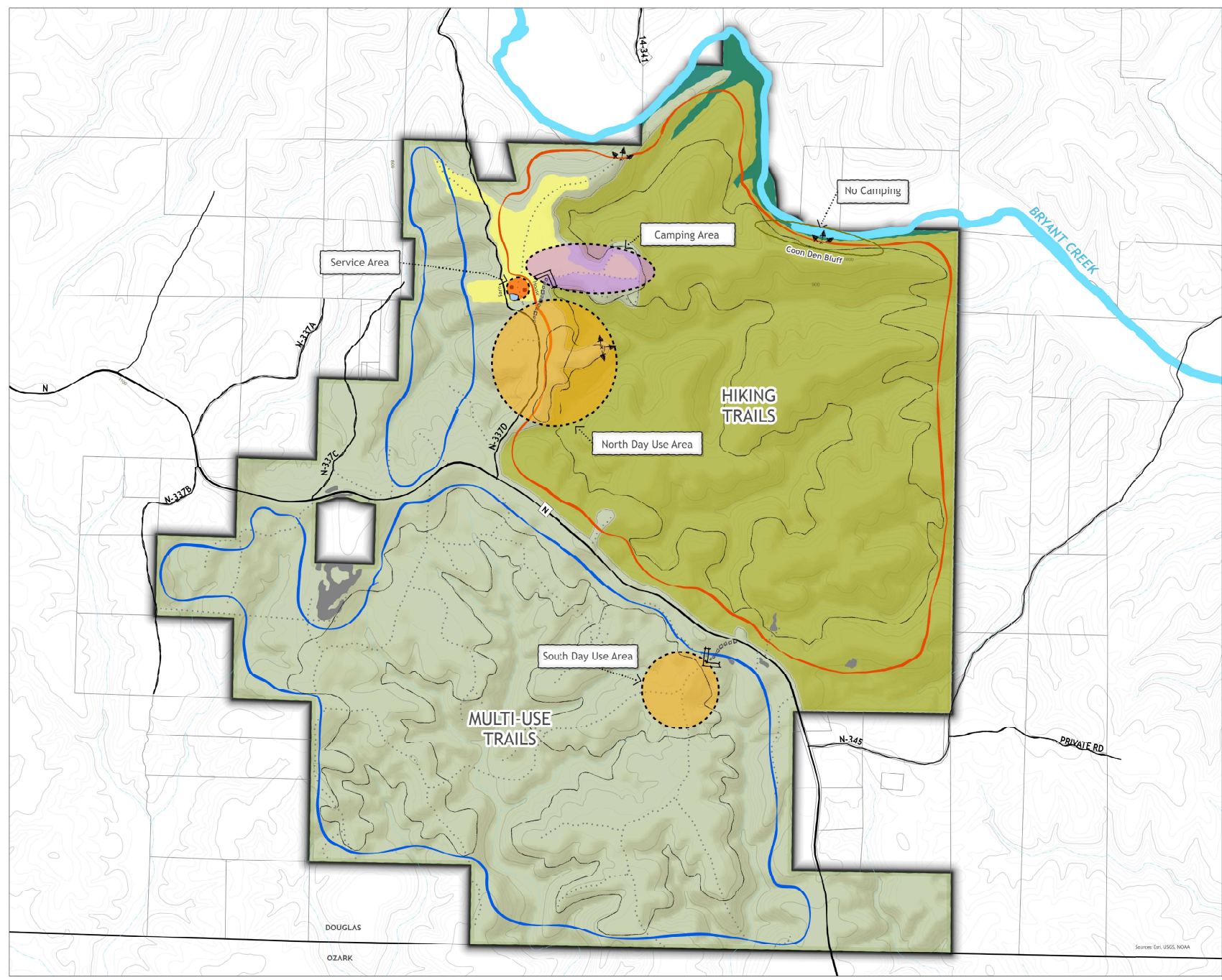


- |                         |                    |
|-------------------------|--------------------|
| Bryant Creek State Park | Parcel             |
| Day Use Area            | Proposed Trail     |
| Camping Area            | Multi-Use Trails   |
| Service Area            | Hiking Only Trails |
| Pasture                 | Route              |
| Glade                   | County Road        |
| Riparian Corridor       | Logging Road       |
| Proposed Wild Area      | Stream             |
| Bryant Creek            | Contour            |
| Pond                    | Structure          |
| County                  | Access             |
|                         | Scenic View        |

JULY 2021



Although the data in this data set have been compiled by the Missouri Department of Natural Resources, no warranty, expressed or implied, is made by the Department as to the accuracy of the data and related materials. The act of distribution shall not constitute any such warranty, and no responsibility is assumed by the Department in the use of these data or related materials.



Sources: Esri, USGS, NOAA





**Bryant Creek State Park  
CDP Public Meeting #1 Comments  
2019**

**Comments/suggestions regarding Bryant Creek State Park:**

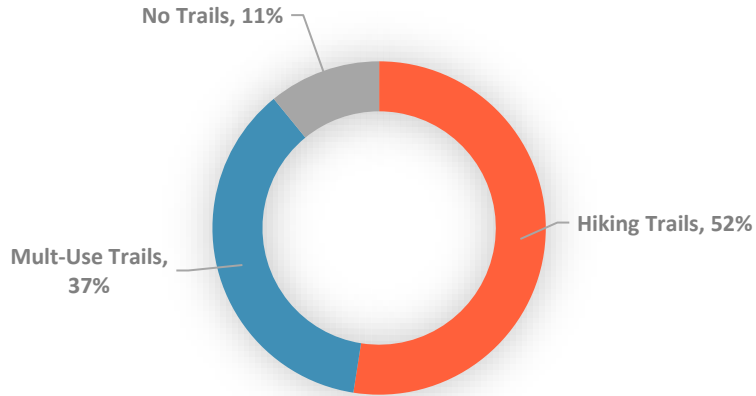
1. I love that the land is being stopped from ever being sold in small lots and houses all over. But HATE thinking the park will be developed with a large campground that might bring in a canoe rental there. Bryant Creek is the only creek left that isn't so crowded with paddlers; it's like being on an interstate highway. There's still solitude and nature feeling with few if any other people on it. That is because there's no canoe and kayak rental that puts boats on it. Would like the North side as designated wild area with trails.
2. I strongly would prefer no campground, no kayaking access, primitive pit toilet facilities only. Horse trails extremely limited to areas away from the creek and only on S. side with soil that can handle the trails. No ATV or mechanized access. The only development I would like to see on the park is a system of hiking trails. The house on the land would make a wonderful watershed protection education center. I would like to see at least the North side be given State Wild Area designation. Minimal development, maximum conservation, restoration, preservation as appropriate. Again, please, no kayak put ins on the land. Protect the water!!
3. I strongly support designating this park a State Park Wild Area – it is such a gem!
4. Please don't bring in commercial operations/concessions or motorized vehicle areas. Please keep it wild, small development, foot trails, no large campgrounds, visitor center.
5. Wild area north of Hwy N, hiking trails S. of Hwy N, minimal development. Comments given in Dec. mtg. – Restoration/protection. Excellent presentations.
6. Please try to limit development in the Bryant Creek State Park to hiking trails, parking and primitive camping sites. I'm excited by the prospect of regenerating the forested areas and the glade and preserving riparian landscapes.
7. My experience with horses on trails is that they are very destructive. Horses on a wet day, deep tracks, dry with deep holes – no one can walk on the trails anymore. Same with mountain bikes. If they are on the trails, it's difficult for hikers to use them. Maybe we need separate trails for horses, mountain bikes, and hikers.



8. I'm with the woman concerned about the loss of the wild spirit of Bryant Creek. I love being the only person in a kayak on Bryant Creek – rivers with outfitters have a different feel and flavor – Disneyland-ish.

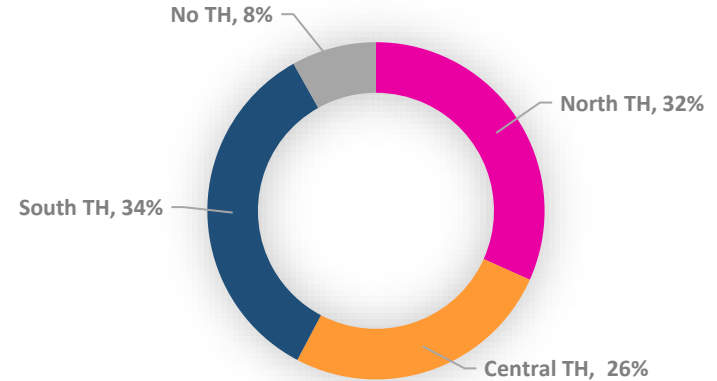


### Trails



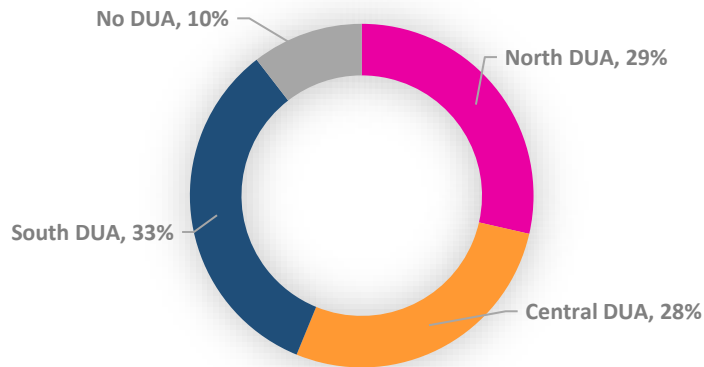
■ Hiking Trails ■ Mult-Use Trails ■ No Trails  
(Select up to 2 choices)

### Trailheads



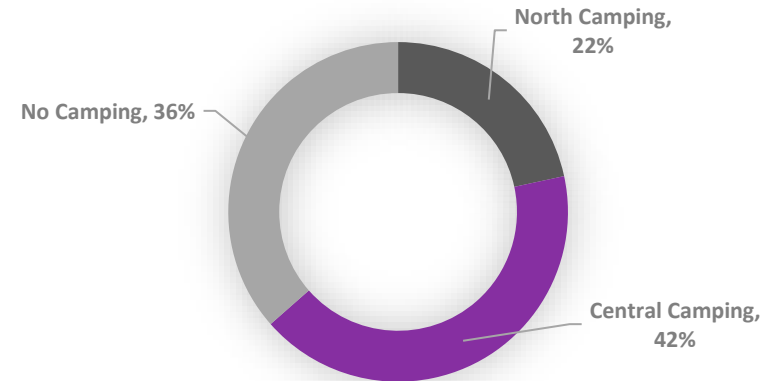
■ North TH ■ Central TH ■ South TH ■ No TH  
(Select up to 2 choices)

### Day Use Areas



■ North DUA ■ Central DUA ■ South DUA ■ No DUA  
(Select up to 2 choices)

### Primitive Camping Areas



■ North Camping ■ Central Camping ■ No Camping



**Comments/suggestions regarding Bryant Creek State Park:**

1. State park wild area designation on north side to preserve this beautiful and natural area; equestrian pass-thru trail (no staging area) on south side only.
2. South trail read to close to residential. Overall should be a good deal for the community.
3. Very concerned about camping areas that are not monitored. Have had homeless person's trash areas close to park. Drug use, drunken parties.
4. An equestrian pass-through trail only on south side – no bikes; Designate the north portion a MO Wild/Natural Area to preserve this wonderful minimally disturbed natural resource!
5. It would be good to include some equestrian camping in the multi-use area. A coral and primitive sites near the south trailhead. Backcountry camping for backpackers and sign-ins at the trailhead. Since the central proposed day use area has a limited development, and is in a pristine area, I'd like to see it stay as pristine as possible.
6. Please have minimal development. Please keep ATVs and trail riders (horses/mules) out. Please, no river access, boat ramp, etc.
7. I am excited to have this resource developed for the economics of Douglas County without endangering the DNA of our area. Can see very positive connections with existing Bryant Creek Conservation Areas, heritage festivals, Ava economics, etc.!
8. Keep up the good work, take advantage of AmeriCorps kids.
9. Make sure handicap areas and restroom, we have seniors that love to do day trips from our local Ava Place and nursing home. Have things that kids in groups can do during summer school.
10. Keep the water clean.
11. MO Fox Trotter Association – very interested in equestrian trail use.
12. Easy access for canoes and kayaks. Make incentives for (or at least make access to) recycling containers and trash collecting.
13. Please no RV hookups. Keep as primitive as possible.
14. We love the ideas of multi-use trails. I ride horses and although hikers, ATVs, etc. are not a problem, horses are terrified of mountain bikes. Bikes are silent and move fast and horses will freak out if they can't see or hear them



coming. Would love a pit toilet somewhere along the trail. My wish list would including turning the house into a nature center suitable for elementary school field trips.

15. Multi-use is good but, no motorized vehicles or bikes on the same trails. North and South trailheads would both be acceptable, but north side is my favorite. Central day use makes the most sense, north would be too hot!! It appears the north camping area would be too hot – looks open without forest coverage. Central camping area would be a better location for campers.
16. Horse trails with parking at the trailhead for horse trailers.
17. If there is camping areas you will have to patrol the area constantly because of unlawful (parties) activities.
18. Overall my preference is for the lowest level of development and ecological impact that is compatible with reasonable public use of the land. On the south side I would rather there not be horse trails, but if having them could somehow prevent worse users I could accept it.
19. No motorized vehicles. Hiking and horses only.
20. I am interested in using the multi-use trails for horseback riding. I am [REDACTED] of the Back Country Horsemen of Missouri (Ava Chapter). Perhaps we could make an arrangement to help build/maintain trails. Douglas Co. Fox Trotter trail riding club looks forward to using trails, Taney Co. Riders and Howell Co. Riders too!

21. Mostly just interested in horseback trails.
22. North area should be foot traffic only. South area developed for horse parking and trails. Park should be open ASAP to public.
23. Protect the resource first. Development should be in an affordable and sustainable progression with regard to available funding.
24. I like the idea of this park being developed primarily for hiking and limited primitive camping. If horseback riding seems desirable to horse enthusiasts, keep this activity in the south dry use area and make use of the old logging trails. A day use area near the camping area might be a start. If use of the park shows a need, then go to a second campground and day use area. I heard some discussion about forming volunteer groups to help with trail development and maintenance. I am sure the Ozarks Chapter of the Sierra Club will be happy to assist here.
25. Had the privilege of visiting this location. It will be an awesome addition to the state parks system.
26. I think it is a beautiful area and I'm looking forward to using it.
27. Is there enough to really draw a lot of people? Will it be maintained?



28. It seems multiple trailheads might be needed eventually. A smaller spot for backcountry users, a more centralized day-hiker trailhead, and a large southern trailhead to accommodate multi-use, including horse trailer parking. On question 3, I would have checked all.
29. Most interested in having equestrian trails in the park.
30. Can't wait for this park to be opened!
31. I would love to see more horse trails in this park and no motorized use of trails.
32. Adequate parking areas for users. This should include turnabouts for vehicles with trailers.
33. This would be a great location for hiking and horseback riding.
34. Please keep this natural resource pristine. The less human access and use the better. Please no camping, sadly will only bring booze and trash to the area, and most of all no [REDACTED] please. There are many camping mdc, state, and national in the area already available, let's do something different here and put the focus on habitat protection and restoration. I love the idea of protecting this land, I laude the idea of people misusing it as a result of unintended consequences. Keep people out or at least only allow very limited access. Also, will be important to make sure neighboring land owners don't see an increase in trespassers

that accidentally or purposely wander off park property to private property.

35. Missouri has a great reputation for building excellent facilities for outdoorsmen. It is exciting to see the planning for a new Bryant Creek State Park. Need to have a camp host to keep parties from taking over. Shade is important when and where possible. Also, access should be a factor. Which roads are best for accessing day use, trailheads, and camping areas? That should determine the development of areas. Remember us older and handicapped people. It would be nice to have at least one developed trail for those who have limited mobility. We plan on driving down to this area next week to see what we can see. Sorry that we were unable to come to either planning meeting, but we are excited about a state park on our favorite Bryant Creek.
36. Please keep north part of park natural wilderness area limiting usage and development. I know this part. I worked on it late 70s and early 80s doing TSL. It has not changed since then and I hope that it will stay as beautiful for my grandchildren and their grandchildren.
37. Make it usable for equine and hunting.
38. Access to Bryant Creek is not addressed in the survey.
39. The Bryant River is PRECIOUS and needs to be kept AS IS....  
No more people...



40. Current trails are not being maintained. Management is inept or resources are not available. The land would be better off if it was put back into private hands.
41. Don't cut corners in development. I float Bryant Creek frequently. It is a beautiful area and would like to keep as primitive as possible.
42. Boat launch and access to Bryant Creek.
43. This park is a treasure. Particularly when the practice of clear cutting threatens so much privately owned forest land in the area, this acreage is especially precious and begs for minimal development.
44. I am concerned that multi-use trails are not a good fit for the park, since there will be no state park staff on site to keep horses and mountain bikes outside the "hiking trail only" section of the park. Given the steep terrain in the north end of the park, near Bryant Creek, the trails there would see substantial erosion from horses and bikes.
45. I would really like to see opportunity for equestrian use in the southern multi-use area.
46. To continue to allow horseback riding on the existing trails as is and has been done for generations! To add more horseback trails helping to promote continual awareness to the public of our heritage and homesteading which started the development of this country almost exclusively with horses.
47. Please continue to allow horseback riding on the existing trails and add more trails. Please put in an overnight camping area for horseback riders with the usual amenities of outhouse, water hydrant, ties or preferred corrals for horses. Electric would be great if possible. Please help preserve our heritage with horse availability in this part of the state that has nothing in the state parks here now.
48. That a stage be built at the North Day Use Area for mountain music festival (such as Pioneer Festival of the Ozarks, [heritage417.com](http://heritage417.com)) and other outdoor activities for local musicians such as jam sessions. Music and picnics are a large part of the history of Douglas County. 5,000 person capacity. Activities to provide their own temporary bathroom facilities to support use of the stage. Natural turf parking to be size for 300-500 cars at first and a level location for 12 porta-potties. Include 200 Amp service for stage. Include parking expansion plans. Parking could occur on the flat areas west of 337D at both the farm house and 300 yards before arriving at the farm house pond (Central Day Use Area).
49. Thank you for the opportunity to submit comments on plans for the management of Bryant Creek State Park. The park is a wonderful addition to Missouri's park system. As a designated Outstanding State Resource Water, a section of Bryant Creek itself benefits from the added protection the north side of the park provides. As its site mission states, the park itself provides a valuable opportunity to restore and to preserve "high quality, mature pine-oak woodland and forest ecosystems; rejuvenating the pine forest and restoring the



knob-top glades: benefiting the surface and groundwater recharge areas of Bryant Creek.” We recommend that the park plan lay the groundwork for the park as a place that provides primitive or rustic recreational opportunities as a core principle to supplement the park’s site mission. Providing limited development through day use areas and primitive camping sites best complements that goal. Also, we recommend trails for hiking only in Bryant Creek Park. State parks provide a variety of multiple use trail options, but each park need not provide that full range. This is especially true for parks whose purpose includes mitigation of high-quality Missouri natural ecosystems. Hiking trails provide lower impact recreation. Monitoring and maintaining those trails will be easier for the limited staff available at the park. Highway N roughly divides the park. The forested area north of N is in a more pristine, unlogged state than the area south of N. Although we recommend against it, if the final plan for Bryant Creek park includes any multi-use trails, we suggest multi-use trails be located only south of N. That area of the park is somewhat less rugged and therefore less likely to be vulnerable to erosion and multiple-use trail siting difficulties. The option of a Central day use area and Central primitive camping site would provide the most convenient arrangement for park visitors north of N. We oppose the potential North day use or North camping site area. Combining both day-use and camping close together can reduce the enjoyment of primitive camping. The north area is characterized by open fields. It would thus also provide a less desirable camping site than the Central site which has pine groves and is semi-open. Also, the North site might invite future development which would be out of character

for the park’s mission. A Day use area south of N should be provided for the convenience of visitors and protection of the resource. The Missouri Sierra Club has 12000 members in Missouri. We greatly value our state's park system. We look forward to the opening of Bryant Creek State Park. Thank you for consideration of our comments.

50. I suggest we try to keep this park to hiking only, with a day use separate from the primitive camping area. I would also suggest we try to keep the more rugged north part as pristine as possible. Thank you for opening this new park, and for listening to citizens’ suggestions.
51. I support a State Park Wild Area designation on the park north of highway N. I recommend that the park plan focus on primitive or rustic recreational opportunities, with limited development and day use areas and primitive camping sites primarily south of highway N.
52. The department should consider development of a folk music center at this state park, similar to that in Mt View Arkansas. Initially this could involve fairly modest capital improvements (building a covered stage and simple seating, with basic facilities like restrooms, vending area, adequate parking). This park is already located close to private lodging at Rockbridge Resort. Using the state park as a folk music center would encourage economic development in Douglas County by increasing tourism and provide a unique experience in the state park system.





53. Multi-use trails would not include motorized vehicles or trail bikes, but horses could access using the pass through (only trail on the South side (between the monastery and Rock Bridge Trout Resort)

54. Allow hunting on south side

55. Sell

**Comments/suggestions regarding Missouri State Parks:**

1. Preserve our land and historic sites for generations to come.
2. Make sure trails have a decent buffer to residential areas esp. south trailhead and trails on the southern part of the northern area.
3. Please keep trails and camp sites away from private homes. South trailhead needs to move north.
4. Love how our state has placed such an emphasis on public lands (the people and parks) and preserving our natural resources and historical sites.
5. Where are the historic sites managed by the state parks? Are they listed on the website?
6. Keep up the generally good work.
7. Keep them up but don't take them away.
8. More items for seniors and kids to do at sites.

9. Keep maintaining state parks. Years ago there was no place to go for a picnic but in the cemetery.

10. Keep as pristine and natural as possible. Lots of trash containers. Procedures for horse manure mess (if allowed). Steep fines for people who leave litter, vandalize, etc. We love our Ozarks and I'm proud of this opportunity.

11. I've been to several, and enjoyed all of them.

12. On the combined options, I believe it would be best to have a large trailhead at the north site where there are already field. Horse riders could park their trailers there and then ride to the multi-use trails south of N Highway.

13. I commend DNR/Parks Division for moving forward with the Bryant Creek acquisition under a difficult political environment. Thank you.

14. I moved to MO from out of state. You people are doing a fantastic job. Help us maintain horseback riding trails. Thank you!

15. Public majority values parks. Want to see Eleven Point State Park development to proceed.

16. I also attended the Ozark Mountain meetings last year. Thanks for the question and answer opportunities at these meetings for our new parks.

17. I am proud of the good work that is happening.



18. They need to be preserved and maintained better.
19. I think MO State Parks generally provide a great “value for the dollar” in making natural areas available, with a few grandiose exceptions. I trust Bryant Creek will show maximum interface with nature and minimal construction/development. Thank you for your stewardship.
20. Sell
21. It is so important to protect our natural resources and watersheds. Please always keep conservation and restoration at the heart of your mission. The land will outlast us, and we want to leave it in the best condition we can.
22. Would love to see more horse trails offered in Missouri State Parks.
23. The Ava Area Chamber of Commerce collaborates with a tourism event called Discover the Ozarks. This is a week-long series of activities that feature “The Ozarks” and various people, places including historical happenings, buildings and sites. MDC involvement would be welcome. For more information contact [REDACTED]  
[REDACTED]
24. Thanks for all you do. Please protect this new site by making it a low use facility. No water access please.
25. Thank you for all that you do and have done. Keep up the good work
26. Fix the Tecumseh Park AS IT SHOULD BE and put more money into the Boat Ramp at Bridges Creek....
27. To continue to allow horseback riding with adequate access for trailers to park and overnight availability. There are literally no State Parks in this part of Missouri that have trails and overnight camping. Electric would be nice but an outhouse, gravel parking lot with horse ties preferably corrals and water would help continue this unique and special recreation.
28. Horseback riding with campgrounds is limited in much of Missouri and it would be great if there would be more added in trails and overnight availability. Electric sites with horse corrals a couple of water hydrants would be great as well as bathroom shower house if possible. This would help to preserve our heritage and the heritage of what Missouri is known for our famous horses. The Missouri Fox Trotters!
29. I support their maintenance and expansion with minimal development.