

Dr. Edmund A. Babler Memorial State Park



Public Meeting
9/30/2023

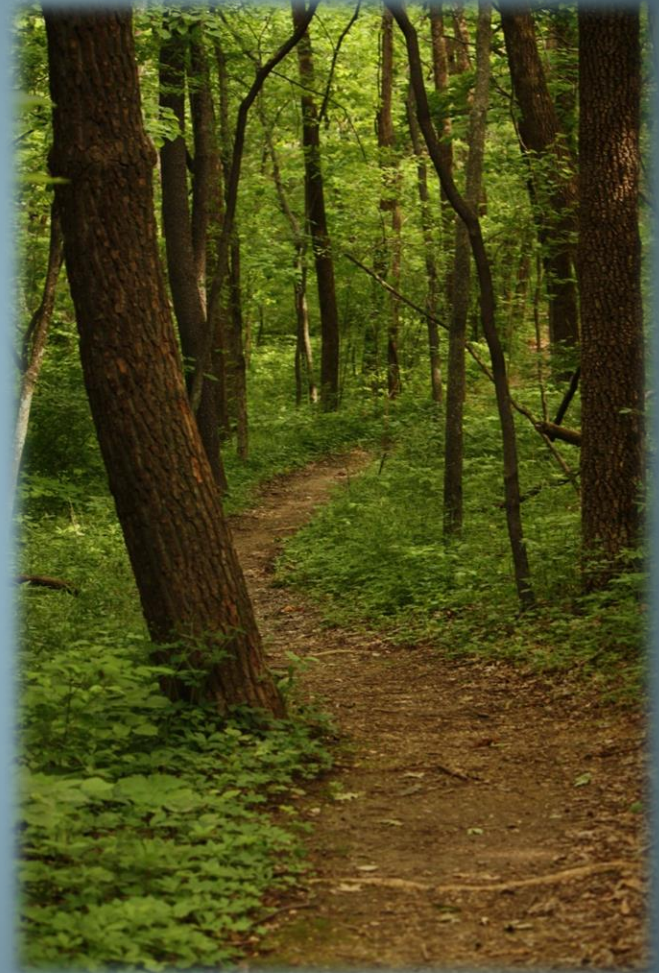
Missouri State Park Mission



- To preserve and interpret the finest examples of Missouri's natural landscapes;
- To preserve and interpret the finest examples of Missouri's cultural landmarks;
- To provide healthy and enjoyable outdoor recreation opportunities for all Missourians and visitors to Missouri

Park Mission Statement

- Preserve the parks mesic old growth forest
- Preserve the parks historic CCC/WPA resources
- Provide recreational opportunities consistent with the parks character



Missouri State Parks, Soils and Water Tax



- 1/10 of 1% sales tax
- Provides $\frac{3}{4}$ of all State Parks budget
- Renewed by voters every 10 years. Will be back on ballot in 2026



Babler Quick Facts

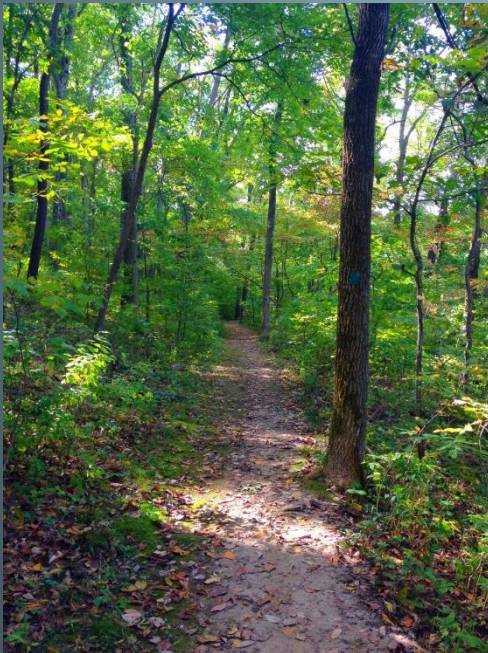
- Dedicated October 10, 1938
- 2441 acres of Ozark-border Missouri River Hills Landscape
- Average 425,000 park visitors each year (530,672 in 2022)
- Average 31,000 of overnight guests each year
- 7 Full-time, year round salary staff
- 5-10 seasonal workers



Significance of Dr. Edmund A. Babler Memorial State Park



The CCC



Native Missouri river hills landscape
and green space

A Small City Itself

- Successful operation of Babler State Park is much like the operation of a city. The park is responsible for:
- Water System
- Wastewater System
- Overnight Guests
- Daytime Guests
- Cooperative Partnerships
- Education/Interpretation
- Road Systems/Trail Systems
- Building/Facility Maintenance



Overnight Guests

The park offers overnight guests recreation:

- 75 campsites
- 30 person capacity special use area
- Jacob L. Babler Outdoor Education Center

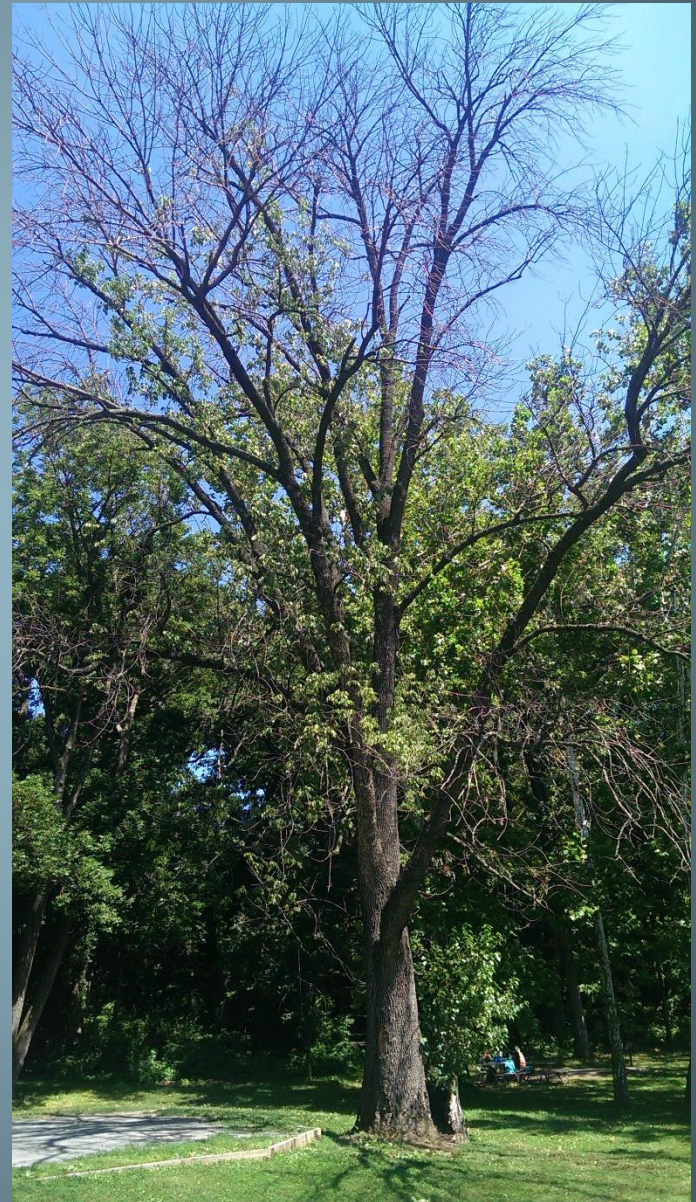
The park receives

- Over 30,000 campers/ year in campground & special use area
- 10,000 campers at the outdoor education center
- 11,739 camping nights sold-2022



2023 Challenges

- Working with an increase of park usage and camping.
- Removal of diseased tree (Emerald ash borer) especially in campground. Will continue into winter 23-24.
- Working on tree replanting plan



Facility Maintenance

- Park staff are responsible for maintenance, upkeep, and restoration of all park buildings and infrastructure.
 - Newer Construction
 - Includes the Visitor Center and Outdoor Education Center complex
 - Park's Historic District
 - 22 buildings dating from the 1930's
 - Constructed by the Civilian Conservation Corps and Works Project Administration



Daytime Guests

The park provides opportunities for outdoor recreation & picnicking:

- River Hills Visitor Center
- 17 miles of trails for hiking and equestrian use
- 3 picnic shelters and 1 enclosed shelter
- Numerous picnic sites throughout park



Visitor Center Operations and Resale Area

- Focal point for information about the park
 - Maps
 - Reservations

- Resale of park focused merchandise



Interpretative Programs & Outreach

- Interpretive staff provide programs year round for a variety of groups:
 - Campers
 - Visitors
 - Youth Groups
 - Schools
- Babler Outdoor Adventures Program
- Outreach events



Visitor Center Exhibits

-Added new animal enclosures and improved layout



-Working on Aquatic tank filtration upgrades



Natural Resource Opportunities

- Managed Deer Hunt 11/3/23-11/5/23
- Stewardship Initiatives-prescribed burn, invasive species removal
- Volunteer opportunities



Unique Cooperative Partnerships

Babler State Park has partnered with the Rockwood School District in the operation of:

- Jacob L. Babler Outdoor Education Center
 - Staffing and operation by Parkway-Rockwood Community Education
 - School year used for school camps
 - Summer and weekends used by groups such as scouts and organizational camps and retreats
- Historic Riding Stables/The Outpost
 - Babler Wild Summer Camp ran by Parkway-Rockwood Community Education



Missouri State Park Rangers



Project Updates

- New electric golf cart for campground operations
- Thumb attachment for parks backhoe



Project Updates

- New Park pickup truck
- Replacing 2004 pickup truck
- Will help transport crew around park to meet our operation goals.



Project Updates

-OEC Cabin HVAC replacement with addition of air conditioning



Project Updates

- Capitol Improvement Projects
 - Resurfacing of Paved Trail (along with an RTP Grant)



Project Update

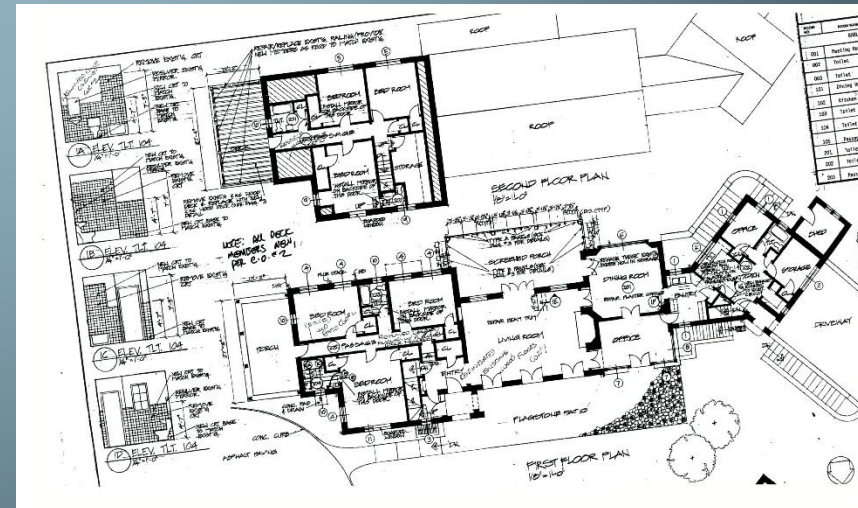
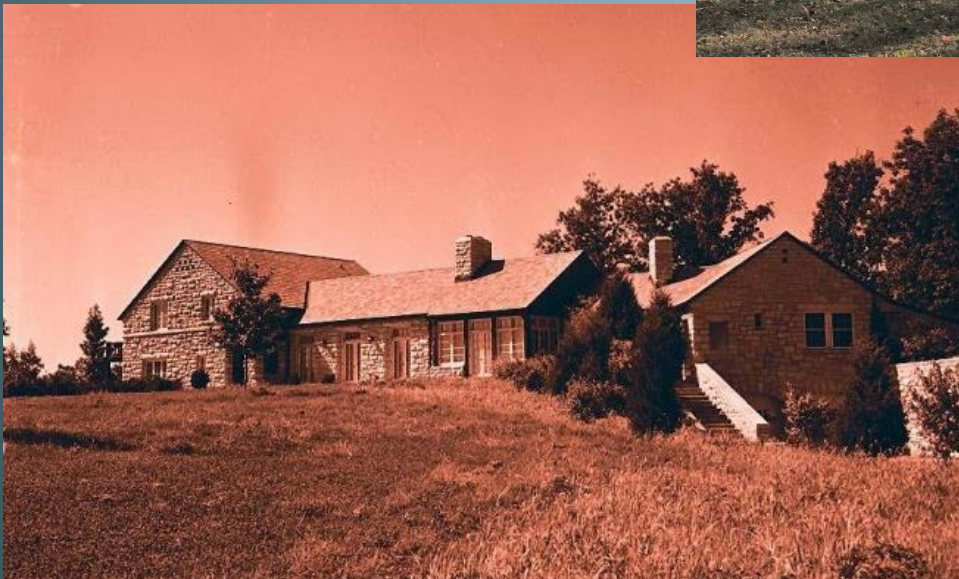
Revenue Bonds

- Campground Improvements



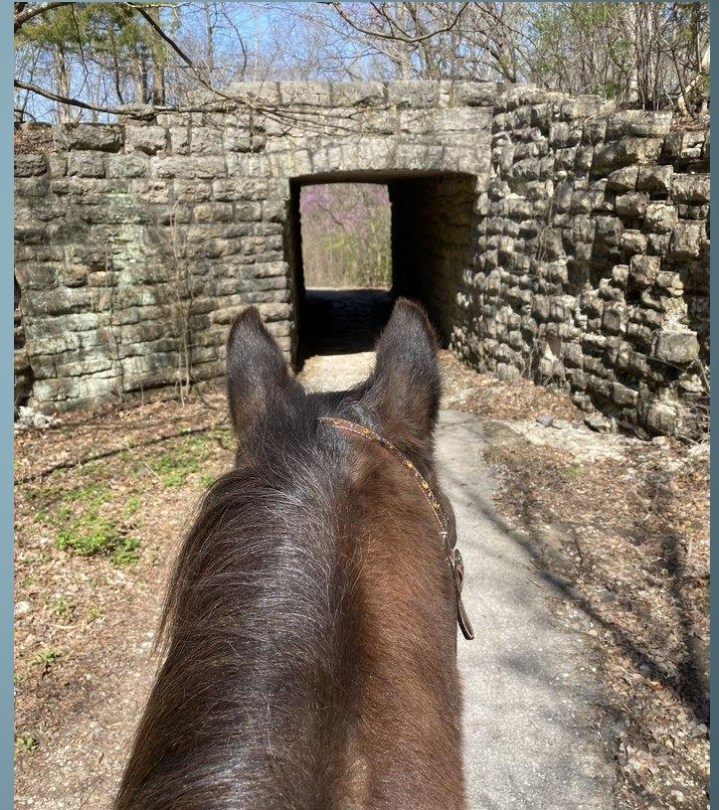
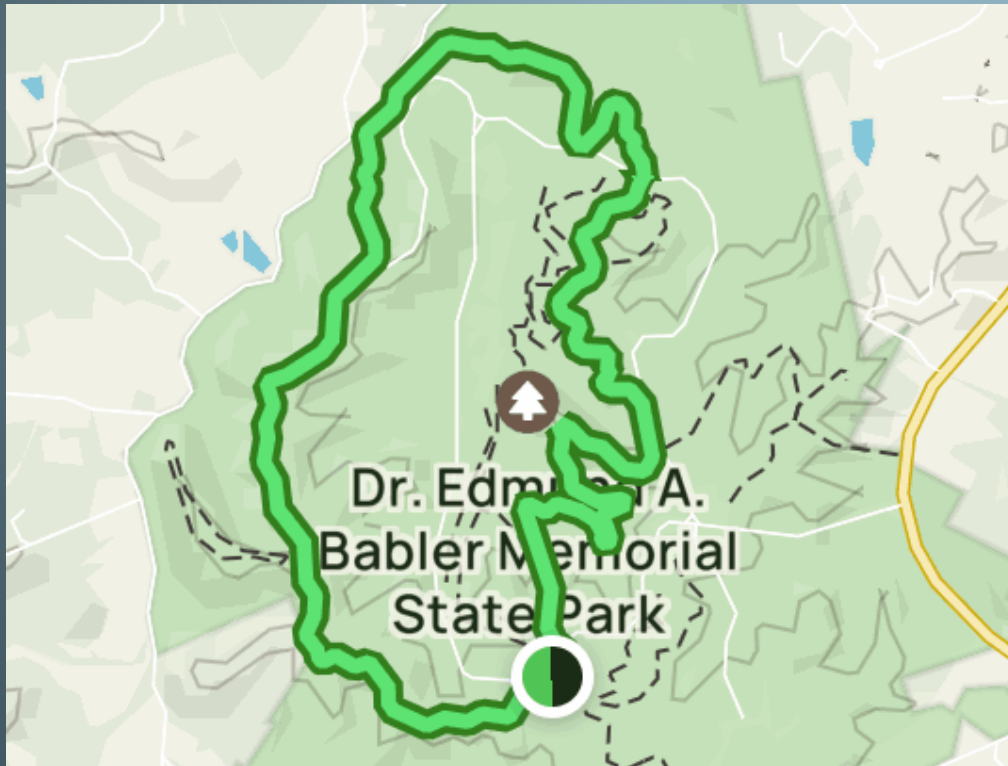
Project Update Revenue Bonds

- Babler Lodge Project



Project Updates

- Moving of Equestrian parking Lot and Trailhead



On the Horizon Projects

- Old pool complex removal and redevelopment of area.
- Proposed mountain bike trail



On the Horizon Projects

- New Playground at Guy Park Trailhead



Rock N' Raft

Quick 'L' Tube Slide

Store Front

Square Peak Roof w/ Timber Decor

Rung Enclosure w/ Solid Steering Wheel

Animal Trackers (Southwest)

Single Gizmo Panel w/ Answer Wheel

Rung Enclosure w/ ThunderRing

Square Peak Roof w/ Timber Decor

Sky-Hi Tube Slide

Square Peak Roof w/ Timber Decor

Contier Link

Coral Climber (3D)

Single WilderSlide II

Vert Wall Climber

Zip Slide

Questions?

