

United States Department of the Interior
National Park ServiceNational Register of Historic Places
Inventory—Nomination Form

For NPS use only

received FEB 26 1987

date entered

See instructions in *How to Complete National Register Forms*

Type all entries—complete applicable sections

1. Name

historic The Ira C. and Charles S. Van Noy Residences

and/or common

2. Location

street & number 6700 and 6800 Elmwood

___ not for publication

city, town Kansas City

___ vicinity of

state Missouri

code 029

county

Jackson

code 095

3. Classification

Category	Ownership	Status	Present Use
___ district	___ public	<input checked="" type="checkbox"/> occupied	___ agriculture
<input checked="" type="checkbox"/> building(s)	<input checked="" type="checkbox"/> private	___ unoccupied	___ commercial
___ structure	___ both	___ work in progress	___ educational
___ site	Public Acquisition	Accessible	___ entertainment
___ object	___ in process	<input checked="" type="checkbox"/> yes: restricted	___ government
	___ being considered	___ yes: unrestricted	___ industrial
	<input checked="" type="checkbox"/> N/A	___ no	___ military
			___ other:

4. Owner of Property

name Claudia Forster Woods, 6800 Elmwood
Mr. and Mrs. Elbert Harris, 6700 Elmwood.

street & number

city, town Kansas City

___ vicinity of

state Missouri 64132

5. Location of Legal Description

courthouse, registry of deeds, etc. Office of the Recorder of Deeds
Jackson County Courthouse, Kansas City Annex

street & number 415 East 12th Street

city, town Kansas City

state Missouri 64106

6. Representation in Existing Surveys

title Missouri State Historical Survey has this property been determined eligible? ___ yes ☒ no

date 1985

___ federal ☒ state ___ county ___ localdepository for survey records Department of Natural Resources
Historic Preservation Program

P. O. Box 176

city, town Jefferson City

state Missouri 65102

7. Description

Condition

☒ excellent
☒ good
☐ fair

☐ deteriorated
☐ ruins
☐ unexposed

Check one

☐ unaltered
☒ altered

Check one

☒ original site
☐ moved date _____

Describe the present and original (if known) physical appearance

6700 Elmwood

Reflecting Tudor-style architecture, the Ira C. Van Noy residence, built in 1909, is located at 6700 Elmwood in southeastern Kansas City, Missouri. The three-story structure, rectangular in plan, measures approximately 50 feet by 60 feet and cost \$25,000 to build. The structure and a carriage house are sited on 14 acres of land, which includes a four acre pond.

EXTERIOR

Construction and Materials

The residence is constructed of wood, stone and concrete.² All exterior walls are of stucco, half-timber and stone. Prominent chimneys at the east and west elevations are of stone. Stained art glass and leaded art glass adorn exterior façades as well as large, wooden cornice brackets. Ovolo molded imposts, jardinières and decorative light fixtures are included throughout the exterior elevations.

Roof

The gabled, wood shingle roof is crested with terra-cotta tile. Shed dormers (north and west roof slopes) and wide eaves are other notable features.

North (main) Façade

The main façade of the Ira C. Van Noy residence faces north. This elevation consists of a low, gabled roof porch supported by coarsed stone piers with half-timbering in the center bay surface. At the second floor level, two bays, each fenestrated with three double hung sash windows, nine-over-one lights, flank the central bay. The second floor elements terminate in gabled roofs with wide eaves and feature half-timbering and large wooden brackets. A shed dormer, fenestrated with three rectangular windows (each six-over-one lights) at the center bay marks the third story. The main entryway consists of a large, oak-framed, art nouveau-styled leaded decorative glass door with side lights, flanked by a pair of art glass light fixtures. Two pairs one-over-one double hung sash-type windows with stone lintels and sills flank the main entrance. The main entrance is approached by seven stone steps, flanked by two pairs of jardinières.

West Elevation

A flat-roofed, porte cochère is located at the west elevation. Basement windows are single pane sash-type with stone sills and lintels. First floor fenestration, one-over-one double hung sash windows, framed by stone sills and lintels, is the same throughout each bay with the exception of two single paned stained glass windows. Second floor fenestration (nine-over-one lights, double hung sash), is consistent throughout each bay. The third floor gable is fenestrated by two pairs of double hung sash windows, nine-over-one lights. A shed dormer with a pair of double hung sash windows, six-over-one lights, is located at the roof's southwestern slope.

South Elevation

The south elevation of stucco and half-timber, consists of two first floor entryways, a cellar entrance, an enclosed second story porch with multi-

United States Department of the Interior
National Park ServiceNational Register of Historic Places
Inventory—Nomination Form

For NPS use only
received
date entered

The Ira C. and Charles S.

Continuation sheet Van Noy Residences

Item number 7

Page 1

paned casement windows and three single-paned, stained art glass windows at the second floor level. The third story, a half-timbered gabled wall surface is fenestrated with two pairs of nine-over-one lights, double hung sash windows. Located at the southeast corner is a second story, open sun porch. Two multi-paned double hung sash windows are also located at the southeast corner. Two pairs of multi-paned basement windows flank the east-end entryway.

East Elevation

A first-story, screened-in porch and enclosed sleeping porch with multi-paned casement windows, each framed by paired wooden piers, are located at the east elevation. Two single-paned, stained glass windows, framed by stone sills and lintels, first story level, are located on the northeast end. At the south end of the east façade, first story, are three multi-paned double hung sash windows. At the second-story level, to the west end of the sun porch, are two single-paned stained glass windows which flank a door. Third floor gables each contain two pairs of double hung sash windows, nine-over-one lights. Connecting the screened-in porch to the porch of the main façade is a semi-circular, open veranda.

INTERIOR

The original interior decor is extant and in excellent condition. Woodwork, including crown molding, skirting boards, beamed ceilings, doorways with wide lintels, and decorative beaded and egg and dart molding, is, except where noted, polished oak. Decorative beveled glass, stained glass, hand-painted ceramic tile remain, too, in excellent condition.

Main Entrance and Foyer

A double entrance hall with copper plate over zinc³ decorative beveled glass doors and side lights lead to the foyer. Door frames are of oak and floor is ceramic tile. A diamond-shaped oak beamed ceiling is located in the foyer as well as a brass and etched-glass art nouveau luminaire.

Great Hall

The great hall is reached through a pair of fluted, doric columns resting on monumental plinths. A diamond-shaped, beamed ceiling is framed by massive oak, tudor-style arches which are flanked by pairs of fluted, doric pilasters. A wainscoted staircase with turned supports and handrails leads to the music landing. On the newel post at the foot of the staircase is a metal, art nouveau luminaire with the inscription "Sourire d'Avril par Flore" at its base. Also located at the eastern end of the great hall is a jade-colored, terra-cotta tiled fireplace, with a large keystone and a pair of "crowned lion" tiles on either end. A pair of brass sconces decorate the mantel wall.

Side Porch

Directly to the east of the great hall is the side porch, entered by a double door.

United States Department of the Interior
National Park Service

National Register of Historic Places
Inventory—Nomination Form

For NPS use only
received
date entered

Continuation sheet The Ira C. and Charles S.
Van Nov Residences

Item number 7

Page 2

Study

A wood-paneled, double door with leaded, art nouveau beveled glass panes leads to the study. Located at the east wall of the study are three double hung sash, multi-paned bay windows. Two large double hung sash windows and a rear door are located at the south end.

Breakfast Room

Notably different in decor than the remainder of the interior is the breakfast room with its heavy paneling, oriental-styled wallpaper and light fixture. Triple windows, one-over-one light, face the south. The breakfast room is reached either by a leaded, beveled glass door off the study or through the kitchen.

Main Dining Area

Reached via the kitchen or through a double pocket door with leaded, beveled glass panes (off the great hall) is the main dining area. On the north wall, built-in cabinets and drawers with a central paneled back are flanked by a pair of built-in shelves with leaded glass doors. The paneled portion of the central built-in is decorated by a pair of cartouche-like grape and floral designs in the upper end panels, and in the lower panels, with a carved, ripple design. Most unusual is the green wallpaper which appears to be heavily layered and of a high rag content. A light fixture, centrally located, is patterned in a floral design. Echoing the design of the cartouches of the paneled wall surface is a pair of mirrored-image, recessed stained glass windows with grape and bird motifs.

Library

East of the foyer is the library, reached by a double pocket door off the foyer entrance or by an entrance off the great hall. A fireplace decorated with cream-colored, terra-cotta tile, embellished with hand-painted art nouveau roses, is framed by built-in bookcases with tulip-patterned leaded glass, also of art nouveau styling. Above each bookcase are stained glass windows, both patterned with similar art nouveau elements and both containing literary quotes. A wide, paneled wall of oak is located above the mantel.

Parlor

To the west of the main foyer is a side parlor. A pink tiled fireplace with a light, colored wood mantel is located in this area. Woodwork has been stained a cream color.

Music Landing

Undoubtedly the most spectacular and unusual room of this structure is the music landing, reached by the main stairway just off the great hall. Facing the south is a series of three stained glass windows. The central, single paned window is of a muse-like figure, playing the violin. Most unusual in its conception, the muse-like figure is styled to appear three-

United States Department of the Interior
National Park ServiceNational Register of Historic Places
Inventory—Nomination Form

For NPS use only

received

date entered

Continuation sheet The Ira C. and Charles S.
Van Nov Residences Item number 7 Page 3

dimensional. A painted image of the muse's face is sandwiched between two pieces of translucent drapery glass. The bow included in this design is actually three-dimensional. Flanking this central window is a pair of tulip and floral pattern, one-over-one lights, stained glass windows. Of the same design and structure are three windows that face the east. A door, which leads to an open porch and faces east, contains a smaller (one-over-one lights), stained glass window of similar design. Repeating the tulip motif, is a light fixture and a pair of sconces, both of brass and frosted glass.

Second Story

All entrances to the second story rooms have transoms, which open. Located in the second story centralized hall, east side, is a framed, full-length beveled mirror, with egg and dart molding and flanked by fluted piers and crowned by a pointed arch.

Bedrooms, Study and Baths

There are four bedrooms (including master bedroom and maid's room), three baths, and a study located on the second floor. The master bedroom, study and west bedroom contain fireplaces with terra-cotta tile. Baths contain handpainted, opalescent tile (repeating the tulip motif), with egg and dart bullnose tile. Differing from the oak woodwork of the remainder of the residence is the birch woodwork in the east bedroom.

Parlor and Porches

A small parlor leads to the sunporch (north end). To the southwest is a sleeping porch.

THIRD FLOOR

Located on the third floor is a ballroom, bath, porch and storage room.

CARRIAGE HOUSE

Construction of the carriage house is stone, wood and brick. A gabled roof is of wood shingle with terra-cotta cresting.

North Elevation

A central wooden paneled garage door is flanked by a pair of recessed, double hung sash windows, sixteen-over-one lights, with stone sills. Above the garage door is a shed roof supported by large, wooden brackets. Double gables of the second floor contain a single double hung sash window, with eight-over-one lights. A central shed dormer with a multi-paned, paneled door flanked by two double-hung sash windows, four-over-one lights, is positioned above the garage door.

East Elevation

At the first floor level are three recessed windows with six lights, rusticated stone sills and rusticated keystones. Located at the second floor level are two recessed, double hung sash windows, twelve-over-one lights, with stone sills. At the third floor wood shingle gable is a pair of double

United States Department of the Interior
National Park Service

National Register of Historic Places
Inventory—Nomination Form

For NPS use only
received
date entered

The Ira C. and Charles S.
Continuation sheet Van Noy Residences

Item number 7

Page 4

hung sash windows, eight-over-one lights. At the bricked end of the east façade are two multi-paned double hung sash windows with brick sills.

South Elevation

The south façade consists of a garage with a wooden sliding door, including a window with twelve lights. Flanking the door are two, multi-paned double hung sash windows with brick sills. Second floor wood shingled gable includes a pair of double hung sash windows, six-over-one lights. Third floor dormer contains a pair of double hung sash windows, eight-over-one lights. A chimney is located at the roof's southern slope.

West Elevation

Fenestration of the west façade is consistent with that of the east façade with the exception of the southern end. Here, there is a single double hung sash window, one-over-one lights with brick sill. The façade of the first floor central extension is stucco. There is no fenestration of the brick end extension.

Alterations

A greenhouse, which was located to the west of the main residence, is extinct.

Present Status and Condition

The residence is occupied and the condition of both structures is excellent.

Site

The residence is located on an estate just to the southeast of the main entrance of Swope Park. To the west is a residential neighborhood; to the north is Swope Park; to the east is a parking lot for the park; and to the south are recreational areas maintained by the park system.

FOOTNOTES

¹ Western Contractor. 24 February 1909, pp. 11-12

² Ibid.

³ Marvin Huey, stained and decorative glass expert from Kansas City, Missouri, examined the glass work at this residence.

⁴ According to Mr. Huey, these doors may be stock.

United States Department of the Interior
National Park ServiceNational Register of Historic Places
Inventory—Nomination Form

For NPS use only
received
date entered

Continuation sheet The Ira C. and Charles S.
Van Noy Residences

Item number

7

Page

5

6800 Elmwood

This Italianate-style, two-story structure measures approximately 45 by 58 feet and is located at 6800 Elmwood in southeastern Kansas City, Missouri.¹ Costing \$25,000 to build for Charles Van Noy in 1909,² the residence is situated on three acres of land set back from Elmwood Avenue. The house is approached by a semi-circular drive and the eastern edge of the property is distinguished by a wrought-iron fence. A fountain was installed equidistance from the fence and main entrance. A carriage house is located to the west of the main residence.

EXTERIORConstruction and Materials

The residence is constructed of wood, stone and iron beam. All exterior walls are of stone with wood and stucco (west façade). Stone chimneys are located at the south and north façades. Denticulated frieze molding extends the perimeter of the structure as well as scroli-like modillions along the perimeter of the roof line. Windows contain rusticated lintels and lugsills, north, east and south façades. Brass sconces and decorative lighting adorn the east façade.

Roof

The shallow, hipped, pan and roll tiled roof has, at its center, a domed skylight with a polygonal lantern.

East Elevation

Articulating the main façade is a two-story portico with a balustrade and four wooden ionic columns flank the end bays. Three bays wide, the first and second story end bays are fenestrated with double hung sash windows, nine-over-one lights. Central bay, first and second story, consist of single pane etched glass doors with etched sidelights and above the first floor entrance, an etched glass transom (see Alterations). The main entrance is reached by a series of stone steps.

North Elevation

A porte-cochère with segmental arches supported by fluted, doric columns (and one ionic column, southwest corner) resting on stone bases is located on the north façade. A wooden balustrade, interrupted by a series of stone piers, lines the edge of an open porch, connecting the first-story portico of the main façade with the porte-cochère. Fenestration of the first story includes, from east to west, a pair of double hung sash windows, nine-over-one lights; a single window, four-over-one lights; a single window, nine-over-one lights; a single window, four-over-one lights; then finally, a single window, six-over-one lights. Second story fenestration consists of five windows, all nine-over-one lights. All windows are double hung sash. A side door of etched glass and transom is reached by a series of stone steps through the porte-cochère. Above the porte-cochère is a sun porch with a shallow hipped pan and roll tiled roof.

United States Department of the Interior
National Park ServiceNational Register of Historic Places
Inventory—Nomination Form

For NPS use only
received
date entered

Continuation sheet The Ira C. and Charles S.
Van Noy Residences

Item number 7

Page 6

West Elevation

The west façade is of stucco, stone and half-timber. Fenestration includes, on the first floor, a single-paned, stained glass window to the immediate south of the secondary entrance and a series of three, single-paned stained glass windows, second floor, south end. Below, is a series of three double hung sash windows, six-over-one lights. At the far south end of the west façade, first and second story, are two double hung sash windows, nine-over-one lights. A deck, connected to the rear entrance, is also located at this elevation.

South Elevation

At the south façade is a large projecting bay, fenestrated by three double hung windows, with multi-paned lights. To the east of the bay is a side entrance with beveled glass and transom, capped by a pedimented tin roof (with tile cresting) supported by large wooden brackets. Fenestration of the south façade includes two small, recessed etched glass windows, first floor east end. (see Alterations). At the west end, second story, are three single paned, stained glass windows above three double hung sash windows, six-over-one lights, first floor. All other fenestration contains multi-paned top lights.

INTERIOR

Outstanding features of the interior of this residence include a domed skylight with multi-paned windows and a second floor gallery. All floors are decorated with wall murals of various themes, oak embellishments such as beamed ceilings; bead, and egg and dart molding; wide lintels over doorways; doric columns and engaged half-columns; and decorative wall sconces and fixtures. Original oak woodwork is intact as well as the wall murals, except where noted.

Main Entrance and Foyer

A double entrance hall with leaded, art nouveau-styled beveled glass doors framed in oak is located on the first floor level. Foyer floor is a tiled, floral pattern. Embellishing the south wall is a large beveled hall mirror framed by a pair of ionic columns with leather swags, supporting a large entablature. Above the wooden plate railing is a stenciled, art nouveau floral pattern covering the perimeter of the foyer wall.

First Floor Atrium

The first floor atrium consists of a circular entablature decorated with egg and dart molding above a frieze of triglyphs and metopes. The entablature is supported by a series of doric columns embellished with egg and dart echinus. Half-columns, which frame each entrance to the rooms off the circular entrance, are similarly decorated. Atrium walls are decorated with murals depicting an English countryside landscape. Embellishing the walls of the first floor atrium are eight pairs of bronze and drapery glass sconces, styled as beer steins.

United States Department of the Interior
National Park Service

National Register of Historic Places
Inventory—Nomination Form

For NPS use only
received
date entered

The Ira C. and Charles S.

Continuation sheet Van Noy Residences

Item number 7

Page 7

Northeast Parlor

Seven wall murals, framed in gold leaf plaster, depicting rococo-esque "fete-galante" scenes, surround the room of the northeast parlor. Also rococo in design is the ceiling decor of a leaf motif in plaster.

North and South Side Entrances

The north side entrance consists of a beveled glass transomed door, decorative art nouveau light fixture, tiled floor and a separate half-bath. The south entrance, similarly decorated, does not include a half-bath.

Smoking Room

Heavier in decor than the remainder of the interior is the smoking room. Murals, with depictions of an Italian villa and surrounding countryside, decorate the walls as well as a denticulated plate railing, a glazed, terracotta fireplace, and a copper and stained glass ceiling fixture. Adding to the prominent design is the green-stained woodwork and the "beer stein" sconces.

Breakfast and Dining Area

Originally a serving quarters, the breakfast room contains oak, built-in cabinets, and can be reached through the kitchen and through the main dining room. Decorating the upper register of the walls of the main dining room is a mural depicting an Italian countryside. A window seat, plate railing and a combination crystal and bronze chandelier hanging below a plaster floral medallion further embellish this room.

Library

Located at the southeast end of the first floor is the library with its large, arched stone fireplace with rusticated stone voussoirs. The wood mantel of the fireplace is supported by large, wood modillions. Flanking the fireplace are built-in cabinets with copper plated zinc, beveled glass doors. Paneled wainscotting, trimmed with egg and dart molding, embellish the walls.

Grand Stairway and Side Alcoves

Leading to the music landing and second floor is the grand stairway. The stairway, with paneled newel posts at its base, is flanked by alcoves adorned with murals depicting equestrian scenes. At the northwest end of the north alcove is a closed door faced with beveled glass. An entrance to the basement is located at the southwest corner of the south alcove.

Music Landing

Painted in a Sir Joshua Reynoldsesque manner, the wall murals of the music landing possibly depict a mythological scene, including the god of marriage, Hymen. The more curious of the many murals of this residence, the music landing murals are painted with much more skill and competence. A series of three contemporary stained glass windows of an art nouveau theme are located at both the west and south walls. At either side of the stair-

United States Department of the Interior
National Park Service

National Register of Historic Places
Inventory—Nomination Form

For NPS use only
received
date entered

Continuation sheet The Ira C. and Charles S. Item number 7 Page 8
Van Nov Residences

case leading to the second floor are two bronze wall sconces depicting mythological figures.

Second Floor Atrium and Dome

At the second floor level, a circular balustrade with paneled newel posts rests on a wide entablature. Above the balustrade is an octagonally shaped multi-paned glass dome, resting on an entablature, above eight double hung sash windows, each six-over-three lights. An art nouveau, leaded stained glass lantern crowns the dome. The walls of the second floor atrium are decorated with murals identical in style and theme to the first floor atrium murals, with the addition of a female equestrian figure. Flanking the top of the staircase and entrance to the second floor parlor (east end) is a pair of doric columns and a pair of doric half-columns.

East Parlor, Bedrooms, Baths and Maid's Quarters

The second floor parlor, actually an entryway to the second floor portico, is decorated with wall murals depicting a pastoral countryside scene. Each of the four bedroom doorways contains a wide lintel. There are two full baths with hand-painted art nouveau tile. A separate maid's quarters and private stairway is located at the northwest end of the second floor.

Basement

The basement contains a bath, original boiler room and coal storage.

CARRIAGE HOUSE

Construction of the carriage house is stone, wood and wood shingle. A denticulated cornice runs the perimeter of the structure. A stone chimney is located at the roof's western slope.

East Elevation

The east façade of the carriage house consists of a garage reached by two sliding doors with multi-paned lights. Flanking the doors are two, multi-paned, double hung sash windows with stone sills. The two shed dormers of the second floor are each fenestrated with three multi-paned, double hung sash windows.

South Elevation

There is a pair of double hung sash windows, first floor east end. All other windows are in disrepair.

West Elevation

A sliding door with multi-panes, and a dormer are located at the western façade.

North Elevation

At the first floor level there is a pair of double hung sash windows, multi-paned with stone sills. Second floor gable window is boarded-up.

**United States Department of the Interior
National Park Service**

**National Register of Historic Places
Inventory—Nomination Form**

For NPS use only
received
date entered

Continuation sheet The Ira C. and Charles S.
Van Nov Residences Item number 7 Page 9

Alterations

The following decorative and stained glass elements are of contemporary design: (May-August 1984)

1. Music landing stained glass windows
2. The decorative glass of the first and second floor doors, east façade.
3. The decorative glass windows, southeast elevation.

In addition, the kitchen has been totally modernized.

Present Status and Condition

The residence is occupied and is in very good condition. The condition of the carriage house roof is poor.

Site

The residence is located on an estate just to the southeast of the main entrance of Swope Park. To the west is a residential neighborhood, to the north is Swope Park, to the east is a parking lot for the park, and to the south are recreational areas maintained by the Kansas City, Missouri park system.

FOOTNOTES

¹Western Contractor. 24 February 1909, pp. 11-12.

8. Significance

Period	Areas of Significance—Check and justify below			
<input type="checkbox"/> prehistoric	<input type="checkbox"/> archeology-prehistoric	<input type="checkbox"/> community planning	<input type="checkbox"/> landscape architecture	<input type="checkbox"/> religion
<input type="checkbox"/> 1400–1499	<input type="checkbox"/> archeology-historic	<input type="checkbox"/> conservation	<input type="checkbox"/> law	<input type="checkbox"/> science
<input type="checkbox"/> 1500–1599	<input type="checkbox"/> agriculture	<input type="checkbox"/> economics	<input type="checkbox"/> literature	<input type="checkbox"/> sculpture
<input type="checkbox"/> 1600–1699	<input checked="" type="checkbox"/> architecture	<input type="checkbox"/> education	<input type="checkbox"/> military	<input type="checkbox"/> social/
<input type="checkbox"/> 1700–1799	<input type="checkbox"/> art	<input type="checkbox"/> engineering	<input type="checkbox"/> music	<input type="checkbox"/> humanitarian
<input type="checkbox"/> 1800–1899	<input type="checkbox"/> commerce	<input type="checkbox"/> exploration/settlement	<input type="checkbox"/> philosophy	<input type="checkbox"/> theater
<input checked="" type="checkbox"/> 1900–	<input type="checkbox"/> communications	<input type="checkbox"/> industry	<input type="checkbox"/> politics/government	<input type="checkbox"/> transportation
		<input type="checkbox"/> invention		<input type="checkbox"/> other (specify)

Specific dates	1909	Builder/Architect	Clifton Breeden Sloan
----------------	------	-------------------	-----------------------

Statement of Significance (in one paragraph)

The Ira C. Van Noy and Charles S. Van Noy residences are eligible for listing in the National Register of Historic Places according to criterion C and are significant in the following areas: Architecture: Designed in 1909 by Kansas City architect Clifton Breeden Sloan, the Van Noy residences remain some of the most unique residential architecture to be found within Kansas City. Originally built outside the city limits, in close proximity to Swope Park as an expansive country estate, the residences, to date, remain the sole development on the seventeen acre site. Although their exterior design is representative of a more sophisticated use of indigenous stone, the most significant aspect of the Van Noy residences is their sophisticated and well crafted interiors. The structures are lavished with exceptional interior ornamentation in the form of stained and leaded glass and elaborate woodwork (6700 Elmwood); and stained and leaded glass, painted curved wall murals, classical carved woodwork and a glass domed atrium (6800 Elmwood).

United States Department of the Interior
National Park ServiceNational Register of Historic Places
Inventory—Nomination Form

For NPS use only
received
date entered

Continuation sheet The Ira C. and Charles S.
Van Noy Residences

Item number 8

Page 1

Architecture and History

Ira and Charles Van Noy, prominent Kansas City entrepreneurs, commissioned Clifton B. Sloan (1870-1958), a prolific Kansas City architect, in 1909, to design their magnificent estates which were located outside the city limits, just south of the main entrance to Swope Park.² The Van Noy structures, with their profusion of intricate interior woodwork and molding, stained and leaded glass, elaborately painted curved wall murals and sophisticated lighting design, evidence some of the most spectacular residential architecture to be found within the city. Like the Van Noy structures, a number of outstanding homes were built of roughhewn local stone including "Mineral Hall" (Louis S. Curtiss, 1903-1904; 1905); the James H. Harkless Residence (1905); and the Dr. Flavel J. Tiffany residence, designed by Sloan himself. The Van Noy homes, too, exhibit a similar skill in their use of indigenous stone, however, the most significant aspect of these structures is their interior design.

According to one local historian, "residential architecture in the 1900s covered the full range of sizes, types, and building costs and the entire spectrum of styles was used or adapted in modified form...No particular style was favored for residences."³ The Van Noy residences surely illustrate that particular variety.

The structure at 6700 Elmwood derived its style from the architectural motifs of English Tudor prototypes, freely mixing these characteristics in its American eclectic expression. Its steeply pitched, front facing gable, ornamental half-timbering and stucco walls are dominant features that are derived from English precedents. The interior of the residence exemplified both Classical and Art Nouveau detailing.

The structure located at 6800 Elmwood is a picturesque example, like the Dr. Flavel J. Tiffany residence, 100 Garfield Avenue (Sloan, 1908-09), of the architect's use of rough-hewn local stone.⁴ The residence exemplifies an amalgamation of styles, including the two story front exterior porch - Greek Revival; prominent, denticulated cornice, symmetrical front facade and overall shape - Italian Renaissance; and a classical use of interior space, character and detailing - Neo-Classical. The most outstanding architectural detail feature of this residence is the domed atrium, which is derived from its Roman prototype.

In addition, it is of interest to compare the site of the Van Noy estates to the beginning of Kansas City's suburban development launched by J.C. Nichols in 1908. Although the wealthy were still building mansions, mostly in the northeast district of the city, smaller homes on suburban-sized lots began to line the streets of south Kansas City. In just a few years, phenomenal growth had occurred, with the bulk of housing consisting of modest bungalows to two-story residences placed on standard lots. Today, as Kansas City witnesses more and more subdivision and development, the rural-like setting of the Van Noy residences appear as an oasis in the midst of an expanding urban metropolis.

Charles Van Noy occupied the residence at 6800 Elmwood until 1914 and Ira Van Noy occupied the estate at 6700 Elmwood until 1916. In 1918, the estate was purchased by Andrew A. Kramer and Samuel C. Hawthorne. In July of 1983, the entire estate, including the structures and carriage houses was purchased from the Kramer family by Elbert and Doris Harris. In April 1984, the residence at 6800 Elmwood which had remained unoccupied for almost 30 years was purchased by Jim Duff and Gary Havrum.⁵

United States Department of the Interior
National Park Service

**National Register of Historic Places
Inventory—Nomination Form**

For NPS use only
received
date entered

The Ira C. and Charles S.
Continuation sheet Van Noy Residences

Item number 8

Page 2

On September 28, 1983, the residences, including the carriage houses and 17 acre site, were placed on the Kansas City Register of Historic Places.

Clifton B. Sloan (1870-1958)

Clifton B. Sloan came to Kansas City in May of 1889 and had no formal training as an architect and consequently his career as an architect got off to a slow and shaky start. Sloan was born in Springfield, Illinois in 1870 and as his personal letters show, probably spent most of his youth in Cincinnati, Ohio. At the age of 14, he had dropped out of a technical school and with possible prodding from his older brother, William (a realtor in Kansas City) Sloan arrived in Kansas City in May of 1889.

Sloan took on many jobs, including work in an architect's office, as a brick layer and as a supervisor over a rock crusher. Finally in 1890, he was hired by an architect in Hannibal, Missouri, but left this position after only two weeks, returning to Kansas City. It was not until 1902, after several other temporary jobs, including a five year stint teaching mechanical drawing at a local high school, that Clifton Sloan opened an office as an architect. In 1909, The Van Noy brothers, Charles and Ira, commissioned Clifton Sloan to design their magnificent estates, which remain two unique examples of Sloan's architecture. Sloan designed other structures in Kansas City including Rockhurst College's Administration Building, the Record Building (1905), the Bahr Furniture Company Building (1912), the Kansas City Dental College Building (1913), and the White Company Building (1922), however, his most interesting works were residences.

Ira C. (1861-19??) and Charles S. (1870-1927) Van Noy

Ira C. and Charles S. Van Noy, sons of Dr. H.C. and Katherine Raber Van Noy, spent most of their childhood in Mercer County, Missouri on the family farm. In 1866, Ira began working for the Union News Company of Kansas City, Missouri.⁹ Charles too, entered the employ of Union News Company for two years. Finally in 1893, Ira and Charles Van Noy together embarked in the retail cigar and news business at No. 1076 Union Avenue, Kansas City, Missouri. In 1897, just four years after the Van Noy brothers began their establishment, the business was incorporated under the name of the Van Noy Railway Hotel and News Company¹¹ with Ira as President and General Manager; and Charles as Secretary and Treasurer.

United States Department of the Interior
National Park Service

**National Register of Historic Places
Inventory—Nomination Form**

For NPS use only

received

date entered

The Ira C. and Charles S.

Continuation sheet Van Noy Residences

Item number 8

Page 3

On October 1, 1914, the Van Noy Railway Hotel and News Company and the Brown News Company consolidated under the corporate name of the Van Noy-Brown News Company, with the headquarters remaining in Kansas City.¹² Ira remained the President with Charles as Vice President. Creating the largest concern of its kind in the country, the Van Noy-Brown News Company in 1915 merged with the Interstate News Company of New York City, becoming the Van Noy Interstate News Company.¹³ The general offices of the new organization remained in Kansas City. At that time, the Van Noy Interstate News Company controlled the distribution of newspapers, magazines, books, candy and cigars on 90,000 of the 250,000 miles of railways in the country, including the Missouri Pacific; Denver and Rio Grande; Western Pacific; St. Louis, Iron Mountain and Southern; Kansas City Southern; and Illinois Central. In addition, they controlled the railways of the Southern Pacific System, which comprised the Atlantic Division from New Orleans to El Paso and the Pacific Division from El Paso to Portland, Oregon.¹⁴

FOOTNOTES

1. Western Contractor, 24 February 1909, pp. 11-12.
2. Ibid.
3. George Ehrlich, Kansas City, Missouri: An Architectural History. (Kansas City: Historic Kansas City Foundation, 1979) p. 62.
4. From 1900-1920, a number of outstanding homes were built of rough-hewn stone.
5. Landbooks for 6700 and 6800 Elmwood, Chicago Title Company, 1025 Grand Avenue, Kansas City, Missouri, 64142.
6. Sherry Piland, "A Kansas City Architect: Clifton B. Sloan," Historic Kansas City Gazette, March-April, 1982.
7. Ibid.
8. The Kansas Citian, 21 December 1915, p. 646.

United States Department of the Interior
National Park Service

**National Register of Historic Places
Inventory—Nomination Form**

For NPS use only

received

date entered

The Ira C. and Charles S.
Continuation sheet Van Noy Residences

Item number 8

Page 4

9. Ibid, p. 660.
10. Ibid, p. 658.
11. Ibid.
12. Kansas City Star, 27 December 1914, p. 10A. The article stated that the merger would become effective on 1 October 1914.
13. Kansas Citian, p. 646.
14. Ibid.

9. Major Bibliographical References

See attached.

10. Geographical Data

Acreage of nominated property 12 acres

Quadrangle name "Kansas City, Mo."

Quadrangle scale 1:24,000

UTM References

A

1	5
---	---

3	6	7	2	5	0
---	---	---	---	---	---

4	3	1	8	1	6	0
---	---	---	---	---	---	---

Zone Easting Northing

B

1	5
---	---

3	6	7	2	5	0
---	---	---	---	---	---

4	3	1	7	9	2	0
---	---	---	---	---	---	---

Zone Easting Northing

C

1	5
---	---

3	6	7	0	3	0
---	---	---	---	---	---

4	3	1	7	9	4	0
---	---	---	---	---	---	---

D

1	5
---	---

3	6	7	0	3	0
---	---	---	---	---	---

4	3	1	3	1	7	0
---	---	---	---	---	---	---

E

--	--

--	--	--	--	--	--

--	--	--	--	--	--	--

F

--	--

--	--	--	--	--	--

--	--	--	--	--	--	--

G

--	--

--	--	--	--	--	--

--	--	--	--	--	--	--

H

--	--

--	--	--	--	--	--

--	--	--	--	--	--	--

Verbal boundary description and justification

(See Continuation sheet)

List all states and counties for properties overlapping state or county boundaries

state	code	county	code
-------	------	--------	------

state	code	county	code
-------	------	--------	------

11. Form Prepared By

name/title 1. Cydney Millstein Architectural Historian

organization Historic Kansas City Foundation date September 24, 1986

street & number 20 West 9th Street telephone 816/471-3391

city or town Kansas City state Missouri 64105

12. State Historic Preservation Officer Certification

The evaluated significance of this property within the state is:

☐ national ☐ state ☒ local

As the designated State Historic Preservation Officer for the National Historic Preservation Act of 1966 (Public Law 89-665), I hereby nominate this property for inclusion in the National Register and certify that it has been evaluated according to the criteria and procedures set forth by the National Park Service.

State Historic Preservation Officer signature Wayne E. Gross
for Frederick A. Brunner, Ph.D., P.E., Director, Department of Natural Resources and
title State Historic Preservation Officer date 2/17/87

For NPS use only

I hereby certify that this property is included in the National Register

date

Keeper of the National Register

Attest:

date

Chief of Registration

**United States Department of the Interior
National Park Service**

**National Register of Historic Places
Inventory—Nomination Form**

For NPS use only
received
date entered

Continuation sheet The Ira C. and Charles S.
Van Noy Residences Item number 9 Page 1

Clifton Breeden Sloan papers. Jackson County Historical Society, Archives and Research Library, Room 103, Old Independence Court House, Independence Square, Independence, Missouri 64050.

Harris, Cyril M. Dictionary of Architecture and Construction. New York: McGraw Hill, Inc. 1975.

Kansas City Star. 27 September 1914, p. 10A.

Kansas City Times. 1 November 1927, np.

Kansas City Times. 29 November 1938, np.

Land Books. Chicago Title Insurance Company. 1025 Grand Avenue, Kansas City, Missouri 64142.

Landmarks Commission Staff Report. Case #250-S-49 and #0074-D. 6700 and 6800 Elmwood. Landmarks Commission, 414 East 12th Street, Kansas City, Missouri 64106.

Piland, Sherry. "A Kansas City Architect: Clifton B. Sloan." Historic Kansas City Gazette. March-April, 1982.

The Kansas Citian. 21 December 1915, p. 646.

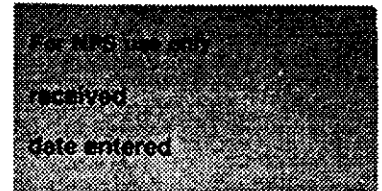
Water Permits #41081 and #41082. City Hall, 414 East 12th Street, Kansas City, Missouri 64106.

Western Contractor. 24 February 1909, pp. 11-12.

Whitney, Carrie Westlake. Kansas City, Missouri--Its History and Its People, 1808-1908. Vol. II. Chicago: S. J. Clarke Pub. Co., 1908. pp. 658-661.

**United States Department of the Interior
National Park Service**

**National Register of Historic Places
Inventory—Nomination Form**



The Ira C. and Charles S.

Continuation sheet Van Noy Residences

Item number 10

Page 1

The Van Noy Residences property consists of one contiguous nominated area of twelve acres comprising four structures (two houses and two carriage houses) and a four-acre lake.* The legal description for the property is found in three separate parcels. 6700 Elmwood contains two parcels of land described legally as follows: In the northwest 1/4 section of the northwest 1/4 section of Section 11, Township 48 north, Range 33 west, the west 330.87 feet of the east 661 feet of the north 788.44 feet of said 1/4 of the 1/4 section, excepting the parts in the street. The second parcel is described as follows: Part of the northwest 1/4 of the northwest 1/4 of Section 11, Township 48 north, Range 33 west. Beginning on the northeast corner of said 1/4 of a 1/4 section the west along the northern line 330.87 feet, then south 420 feet, then east 330.87 feet to the east line of said 1/4 of a 1/4 section, then north along said east line 420 feet to the point of beginning, excepting parts in the streets.

6800 Elmwood is legally described as follows: Part of the northwest 1/4 of the northwest 1/4 of Section 11, Township 48 north, Range 33 west. Beginning on the east line of said 1/4 of a 1/4 section, 420 feet south of the northeast corner, then west 330.87 feet, then south 370 feet, then east 330.74 feet to the east line of said 1/4 of a 1/4 section, then north along said east line 370 feet to the beginning, excepting parts in the street.

All the above described land is located in the City of Kansas City, County of Jackson, State of Missouri. It contains the structures and cultural landscape directly associated with the Van Noy Residences.

*As the location, number, and type of structures remaining within the nominated area is shown incorrectly on the attached topographic map, please refer to the attached site plan for correct information. The site plan was based on data contained in a city water department map and a site inspection of the property in 1986.

United States Department of the Interior
National Park Service

**National Register of Historic Places
Inventory—Nomination Form**

For NPS use only
received
date entered

The Ira C. and Charles S.

Continuation sheet Van Noy Residences

Item number 10

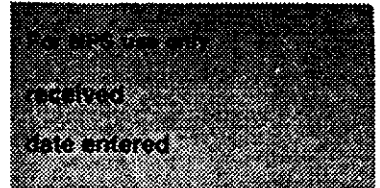
Page 1

6700 ELMWOOD
NW 1/4 NW 1/4 SEC 11 48 33
W 330.87 FT OF E 661.74 FT OF
N 788.44 FT OF SD 1/4 1/4
EXC PRT IN ST

6800 ELMWOOD
PRT NW 1/4 NW 1/4 SEC 11 48
33 BEG ON E LI SD 1/4 1/4 SEC
420 FT S OF NE COR TH W
330.87 FT TH S 370 FT TH E
330.74 FT TO E LI SD 1/4 1/4
TH N ALG SD E LI 370 FT TO
BEG EXC PRT IN ST

**United States Department of the Interior
National Park Service**

**National Register of Historic Places
Inventory—Nomination Form**



Continuation sheet The Ira C. and Charles S.
 Van Noy residences

Item number 11

Page 1

2. Gerald Lee Gilleard
Survey Coordinator and
State Contact Person
Department of Natural Resources
Division of Parks, Recreation,
and Historic Preservation
Historic Preservation Program
P. O. Box 176
Jefferson City, Missouri 65102
Date: June 16, 1987
Telephone: 314/751-5365

**United States Department of the Interior
National Park Service**

**National Register of Historic Places
Inventory—Nomination Form**



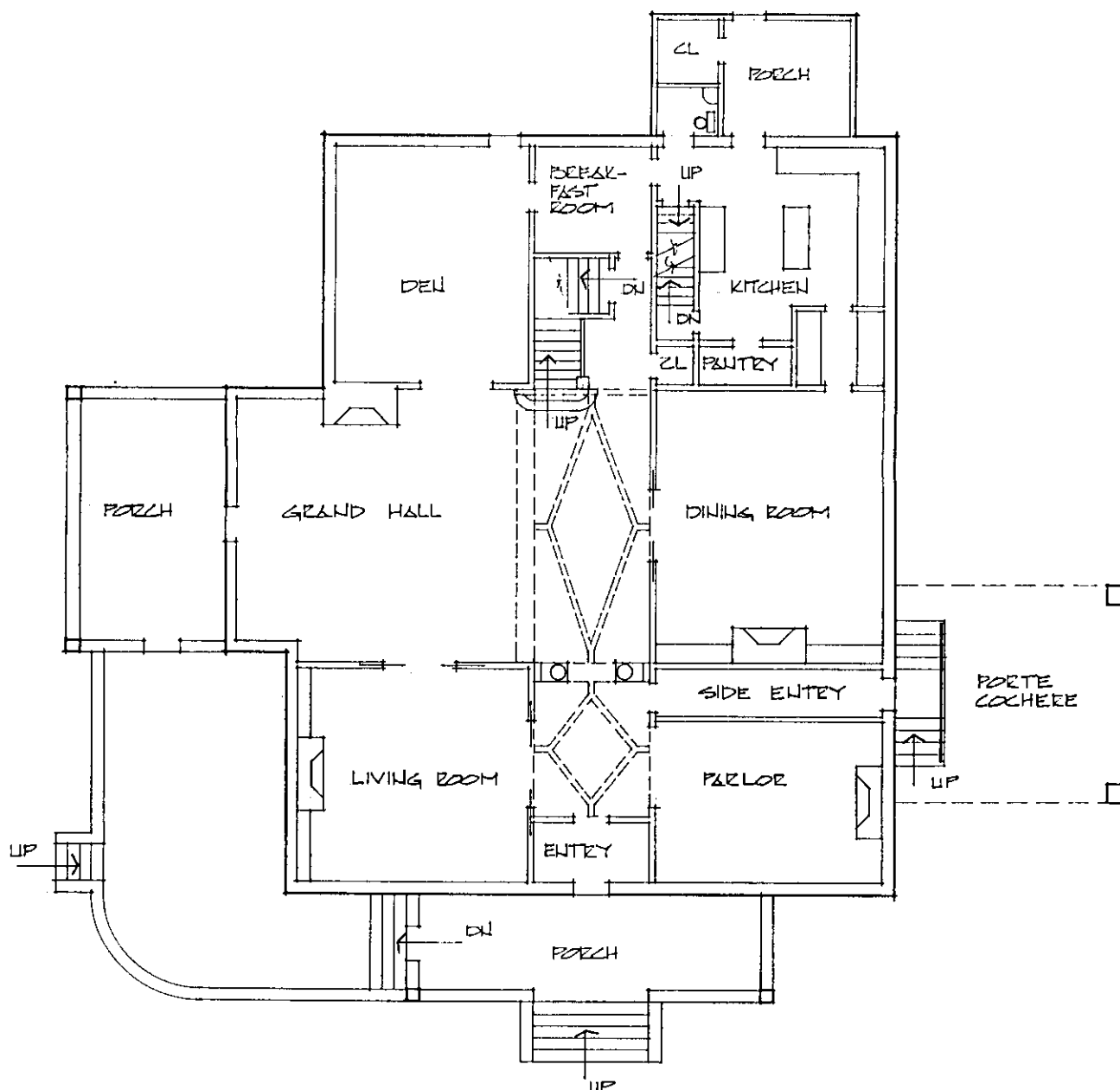
The Ira C. and Charles S.

Continuation sheet Van Noy Residences

Item number 11

Page 1

2. James M. Denny
Chief, Survey and Registration
and State Contact Person
Department of Natural Resources
Division of Parks, Recreation,
and Historic Preservation
Historic Preservation Program
P. O. Box 176
Jefferson City, Missouri 65102
Date: September 24, 1986
Telephone: 314/751-5376

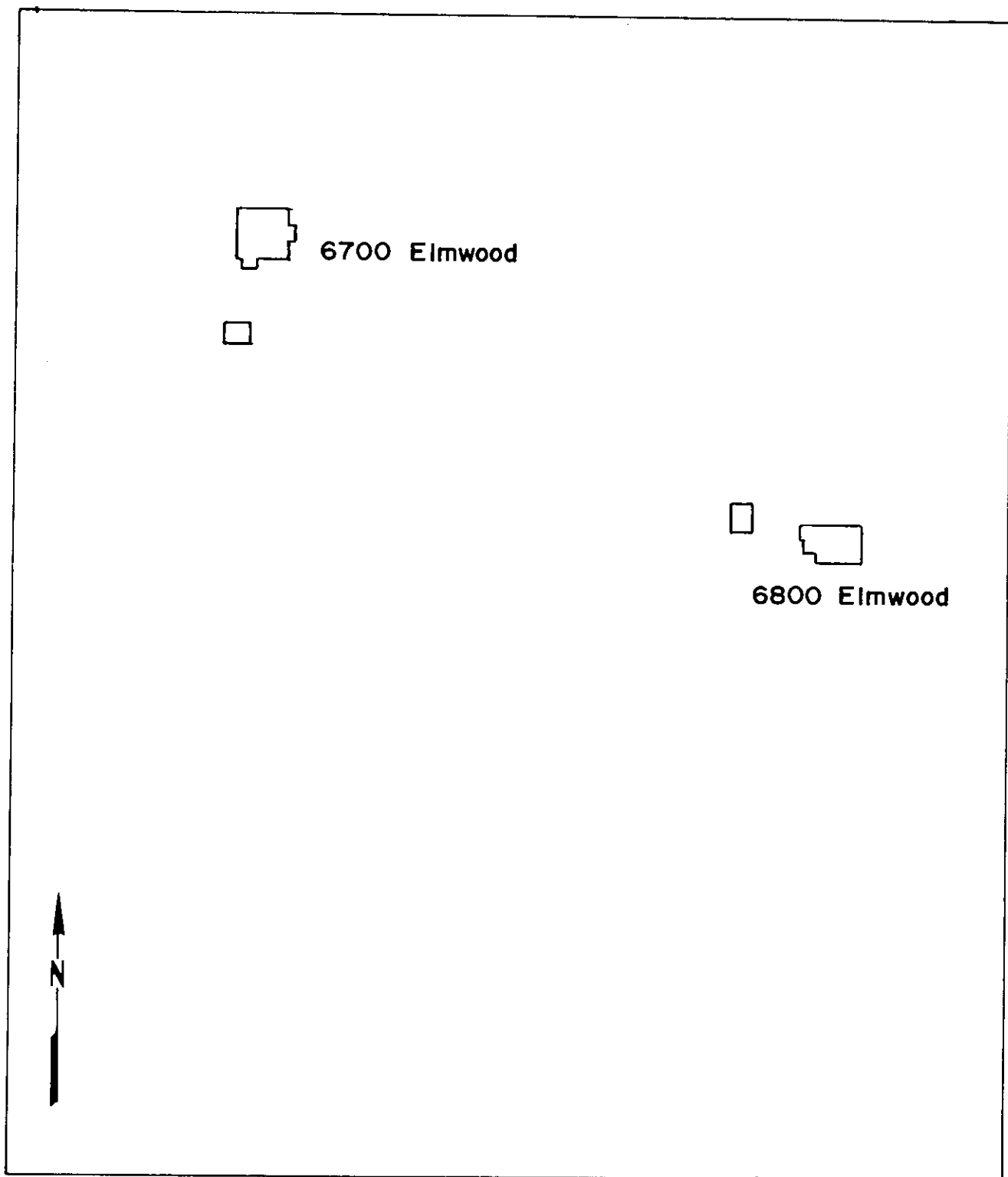


FIRST FLOOR PLAN
 VAN HOY MANSION
 KANSAS CITY, MO.

$\frac{1}{8}'' = 1'-0''$
 6700 ELMWOOD

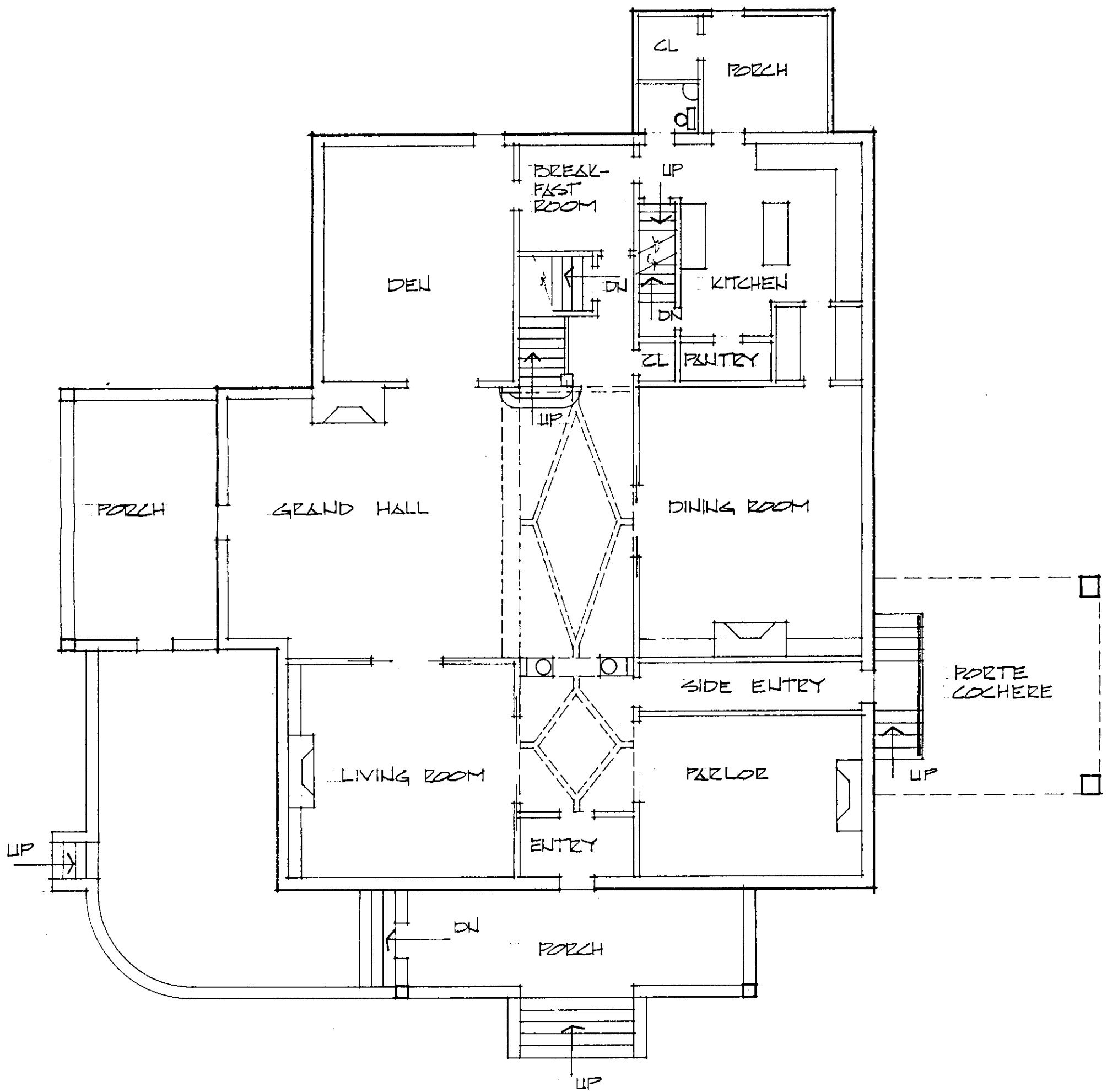


Figure: 1



THE IRA C. AND CHARLES S. VAN NOY RESIDENCES
SITE PLAN

0 25 50 100
FEET



FIRST FLOOR PLAN
VAN HOY MANSION
KANSAS CITY, MO.

$\frac{1}{8}'' = 1'-0''$
6700 ELMWOOD

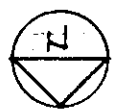
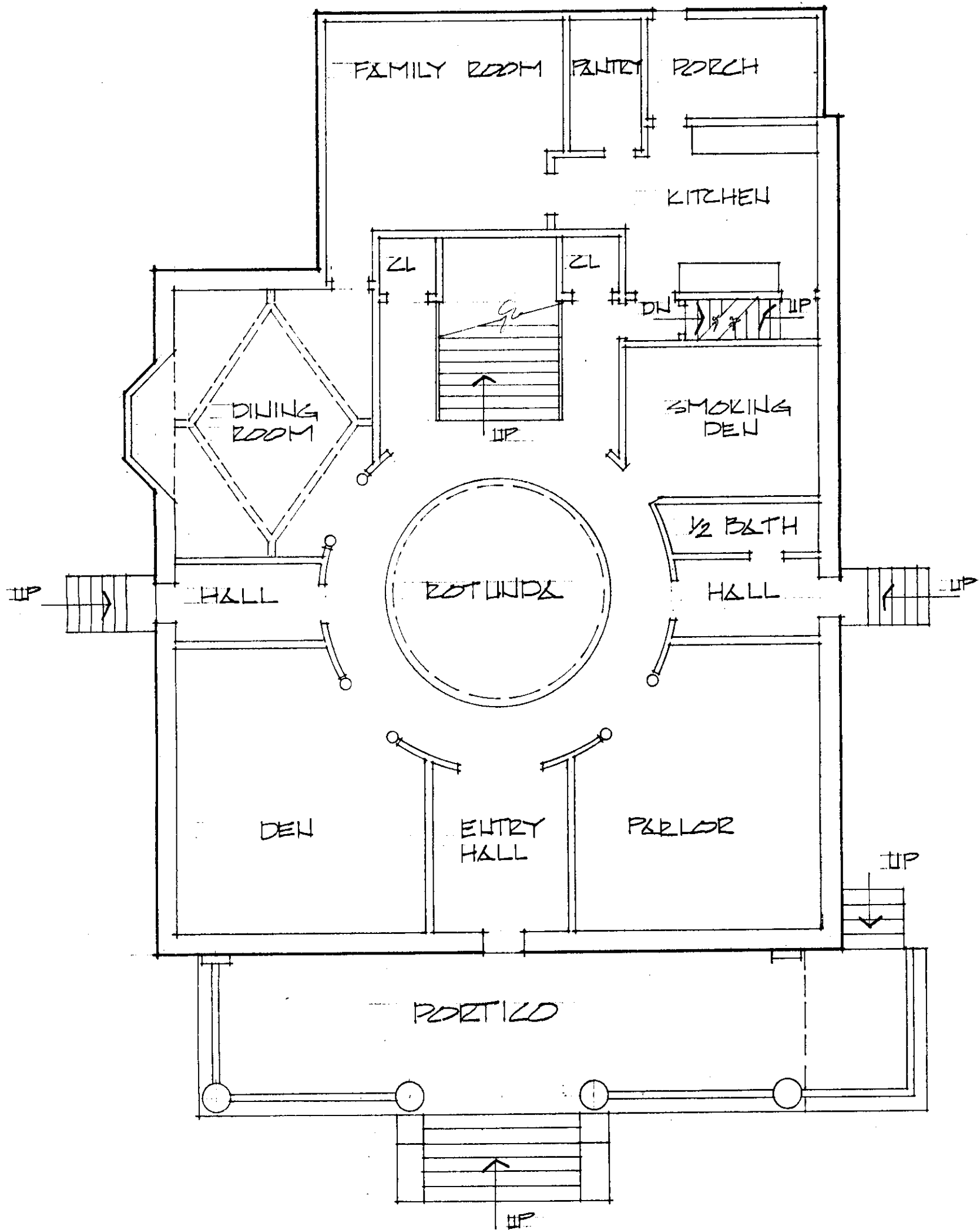


Figure: 1

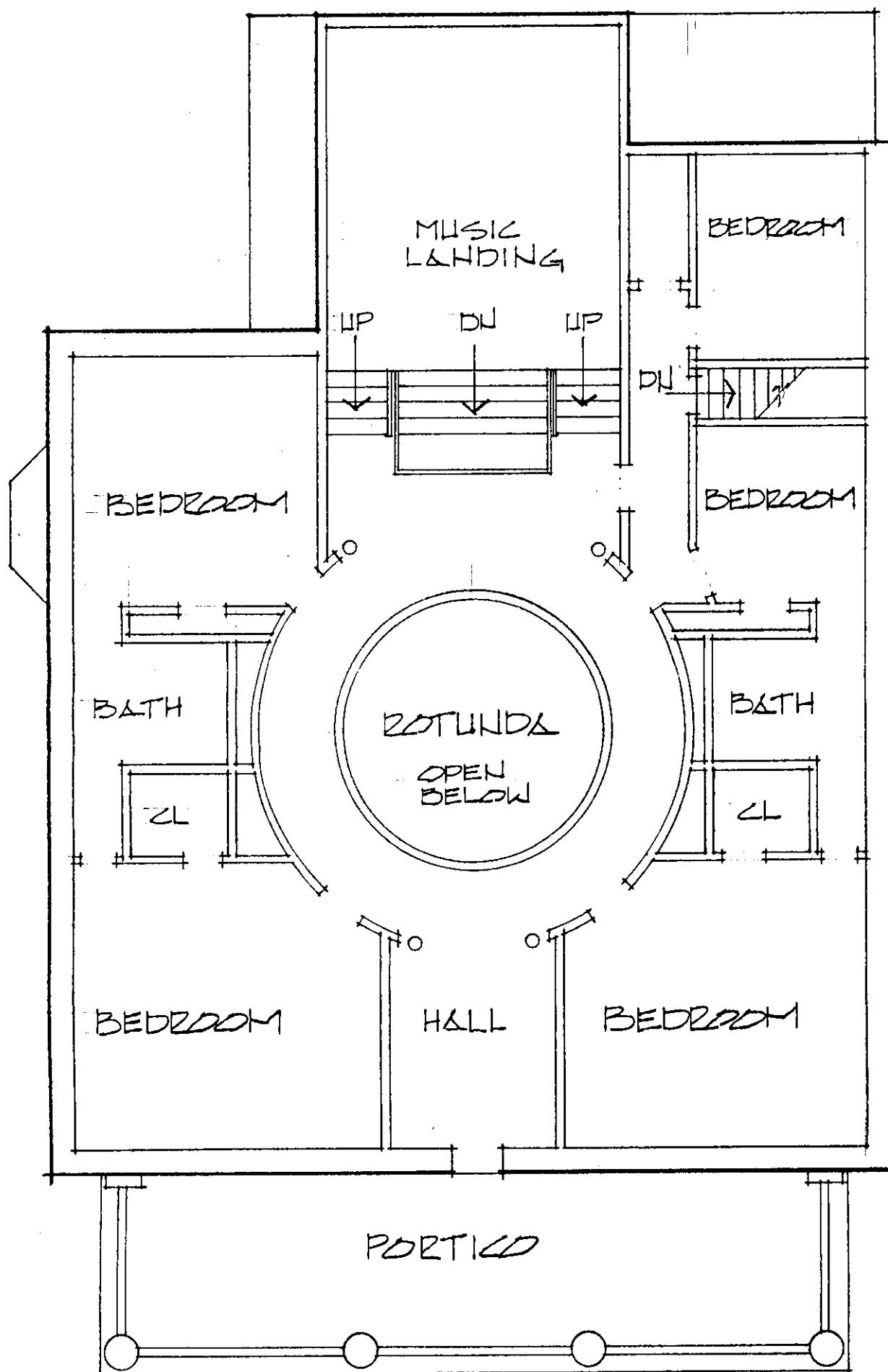


FIRST FLOOR PLAN
VAN HOY MANSION
KANSAS CITY, MO.

$\frac{1}{8}" = 1'-0"$
6800 ELMWOOD



Figure: 2

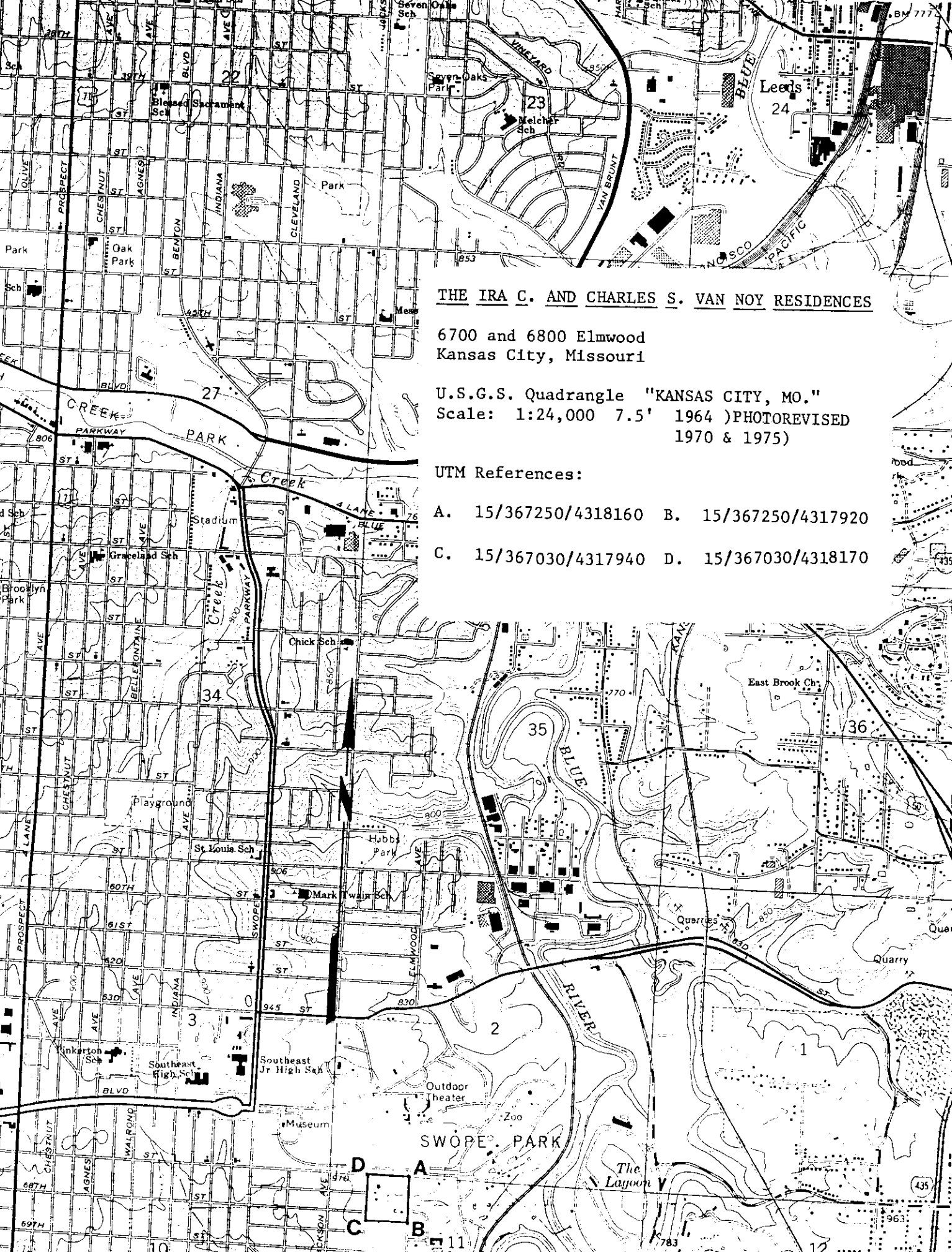


SECOND FLOOR PLAN
VAN HOY MANSION 1800 ELMWOOD
KANSAS CITY, MO.

1/8" = 1'-0"



Figure: 3



THE IRA C. AND CHARLES S. VAN NOY RESIDENCES

6700 and 6800 Elmwood
Kansas City, Missouri

U.S.G.S. Quadrangle "KANSAS CITY, MO."
Scale: 1:24,000 7.5' 1964)PHOTOREVISED
1970 & 1975)

UTM References:

- A. 15/367250/4318160 B. 15/367250/4317920
C. 15/367030/4317940 D. 15/367030/4318170

The Ira C. and Charles S. Van Noy Residences
6700 Elmwood and 6800 Elmwood
Kansas City, Missouri

U.S.G.S.
"Kansas City, MO" 7.5' Scale: 1:24000
1964 (Photorevised 1970 & 1975)

UTM References:

A. 15/367170/4318170

B. 15/367220/4318000

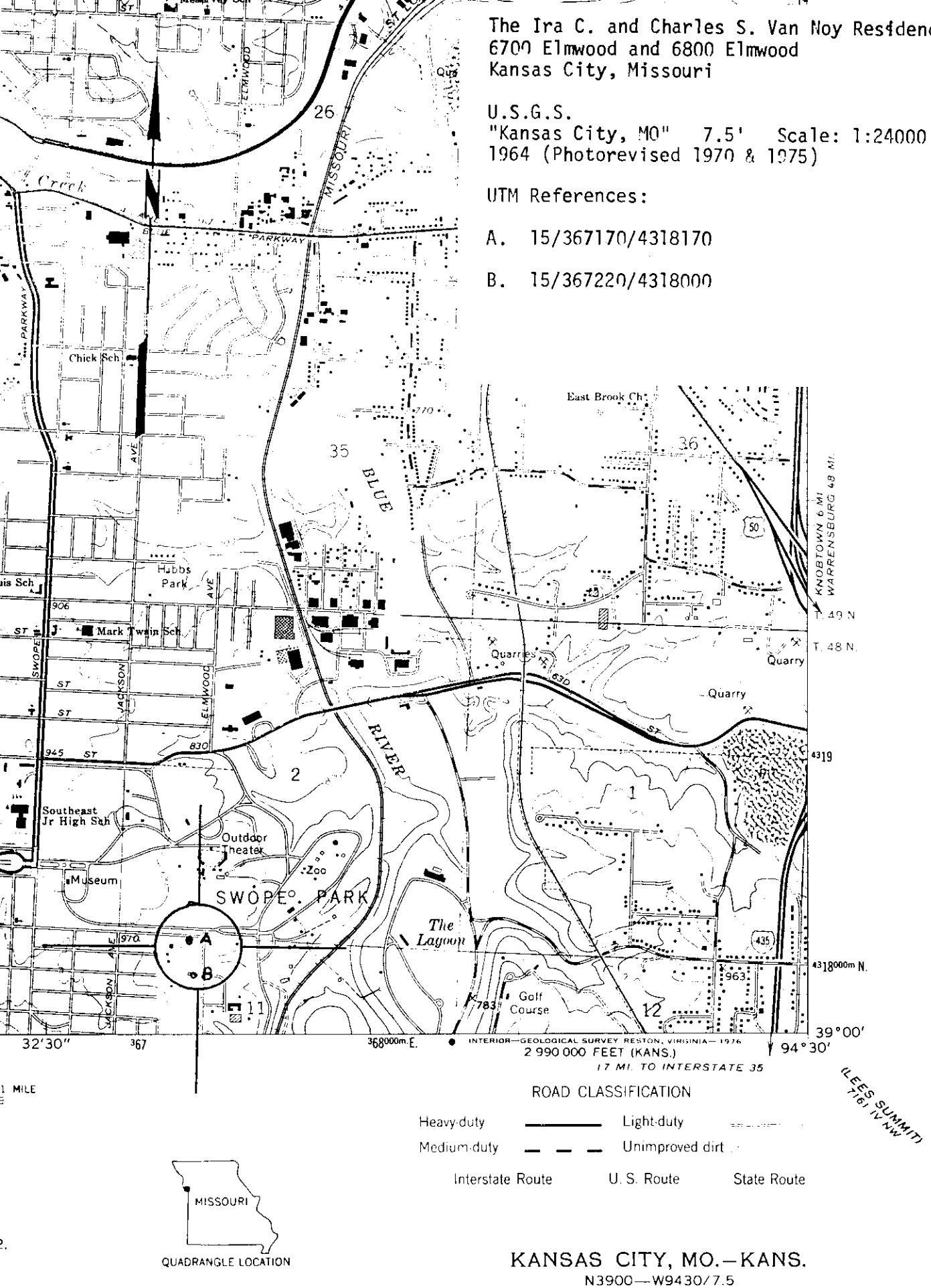


Photo Log:

Name of Property: **Van Noy, Ira C. and Charles S., Residences**

City or Vicinity: **Kansas City**

County: **Jackson County**

State: **MO**

Photographer: **Photographic Creations and Illustrations**

Date

Photographed: **1984**

Description of Photograph(s) and number, include description of view indicating direction of camera:

- 1 of 24. 6700 Elmwood, N façade (main entrance).
- 2 of 24. 6700 Elmwood, W façade.
- 3 of 24. 6700 Elmwood, W façade showing flat roof, port-cochere.
- 4 of 24. 6700 Elmwood, E façade.
- 5 of 24. 6700 Elmwood, S façade.
- 6 of 24. 6700 Elmwood, Interior, showing part of the main entry and great hall.
- 7 of 24. 6700 Elmwood, Interior, NE parlor, showing stained glass, leaded glass and ornamental tile fireplace.
- 8 of 24. 6700 Elmwood, Interior, stained glass windows at music landing.
- 9 of 24. 6700 Elmwood, Interior, dining room showing elaborate built-in china cabinet.
- 10 of 24. 6700 Elmwood, Carriage house, N façade.
- 11 of 24. 6700 Elmwood, Carriage house, E façade.
- 12 of 24. 6700 Elmwood, Carriage house, S façade.
- 13 of 24. 6700 Elmwood, Carriage house, W façade.
- 14 of 24. 6800 Elmwood, E (main) façade showing two story entry portico.
- 15 of 24. 6800 Elmwood, E façade and partial N façade showing segmented arch porte-cochere.
- 16 of 24. 6800 Elmwood, N façade detail of porte-cochere.
- 17 of 24. 6800 Elmwood, S façade showing secondary entrance, semi-hexagonal projecting bay and part of the dome can be viewed at roof level.
- 18 of 24. 6800 Elmwood, partial E and S facades, clear view of the dome.
- 19 of 24. 6800 Elmwood, W façade showing rear entrance.
- 20 of 24. 6800 Elmwood, interior view of part of the dining room and curved walls of the atrium.
- 21 of 24. 6800 Elmwood, interior view looking up to second story and dome. Note the stained glass in the innermost section of the dome.
- 22 of 24. 6800 Elmwood, Carriage house, E façade and partial N.
- 23 of 24. 6800 Elmwood, Carriage house, S façade.
- 24 of 24. 6800 Elmwood, Carriage house, W façade.















































