

United States Department of the Interior
National Park ServiceNational Register of Historic Places
Registration Form

This form is for use in nominating or requesting determinations of eligibility for individual properties or districts. See instructions in *Guidelines for Completing National Register Forms* (National Register Bulletin 16). Complete each item by marking "x" in the appropriate box or by entering the requested information. If an item does not apply to the property being documented, enter "N/A" for "not applicable." For functions, styles, materials, and areas of significance, enter only the categories and subcategories listed in the instructions. For additional space use continuation sheets (Form 10-900a). Type all entries.

1. Name of Property

historic name St. Matthew's Chapel A.M.E. Church
other names/site number St. Matthew A.M.E. Church; 0-28

2. Location

street & number 309 Spruce Street N/A not for publication
city, town Boonville N/A vicinity
state Missouri code MO county Cooper code 053 zip code 65233

3. Classification

Ownership of Property

- ☒ private
☐ public-local
☐ public-State
☐ public-Federal

Category of Property

- ☒ building(s)
☐ district
☐ site
☐ structure
☐ object

Number of Resources within Property

Contributing	Noncontributing
<u>1</u>	<u> </u> buildings
<u> </u>	<u> </u> sites
<u> </u>	<u> </u> structures
<u> </u>	<u> </u> objects
<u>1</u>	<u> </u> Total

Name of related multiple property listing:
Historic Resources of Boonville, Mo.

Number of contributing resources previously
listed in the National Register 0

4. State/Federal Agency Certification

As the designated authority under the National Historic Preservation Act of 1966, as amended, I hereby certify that this
☒ nomination ☐ request for determination of eligibility meets the documentation standards for registering properties in the
National Register of Historic Places and meets the procedural and professional requirements set forth in 36 CFR Part 60.
In my opinion, the property ☒ meets ☐ does not meet the National Register criteria. ☐ See continuation sheet.

G. Tracy Mehan III
Signature of certifying official G. Tracy Mehan III, Director

3 August 89
Date

Department of Natural Resources and State Historic Preservation Officer

State or Federal agency and bureau

In my opinion, the property ☐ meets ☐ does not meet the National Register criteria. ☐ See continuation sheet.

Signature of commenting or other official

Date

State or Federal agency and bureau

5. National Park Service Certification

I, hereby, certify that this property is:

- ☐ entered in the National Register.
☐ See continuation sheet.
☐ determined eligible for the National
Register. ☐ See continuation sheet.
☐ determined not eligible for the
National Register.
☐ removed from the National Register.
☐ other, (explain:)

Signature of the Keeper

Date of Action

6. Function or Use

Historic Functions (enter categories from instructions)

Religion: religious structure

Current Functions (enter categories from instructions)

Religion: religious structure

7. Description

Architectural Classification
(enter categories from instructions)

Gothic Revival

Materials (enter categories from instructions)

foundation Concrete

walls Brick

roof Asphalt

other Wood

Describe present and historic physical appearance.

ST. MATTHEW'S CHAPEL A.M.E. CHURCH

SUMMARY: Completed in May 1892, St. Matthew's Chapel A.M.E. Church, 309 Spruce Street, is a one story, rectangular, gable roofed brick structure with a hipped roof, three story tower projecting from the facade, or south-southeast elevation, and a rectangular, hipped roof, brick apse attached to the rear, or north-northwest elevation. All window and door headers on the Gothic Revival church utilize transoms and the architectural style's characteristic pointed arch, interpreted with a brick soldier course. A narrow brick cornice encircles the building. In 1967, the frame parsonage, constructed circa 1900 and located to the west of the chapel, was connected to the chapel with the addition of a concrete block annex. Alterations to the church, however, were minimal and most of its historic fabric has been retained and is still apparent. The chapel, its tower, the parsonage, and the annex are sheathed with composition shingles. Despite interior alterations and several additions, St. Matthew's Chapel A.M.E. Church retains sufficient physical characteristics to convey integrity of workmanship, materials, and design, in addition to its integrity of location and setting.

ELABORATION: The facade of St. Matthew's Chapel A.M.E. Church is dominated by its three story central tower. The tower has flared corner buttresses, and a double leaf door with pointed arch transom provides entry on this elevation. The first story, side elevations of the tower have centered, one-over-one, double hung sash with transom. In the second story level of the tower facade, a circular bay, which may have housed stained glass, is now closed with vinyl siding. Below is a concrete plaque which indicates the church was organized in 1881, while an inscription above the circular bay reads: "St. Matthews Chapel A.M.E. Church, Erected May 1892."

The flared buttresses end above the second story level in a corbelled ledge. On each elevation of the tower's third story, the arched, centered bay is filled with patterned wood cut-outs and hood molds above rectangular wooden louvers. Originally surmounted by a spire with gablets, the tower is now covered by a shallow, hipped roof. The chapel facade is completed by flanking bays formed by buttresses and containing single one-over-one, double hung windows with transoms.

United States Department of the Interior
National Park Service

National Register of Historic Places Continuation Sheet

St. Matthew's Chapel A.M.E. Church

Section number 7 Page 1

A cast concrete foundation etched to resemble blocks is exposed beneath the window ledge on the east side of the tower on the facade and on the east-northeast elevation. Buttresses divide the east-northeast elevation into four bays. Centered in each bay is a one-over-one, double hung sash with arched transom, identical to those on the facade.

A hipped roof apse is located in the center of the rear, or north-northwest, elevation. A fanlight is located above the apse. A single, one-over-one, double hung window is placed to the west of the apse, but the annex addition, which extends flush with the apse and to the west, conceals the lower portion of the window, leaving only the transom visible. The concrete block annex connects to the frame parsonage ell and its rear, concrete block addition, which projects slightly beyond the rear wall of the annex. The rear of the annex is divided into four asymmetrical bays. The easternmost bay is filled by a window, which lights a storage area behind the church's original rear wall. A door and two additional windows complete the rear elevation of the annex.

The annex is connected to the west-southwest elevation of the chapel along its entire length, but most of the elevation's details have been concealed rather than altered or removed. Buttresses divide the elevation into four bays. A pair of double doors is flanked by one window in the northernmost bay and single windows in each bay to the south. All windows are identical to those on the facade and are intact beneath the annex addition. Presently, only their transoms are visible above the annex's shallow hipped roof. An interior chimney pierces the chapel roof at the eaves.

The frame parsonage is constructed on a central hall plan with a rear ell and rests on a brick foundation. Its orientation is identical to the orientation of the church, but, with the construction of the annex which connects the parsonage to the church, only the facade and the west-southwest elevation are exposed. The parsonage is clad in vinyl siding. Brick interior end chimneys are set at each gable.

On the facade, double leaf doors open into the brick veneered vestibule which is the only portion of the annex visible from this elevation. The facade of the parsonage is divided into three symmetrically arranged bays. Its central bay contains a door with transom, and the flanking bays contain two-over-two, double hung sash. Plain wood posts support a shed roofed porch which extends from the easternmost bay to the west edge of the facade.

**United States Department of the Interior
National Park Service**

**National Register of Historic Places
Continuation Sheet**

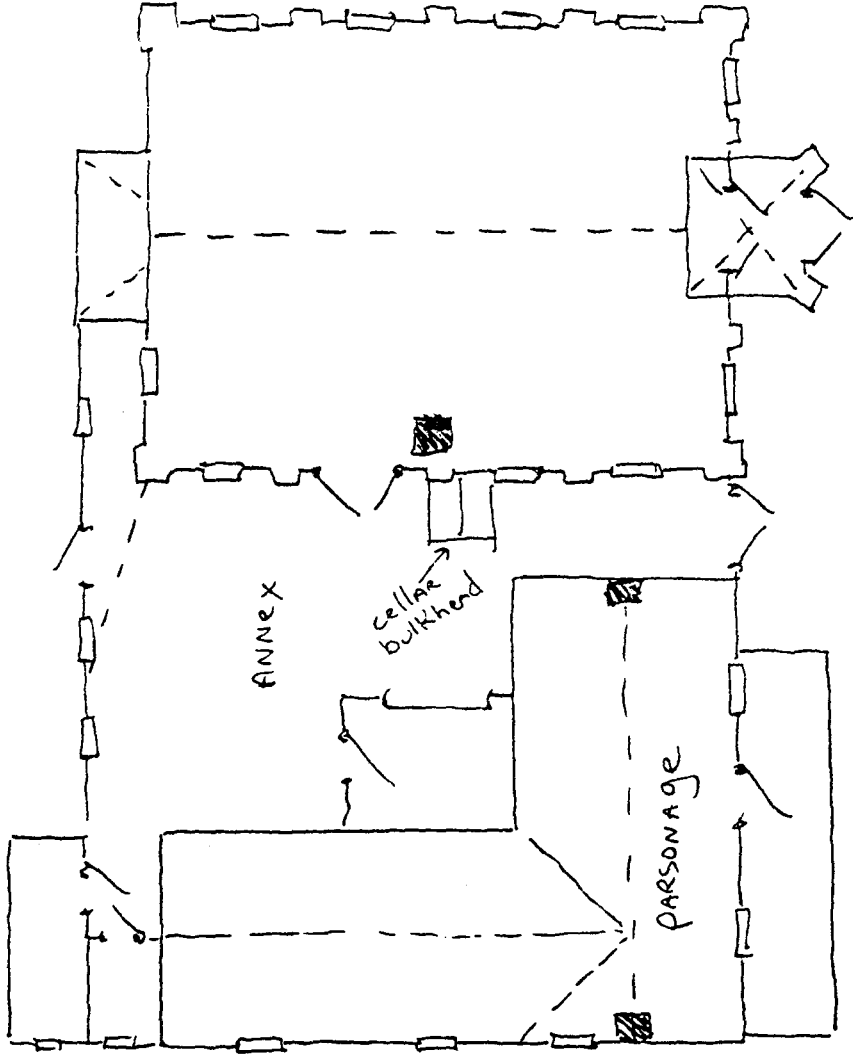
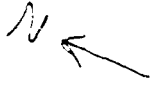
St. Matthew's Chapel A.M.E. Church

Section number 7 **Page** 2

In the gable end of the east-southeast elevation, a single two-over-two, double hung window is located north of the interior chimney. Two asymmetrically placed bays filled by four-over-four, double hung sash are set in this elevation of the ell. In 1967, a concrete block gable extension was added to the ell to house restrooms. Two windows on its east-southeast elevation are its only fenestration.

The parsonage and the chapel have undergone several renovations. The parsonage retains little of its interior integrity, while the application of vinyl siding has obscured all exterior details. In 1975, the chapel ceiling was lowered and, in 1979, the roof sheathing, which was originally tin, was replaced with composition shingles.

St. Matthew's Chapel A.M.E. Church
309 Spruce St.
Boonville, Cooper Co.



Spruce St.

8. Statement of Significance

Certifying official has considered the significance of this property in relation to other properties:

☐ nationally ☐ statewide ☒ locally

Applicable National Register Criteria ☒ A ☐ B ☐ C ☐ D

Criteria Considerations (Exceptions) ☒ A ☐ B ☐ C ☐ D ☐ E ☐ F ☐ G

Areas of Significance (enter categories from instructions)

Ethnic Heritage - Black

Period of Significance

1892

Significant Dates

1892

Cultural Affiliation

N/A

Significant Person

N/A

Architect/Builder

Unknown

State significance of property, and justify criteria, criteria considerations, and areas and periods of significance noted above.

SUMMARY: St. Matthew's Chapel A.M.E. Church, 309 Spruce Street, is significant under Criterion A in the area of ETHNIC HERITAGE--BLACK. One of only two black churches remaining in Boonville, the church is also one of only three historic black public buildings in the town.

ELABORATION: The founding date of St. Matthew's Chapel A.M.E. Church is uncertain. Although a plaque on the present church, which was completed in May 1892, indicates it was founded in 1881, city directories for 1869 and 1876 indicate an A.M.E. church was present at 309 Spruce Street in those years (see "Historic Resources of Boonville, Missouri: The Steamboat Era, 1826-1870"). Only three black churches were established in Boonville. St. Matthew's Chapel A.M.E. Church and the Morgan Street Baptist Church (listed 1983 in the High-Morgan-Spring Street Historic District), constructed in 1884, survive, while the Sixth Street Church was destroyed. The remaining churches and the Sumner Public School, constructed 1915-1916, are the only historic public buildings which represent Boonville's black heritage.

9. Major Bibliographical References

Beasley's Boonville Directory, for 1876-7. Hannibal, Missouri: James W. Beasley, 1876.

Dyer, Robert L. Boonville: An Illustrated History. Boonville, Missouri: Pekitanoui Publications, 1987.

"Souvenir Program of the 102nd Anniversary of St. Matthew AME Church, Boonville, Mo." 1983.

Previous documentation on file (NPS):

- ☐ preliminary determination of individual listing (36 CFR 67) has been requested
- ☐ previously listed in the National Register
- ☐ previously determined eligible by the National Register
- ☐ designated a National Historic Landmark
- ☐ recorded by Historic American Buildings Survey # _____
- ☐ recorded by Historic American Engineering Record # _____

☐ See continuation sheet

Primary location of additional data:

- ☒ State historic preservation office
- ☐ Other State agency
- ☐ Federal agency
- ☐ Local government
- ☐ University
- ☐ Other

Specify repository: _____

10. Geographical Data

Acreage of property Less than one acre

UTM References

A 15 522140 4313320
Zone Easting Northing

C

B
Zone Easting Northing

D

☐ See continuation sheet

Verbal Boundary Description

The property lies within the eastern 1/2 of Lot #4, Block 15, of J. Wyan's Addition in the City of Boonville, Missouri.

☐ See continuation sheet

Boundary Justification

The boundary encompasses the single parcel of land that is occupied by the property and its immediate surroundings. The legally recorded lot lines that have been historically associated with the property retain integrity and form the limits of the boundary.

☐ See continuation sheet

11. Form Prepared By

name/title Preservation Planning Section

organization Missouri Historic Preservation Program date May 5, 1989

street & number P. O. Box 176 telephone 314-751-5365

city or town Jefferson City state Missouri zip code 65102

Photo Log:

Name of Property: **St. Matthew's Chapel A.M.E. Church**

City or Vicinity: **Boonville**

County: **Cooper County** State: **MO**

Photographer: **S. Mitchell**

Date

Photographed: **January 1989**

Description of Photograph(s) and number, include description of view indicating direction of camera:

- 1 of 8. View from SW
- 2 of 8. View from S
- 3 of 8. Detail of tower, view from S
- 4 of 8. Detail of entrance, view from S
- 5 of 8. Detail of window, view from E
- 6 of 8. View from NE
- 7 of 8. View from NE
- 8 of 8. View from SW













