

United States Department of the Interior  
National Park Service

## National Register of Historic Places Registration Form

This form is for use in nominating or requesting determinations for individual properties and districts. See instructions in *How to Complete the National Register of Historic Places Registration Form* (National Register Bulletin 16A). Complete each item by marking "x" in the appropriate box or by entering the information requested. If an item does not apply to the property being documented, enter "N/A" for "not applicable." For functions, architectural classification, materials, and areas of significance, enter only categories and subcategories from the instructions. Place additional entries and narrative items on continuation sheets (NPS Form 10-900a). Use a typewriter, word processor, or computer, to complete all items.

### 1. Name of Property

historic name Sehrt, August House

other names/site number N/A

### 2. Location

street & number 275 Webster Street ☒ not for publication

city or town Augusta ☒ vicinity

state Missouri code MO county St. Charles code 183 zip code 63332

### 3. State/Federal Agency Certification

As the designated authority under the National Historic Preservation Act, as amended, I hereby certify that this ☒ nomination ☐ request for determination of eligibility meets the documentation standards for registering properties in the National Register of Historic Places and meets the procedural and professional requirements set forth in 36 CFR Part 60. In my opinion, the property ☒ meets ☐ does not meet the National Register criteria. I recommend that this property be considered significant ☐ nationally ☐ statewide ☒ locally. (☐ See continuation sheet for additional comments.)

Claire F. Blackwell 9 August 1994  
Signature of certifying official/Title Deputy SHPO Date

Missouri Department of Natural Resources

State of Federal agency and bureau

In my opinion, the property ☐ meets ☐ does not meet the National Register criteria. (☐ See continuation sheet for additional comments.)

Signature of certifying official/Title

Date

State or Federal agency and bureau

### 4. National Park Service Certification

I hereby certify that the property is:

Signature of the Keeper

Date of Action

☐ entered in the National Register.  
☐ See continuation sheet.

☐ determined eligible for the  
National Register  
☐ See continuation sheet.

☐ determined not eligible for the  
National Register.

☐ removed from the National  
Register.

☐ other, (explain): \_\_\_\_\_

Sehrt, August House

Name of Property

St. Charles Co., MO

County and State

### 5. Classification

#### Ownership of Property

(Check as many boxes as apply)

- ☐ private  
☒ public-local  
☐ public-State  
☐ public-Federal

#### Category of Property

(Check only one box)

- ☒ building(s)  
☐ district  
☐ site  
☐ structure  
☐ object

#### Number of Resources within Property

(Do not include previously listed resources in the count.)

Contributing	Noncontributing	
1	0	buildings
		sites
		structures
		objects
1	0	Total

#### Name of related multiple property listing

(Enter "N/A" if property is not part of a multiple property listing.)

#### Number of contributing resources previously listed in the National Register

0

Historic Resources of Augusta, MO

### 6. Function or Use

#### Historic Functions

(Enter categories from instructions)

DOMESTIC/single dwelling

#### Current Functions

(Enter categories from instructions)

WORK IN PROGRESS

### 7. Description

#### Architectural Classification

(Enter categories from instructions)

no style

#### Materials

(Enter categories from instructions)

foundation stone

walls brick

roof metal

other wood

#### Narrative Description

(Describe the historic and current condition of the property on one or more continuation sheets.)

Sehrt, August House

Name of Property

St. Charles Co., MO

County and State

## 8. Statement of Significance

### Applicable National Register Criteria

(Mark "x" in one or more boxes for the criteria qualifying the property for National Register listing.)

- ☒ A Property is associated with events that have made a significant contribution to the broad patterns of our history.
- ☐ B Property is associated with the lives of persons significant in our past.
- ☒ C Property embodies the distinctive characteristics of a type, period, or method of construction or represents the work of a master, or possesses high artistic values, or represents a significant and distinguishable entity whose components lack individual distinction.
- ☐ D Property has yielded, or is likely to yield, information important in prehistory or history.

### Criteria Considerations

(Mark "x" in all the boxes that apply.)

Property is:

- ☐ A owned by a religious institution or used for religious purposes.
- ☐ B removed from its original location.
- ☐ C a birthplace or grave.
- ☐ D a cemetery.
- ☐ E a reconstructed building, object, or structure.
- ☐ F a commemorative property.
- ☐ G less than 50 years of age or achieved significance within the past 50 years.

### Areas of Significance

(Enter categories from instructions)

Ethnic Heritage: European

Architecture

### Period of Significance

ca. 1860

### Significant Dates

ca. 1860

### Significant Person

(Complete if Criterion B is marked above)

n/a

### Cultural Affiliation

n/a

### Architect/Builder

unknown

### Narrative Statement of Significance

(Explain the significance of the property on one or more continuation sheets.)

## 9. Major Bibliographical References

### Bibliography

(Cite the books, articles, and other sources used in preparing this form on one or more continuation sheets.)

### Previous documentation on file (NPS):

- ☐ preliminary determination of individual listing (36 CFR 67) has been requested
- ☐ previously listed in the National Register
- ☐ previously determined eligible by the National Register
- ☐ designated a National Historic Landmark
- ☐ recorded by Historic American Buildings Survey  
# \_\_\_\_\_
- ☐ recorded by Historic American Engineering Record # \_\_\_\_\_

### Primary location of additional data:

- ☒ State Historic Preservation Office
- ☐ Other State agency
- ☐ Federal agency
- ☐ Local government
- ☐ University
- ☐ Other

Name of repository:

Sehrt, August House

Name of Property

Name of Property

St. Charles Co., MO

County and State

## 10. Geographical Data

Acreage of Property 8.64

### UTM References

(Place additional UTM references on a continuation sheet.)

1	15	684180	4271120
Zone	Easting	North	ing

3			
Zone	Easting	North	ing

☐ See continuation sheet

### Verbal Boundary Description

(Describe the boundaries of the property on a continuation sheet.)

### Boundary Justification

(Explain why the boundaries were selected on a continuation sheet.)

## 11. Form Prepared By

name/title Mary M. Stiritz

organization \_\_\_\_\_ date 5 January 1994

street & number 12 Wydown Terrac

telephone \_\_\_\_\_

city or town St. Louis

state MO

zip code 63105

### Additional Documentation

Submit the following items with the completed form:

#### Continuation Sheets

#### Maps

A USGS map (7.5 or 15 minute series) indicating the property's location.

A Sketch map for historic districts and properties having large acreage or numerous resources.

#### Photographs

Representative black and white photographs of the property.

#### Additional Items

(Check with the SHPO or FPO for any additional items)

### Property Owner

(Complete this item at the request of SHPO or FPO.)

name Town of Augusta

street & number \_\_\_\_\_ telephone \_\_\_\_\_

city or town Augusta

state MO

zip code 63332

**Paperwork Reduction Act Statement:** This information is being collected for applications to the National Register of Historic Places to nominate properties for listing or determine eligibility for listing, to list properties, and to amend existing listings. Response to this request is required to obtain a benefit in accordance with the National Historic Preservation Act, as amended (16 U.S.C. 470 et seq.).

**Estimated Burden Statement:** Public reporting burden for this form is estimated to average 18.1 hours per response including time for reviewing instructions, gathering and maintaining data, and completing and reviewing the form. Direct comments regarding this burden estimate or any other aspect of this form, including suggestions for reducing the burden, should be sent to Washington, DC 20543.

United States Department of the Interior  
National Park Service

**National Register of Historic Places  
Continuation Sheet**

Section number 7 Page 1

Sehrt, August, House  
St. Charles County, MO

The August Sehrt House is a circa 1860 1 1/2 story brick house (Property Type: Vernacular Residence) located at 275 Webster Street in Augusta, St. Charles County, Missouri. It exhibits the characteristics of the most basic examples of the property type, including sparse detailing and simple, traditional plan. It stands on the original 8.64 parcel, a part of which was cultivated as vineyards. Minor alterations to the house have not detracted substantially from overall integrity of design and materials.

The side-gabled house with tin roof features a central-passage plan which divides the first floor into two rooms; a boxed stair leads to the basement and to the loft (Photo # 3 and Fig.1). Facing east, the five-bay primary facade is bilaterally symmetrical, the center-bay door exhibits a three-light transom; brick flat arches head the door and windows which are installed with 6/6 double-hung sash. The cornice line is trimmed with brick dentils. A new wood porch has replaced a deteriorated historic one. Gable ends feature small attic windows and interior chimneys with stove flues. The first floor rear (west) elevation features a window and two transomed doors which once opened to a porch now absent. Sited on sloping ground, the stone basement is exposed on the rear elevation and features a door, two full-sized windows with 6/6 double hung sash, and a small window installed with vertical wood slats. Access to the basement is also gained through a door located near the west corner of the north elevation. The north basement room is finished with a tongue-and-groove ceiling while the south room features exposed joists.

United States Department of the Interior  
National Park Service

# National Register of Historic Places Continuation Sheet

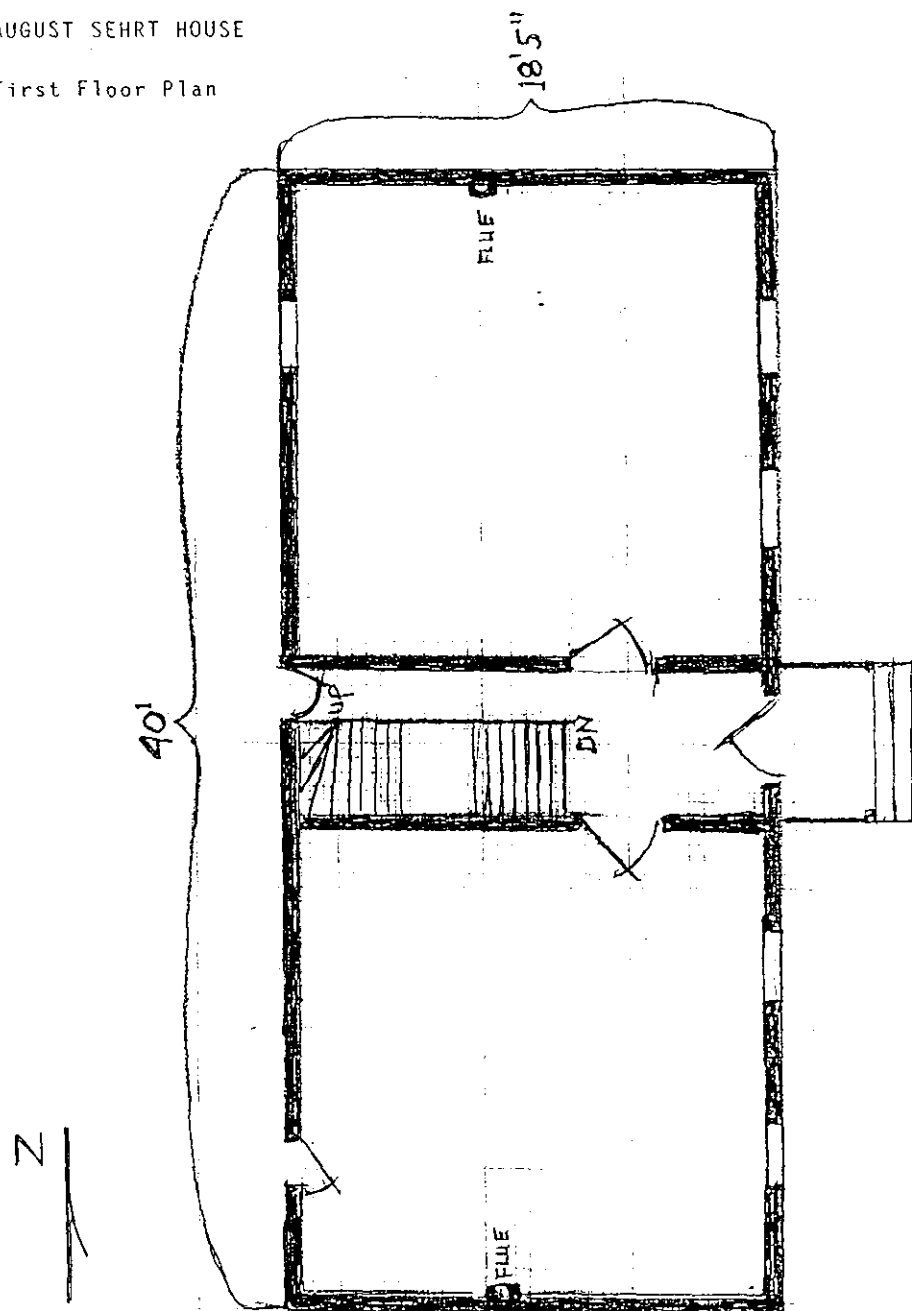
Section number 7 Page 2

Sehrt, August, House  
St. Charles County, MO

FIG. 1

AUGUST SEHRT HOUSE

First Floor Plan



United States Department of the Interior  
National Park Service

**National Register of Historic Places  
Continuation Sheet**

Section number 8 Page 3

Sehrt, August House  
St. Charles County, MO

The August Sehrt House is significant under Criteria A and C in the following areas: ETHNIC HERITAGE: EUROPEAN: The August Sehrt House is a good, representative example of the houses constructed by Augusta's German settlers and the cultural traditions and processes which they brought with them to Missouri and, particularly, St. Charles County and Augusta. Sehrt was one of a number of emigrants from northwest Germany, the Old World cultural hearth of the traditions which, when transplanted to Augusta, influenced development of the town's German character and cultural cohesiveness. In addition, Sehrt was engaged as a carpenter/cabinetmaker and as a winegrower, occupations closely associated with Missouri German cultural traditions and which are associated with the nominated property. See Historic Context "German American Culture in Augusta, 1833-1944," and subthemes, "Immigration and Settlement, ca. 1830-1860," and "Wine Industry, ca. 1850-1917." ARCHITECTURE: The circa 1860 brick house is a well-preserved example of Property Type: Vernacular Residence, as it exhibits Missouri German vernacular traditions in its central passage plan and unembellished, sparsely detailed design. See Historic Context subtheme, "Architecture, ca. 1836-1943."

Born in Hannover, Germany, circa 1823, Frederick August Sehrt was living in St. Charles County by 1856 when he and Catharina Niederjohann were joined in marriage by George Muench, "a Preacher of a German congregation" (Muench later founded Mt. Pleasant Winery in Augusta). Between 1857 and 1860, Sehrt acquired the 8.74 acre tract on which the house stands. The 1860 census listed Sehrt as a master carpenter living with his wife Catharina, 26, born in Hannover, and Missouri-born son, Heinrich, age 3. The 1860 Missouri Gazetteer & Business Directory listed his occupation as a cabinetmaker. According to the 1860 Agricultural Census, Sehrt owned a farm of 4 acres of improved land with a cash value of \$1400; his modest livestock and produce consisted of 2 cows, 10 swine, 10 bushels of Irish potatoes, 75 pounds of butter, and 3 tons of hay. In 1880, the Agricultural Census reported Sehrt had sold 2000 gallons of wine in 1879 produced on 3 acres of vineyards. When Sehrt's estate was probated in 1884, his personal property included items associated with his occupations: wine casks, barrels, vats and kegs along with carpenter tools and a workbench. His widow was still living on the farm in 1900 with 3 adult children and a Hungarian family of renters; the census indicated that she was born in 1830, and emigrated in 1847.

The property was held by Sehrt family heirs until 1975 when it was purchased by the Town of Augusta. The house is currently being rehabilitated for use as a local history museum.

United States Department of the Interior  
National Park Service

## National Register of Historic Places Continuation Sheet

Section number 9, 10 Page 4

Sehrt, August House  
St. Charles County, MO

---

### 9. Major Bibliographic References

Mallinckrodt, Anita M. Historic Augusta, MO. Augusta, MO: Augusta Historical Society, 1994.

\_\_\_\_\_, comp. and trans. Historical Highlights from Town Board Records, 1855-1903. Washington, MO: Missouriian Publishing Company, 1990.

(see Section I, "Historic Resources of Augusta, Missouri" MPS, for additional references.)

### 10. Geographical Data

**Verbal Boundary Description:** District boundaries are indicated by the heavy broken line on the map entitled "Architectural Survey of Augusta," scale 1"=100'.

**Boundary Justification:** Boundaries were drawn to include all land historically associated with the property; the area is an unplatted addition to the town of Augusta.



United States Department of the Interior  
National Park Service

# National Register of Historic Places Continuation Sheet

Section number 10 Page 5

Sehrt, August House  
St. Charles County, MO

Architectural  
Survey of  
Augusta,  
Missouri  
October 1991  
Map by  
Pat Hays  
Baer

8.64 acres



August Sehrt House

ca. 1860

BOTTOM RD.

WEBSTER

\* noncontributing

0' 50' 100' 200' 300'  
FEET

MT. PLEASANT  
WINERY



5624



5619

5626



(22)

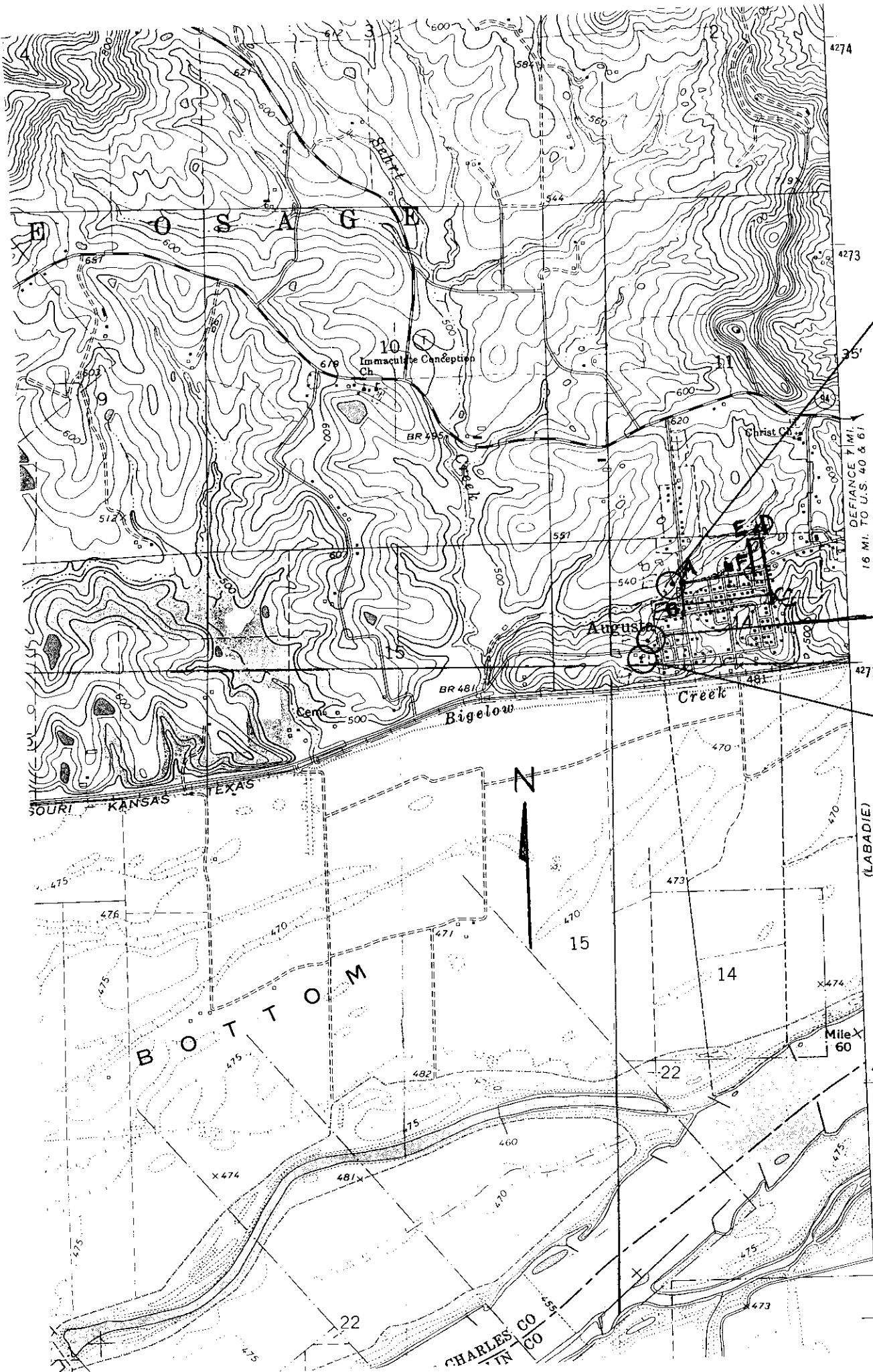


5625

5626



(23)



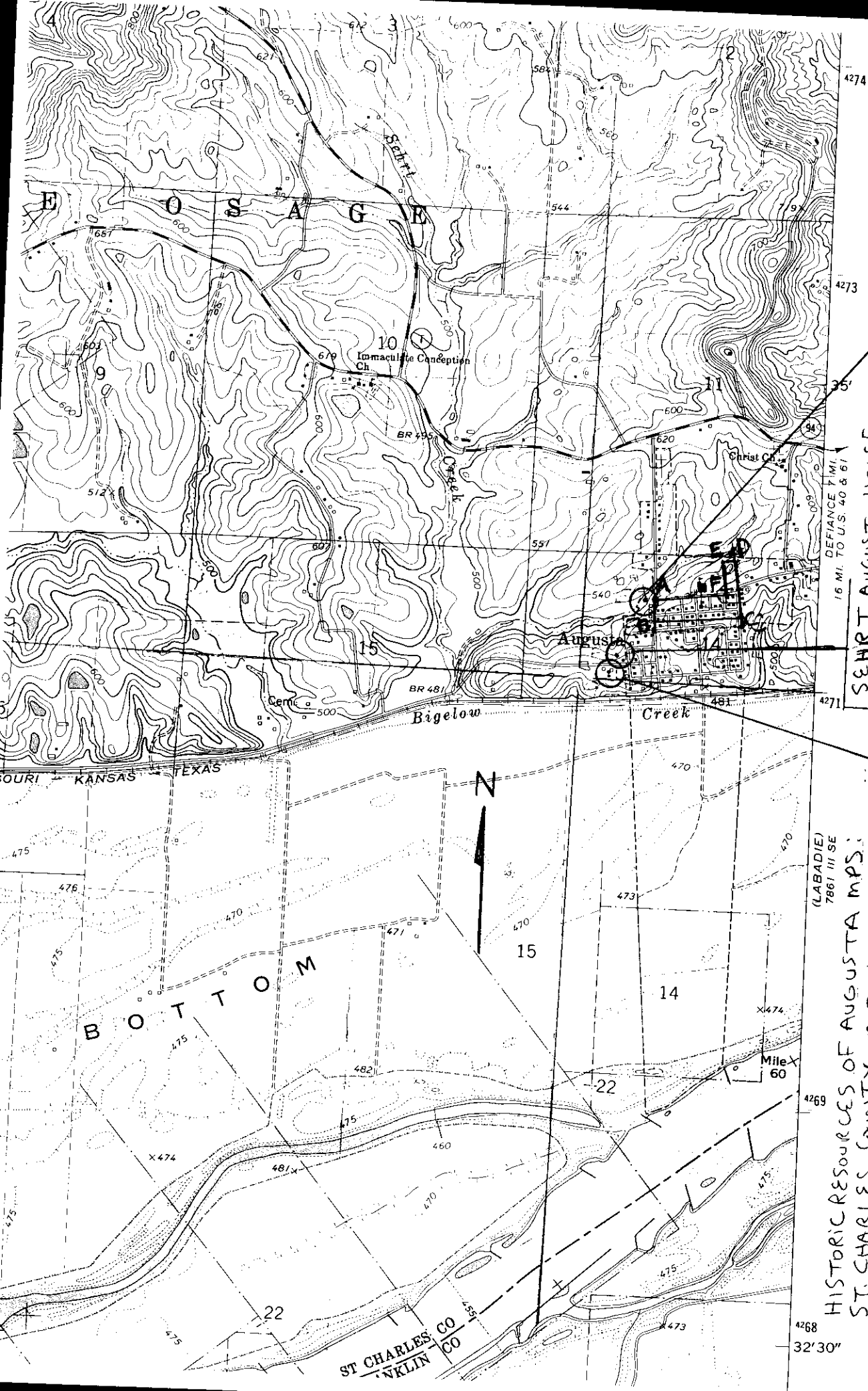
HAROLD-KNOERNSHILD FARMSTEAD  
H.D., 199 JACKSON ST, AUGUSTA,  
ST. CHARLES COUNTY, MO  
15/684300/4271385

SEHRT, AUGUST, HOUSE  
275 WEBSTER ST.  
AUGUSTA, ST. CHARLES  
COUNTY, MO  
15/684180/4271120

MT. PLEASANT  
WINERY H.D.  
5634 HIGH  
AUGUSTA, ST. CHARLES COUNTY, MO  
15/684140/4271040

HISTORIC RESOURCES OF AUGUSTA, MO  
ST. CHARLES COUNTY, MO

WALNUT STREET H.D.  
ST. CHARLES COUNTY, MO  
A: 15/684350/4271390  
B: 15/684350/4271285  
C: 15/684760/4271330  
D: 15/684720/4271600



HAROLD - KNOERNSHILD FARMSTEAD  
H.D., 199 JACKSON ST, AUGUSTA,  
ST. CHARLES COUNTY, MO  
15/684300/4271385

SEHRT, AUGUST, HOUSE  
275 WEBSTER ST.  
AUGUSTA, ST. CHARLES  
COUNTY, MO  
15/684180/4271120

MT. PLEASANT  
WINERY H.D.  
5634 HIGH  
AUGUSTA, ST. CHARLES COUNTY, MO  
15/684140/4271040

HISTORIC RESOURCES OF AUGUSTA MPS:  
ST. CHARLES COUNTY, MO

WALNUT STREET H.D.  
ST. CHARLES COUNTY, MO  
A: 15/684350/4271390  
B: 15/684350/4271285  
C: 15/684760/4271330  
D: 15/684720/4271600  
E: 15/684660/4271590  
F: 15/684680/4271420



- 1) AUGUST SEHRT HOUSE
- 2) AUGUSTA, MO
- 3) MARY STIRITZ
- 4) DEC. 1993
- 5) MO DEPT. NATURAL RESOURCES
- 6) East (primary) + south elevs.  
CAMERA facing NW
- 7) #1



- 1) AUGUST SEHRT HOUSE
- 2) AUGUSTA, MO
- 3) MARY STIRITZ
- 4) DEC. 1993
- 5) MO DEPT NATURAL RESOURCES
- 6) West (rear) + south elev's,  
camera facing NE
- 7) # 2







- 1) August SEHRT House
- 2) Augusta, MO
- 3) MARY STIRITZ
- 4) MARCH, 1999
- 5) MO Dept Natural Resources
- 6) Interior, center hall  
camera facing west
- 7) #3

