

STATE PARK:
1,011 ACRES

OZARK MOUNTAIN STATE PARK

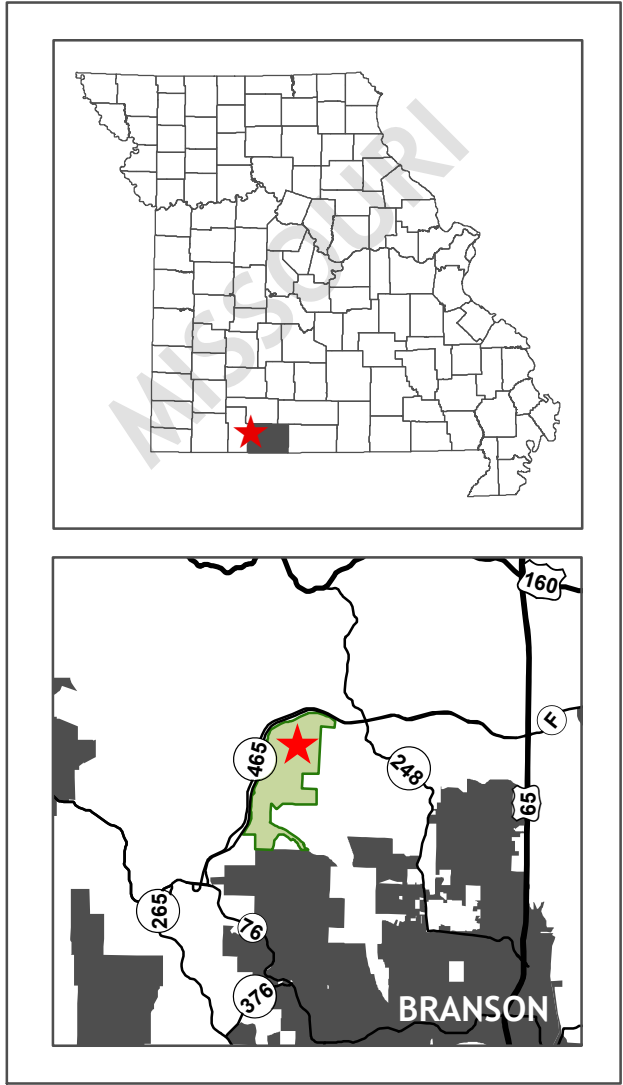
Projected Coordinate System:
NAD 1983, UTM Zone 15N
Contour Interval: 20 Feet
Absolute Scale: 1:6,500

SITE ANALYSIS

0 0.05 0.1 0.2 0.3 0.4 Miles

Area	Water	Other
Preservation Area	Pond	MDC Land
Land Cover	Featured Stream	Structure
Glade	Stream	Sawmill Site
Pasture		Highway
Riparian Corridor		Road
		Railroad
		Contour

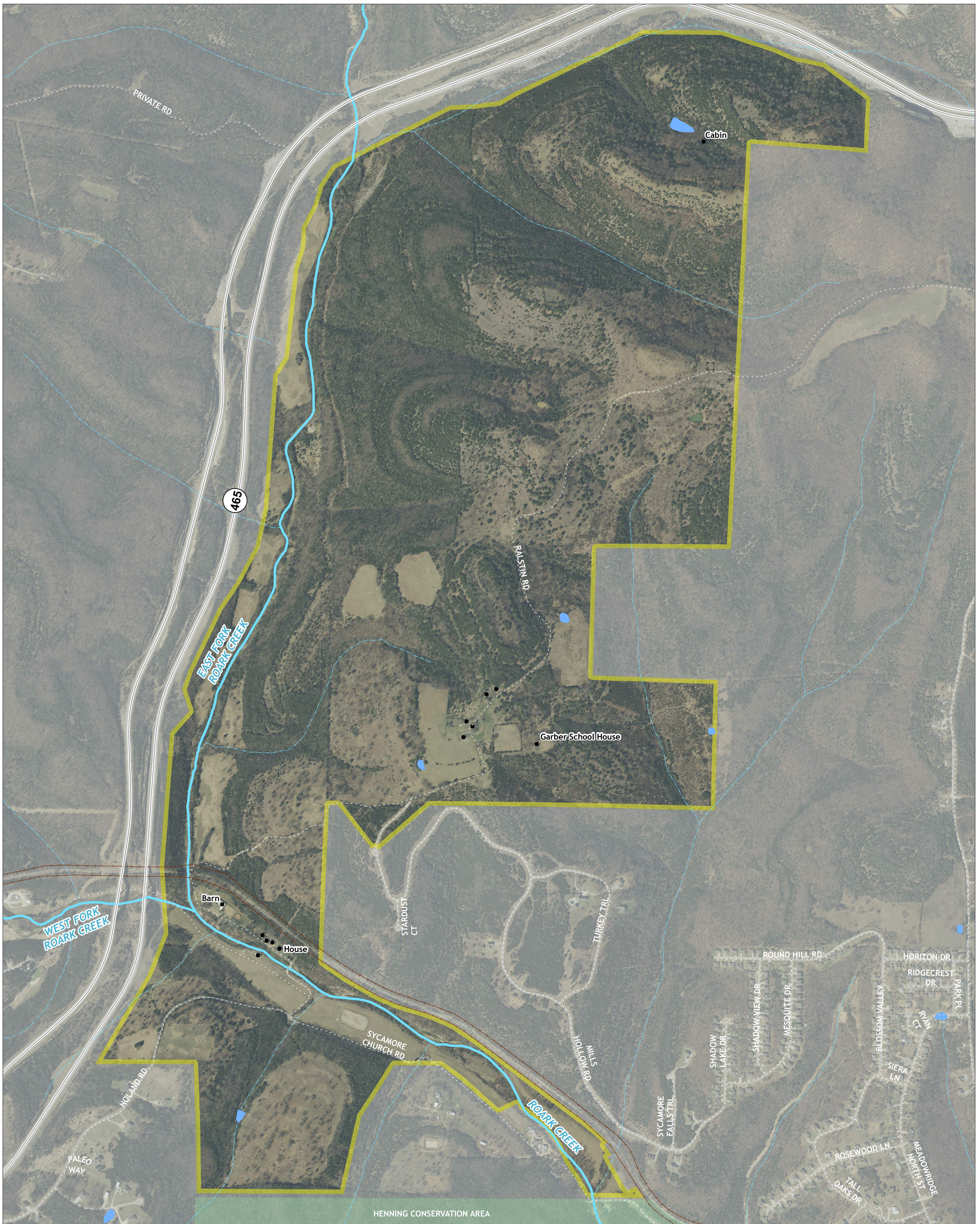
PUBLIC MEETING 6/27/2019



MISSOURI DEPARTMENT OF NATURAL RESOURCES

MISSOURI STATE PARKS

Although the data in this data set have been compiled by the Missouri Department of Natural Resources, no warranty, expressed or implied, is made by the Department as to the accuracy of the data and related materials. The act of distribution shall not constitute any such warranty, and no responsibility is assumed by the Department in the use of these data or related materials.



OZARK MOUNTAIN STATE PARK

Projected Coordinate System:
NAD 1983, UTM Zone 15N
Contour Interval: 20 Feet
Absolute Scale: 1:6,500



AERIAL IMAGERY

Boundary

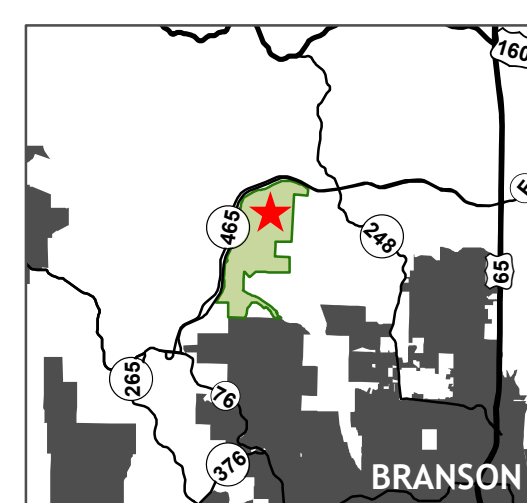
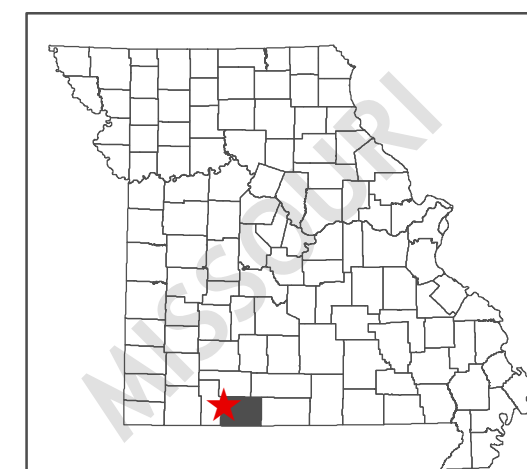
Ozark Mountain State Park

Water

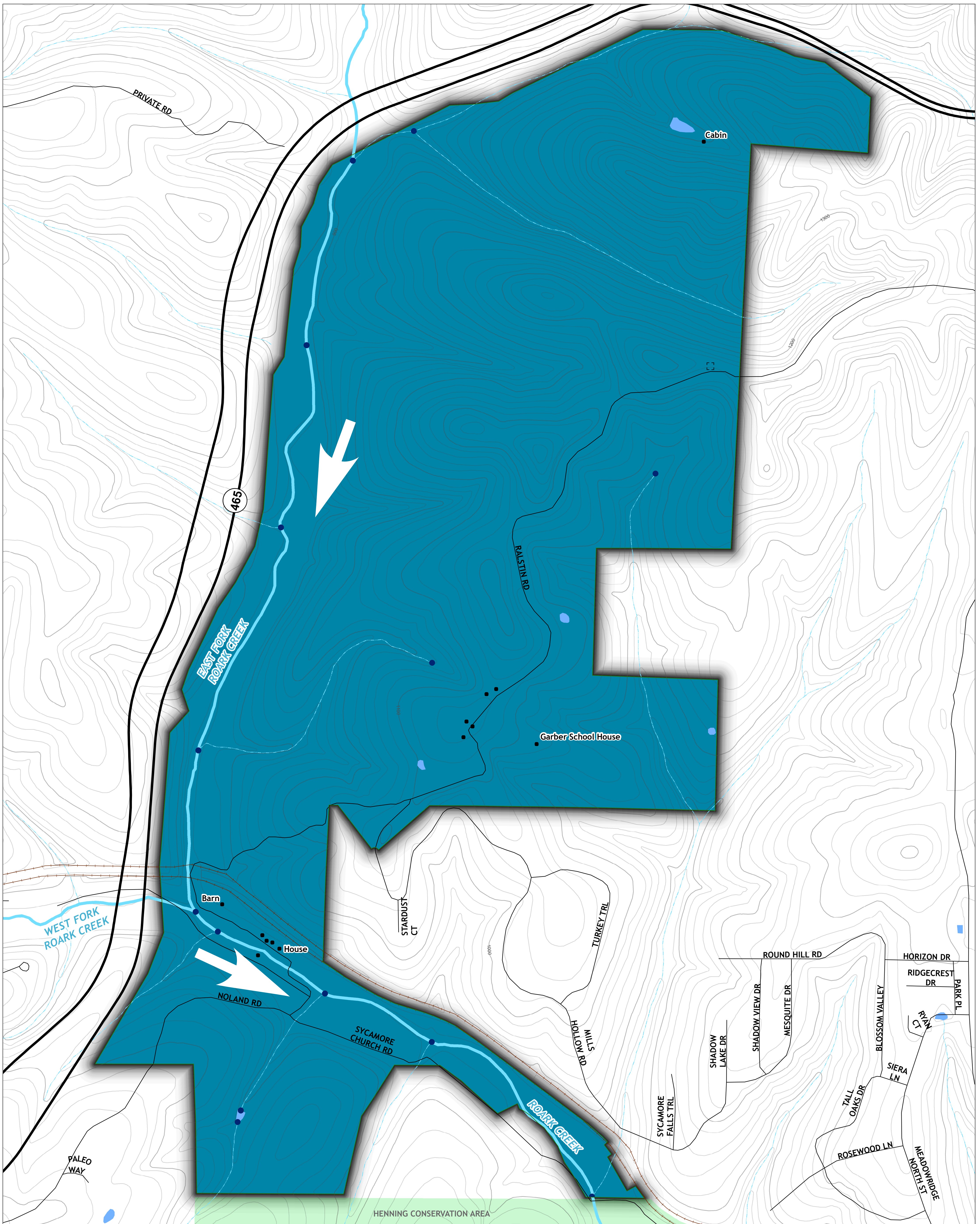
- Featured Stream
- Stream
- Pond

Other

- MDC Land
- Structure
- Sawmill Site
- Highway
- Road
- Railroad



Although the data in this data set have been compiled by the Missouri Department of Natural Resources, no warranty, expressed or implied, is made by the Department as to the accuracy of the data and related materials. The act of distribution shall not constitute any such warranty, and no responsibility is assumed by the Department in the use of these data or related materials.



OZARK MOUNTAIN STATE PARK

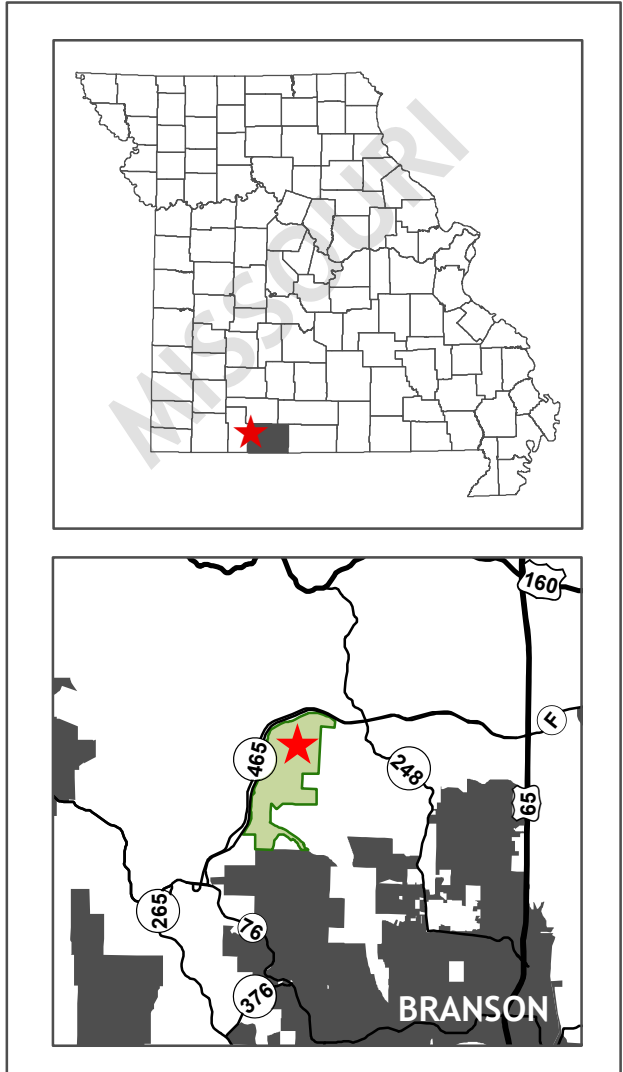
Projected Coordinate System:
NAD 1983, UTM Zone 15N
Contour Interval: 20 Feet
Absolute Scale: 1:6,500

HYDROLOGY

NORTH

Watershed	Lake Taneycomo-White River	Other	MDC Land
Water Features	Featured Stream	Structure	Sawmill Site
	Stream	Highway	Road
	Pond	Railroad	Contour
	Hydro Net Junction		
	Direction of Water Flow		

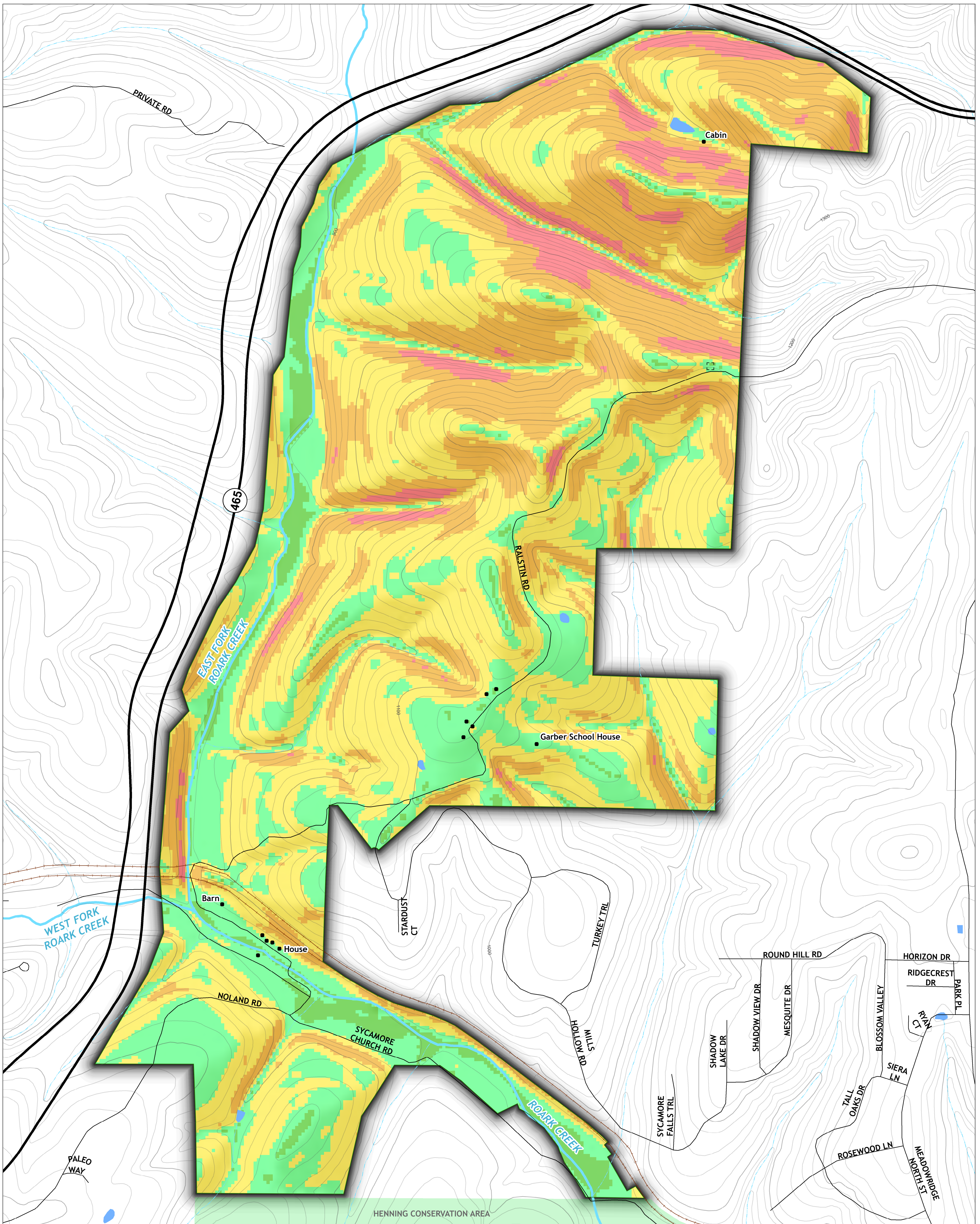
PUBLIC MEETING 6/27/2019



MISSOURI DEPARTMENT OF NATURAL RESOURCES

MISSOURI STATE PARKS

Although the data in this data set have been compiled by the Missouri Department of Natural Resources, no warranty, expressed or implied, is made by the Department as to the accuracy of the data and related materials. The act of distribution shall not constitute any such warranty, and no responsibility is assumed by the Department in the use of these data or related materials.



OZARK MOUNTAIN STATE PARK

Projected Coordinate System:
NAD 1983, UTM Zone 15N
Contour Interval: 20 Feet
Absolute Scale: 1:6,500



0 0.05 0.1 0.2 0.3 0.4 Miles

SLOPE

Slope

- 0 - 2%
- 3 - 8%
- 9 - 15%
- 16 - 23%
- 24% +

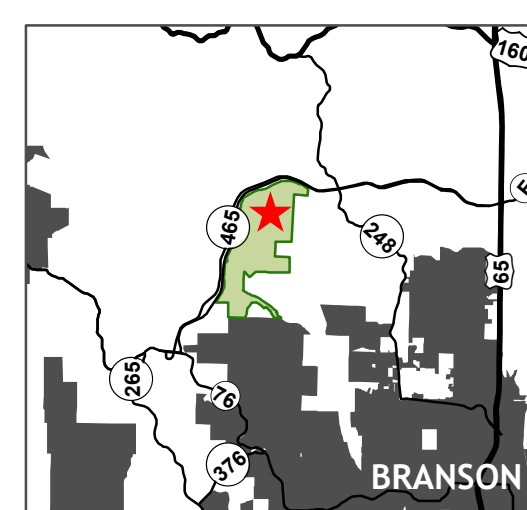
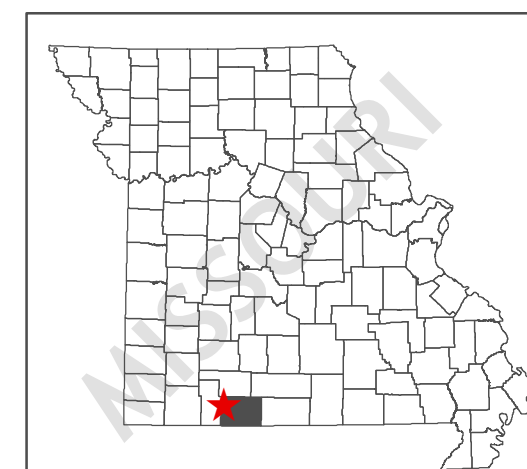
Water

- Featured Stream
- Stream
- Pond

Other

- MDC Land

- Structure
- Sawmill Site
- Highway
- Road
- Railroad
- Contour



Although the data in this data set have been compiled by the Missouri Department of Natural Resources, no warranty, expressed or implied, is made by the Department as to the accuracy of the data and related materials. The act of distribution shall not constitute any such warranty, and no responsibility is assumed by the Department in the use of these data or related materials.