

United States Department of the Interior
National Park Service

National Register of Historic Places Registration Form

1 Name of Property

historic name International Shoe Company Building

other names/site number n/a

2 Location

street & number 160 North Main Street [n/a] not for publication

city or town St. Clair [n/a] vicinity

state Missouri code MO county Franklin code 071 zip code 63077

3 State/Federal Agency Certification

As the designated authority under the National Historic Preservation Act, as amended, I hereby certify that this
[X] nomination [] request for determination of eligibility meets the documentation standards for registering properties in the
National Register of Historic Places and meets the procedural and professional requirements set forth in 36 CFR Part 60. In
my opinion, the property [X] meets [] does not meet the National Register criteria. I recommend that this property be
considered significant [] nationally [] statewide [X] locally.
(See continuation sheet for additional comments [].)

Claire F. Blackwell
Signature of certifying official/Title Claire F. Blackwell/Deputy SHPO

24 February 1994
Date

Missouri Department of Natural Resources
State or Federal agency and bureau

In my opinion, the property [] meets [] does not meet the National Register criteria.
(See continuation sheet for additional comments [].)

Signature of certifying official/Title

State or Federal agency and bureau

4 National Park Service Certification

I hereby certify that the property is:

Signature of the Keeper

Date

[] entered in the National Register
See continuation sheet [].

[] determined eligible for the
National Register
See continuation sheet [].

[] determined not eligible for the
National Register.

[] removed from the
National Register

[] other, explain
See continuation sheet [].

5 Classification

Ownership of Property	Category of Property	Number of Resources within Property		
		Contributing	Noncontributing	
<input checked="" type="checkbox"/> private	<input checked="" type="checkbox"/> building(s)	1	0	buildings
<input type="checkbox"/> public-local	<input type="checkbox"/> district			
<input type="checkbox"/> public-State	<input type="checkbox"/> site	0	0	sites
<input type="checkbox"/> public-Federal	<input type="checkbox"/> structure	0	0	structures
	<input type="checkbox"/> object	0	0	objects
		1	0	Total

Name of related multiple property listing.

n/a

Number of contributing resources previously listed in the National Register.

0

6 Function or Use

Historic Function

INDUSTRY/manufacturing facility

Current Functions

COMMERCE/department store

RECREATION AND CULTURE/museum

7 Description

Architectural Classification

OTHER: Early 20th Century Industrial Building

Materials

foundation concrete
walls brick

roof asphalt

other

Narrative Description

(Describe the historic and current condition of the property on one or more continuation sheets.)

8 Statement of Significance

Applicable National Register Criteria

☒ **A** Property is associated with events that have made a significant contribution to the broad patterns of our history

☐ **B** Property is associated with the lives of persons significant in our past.

☐ **C** Property embodies the distinctive characteristics of a type, period, or method of construction or represents the work of a master, or possesses high artistic values, or represents a significant and distinguishable entity whose components lack individual distinction.

☐ **D** Property has yielded, or is likely to yield, information important in prehistory or history.

Criteria Considerations

Property is:

☐ **A** owned by a religious institution or used for religious purposes.

☐ **B** removed from its original location.

☐ **C** a birthplace or grave.

☐ **D** a cemetery.

☐ **E** a reconstructed building, object, or structure.

☐ **F** a commemorative property.

☐ **G** less than 50 years of age or achieved significance within the past 50 years.

Narrative Statement of Significance

(Explain the significance of the property on one or more continuation sheets.)

9 Major Bibliographic References

Bibliography

(Cite the books, articles and other sources used in preparing this form on one or more continuation sheets.)

Previous documentation on file (NPS):

☐ preliminary determination of individual listing (36 CFR 67) has been requested

☐ previously listed in the National Register

☐ previously determined eligible by the National Register

☐ designated a National Historic Landmark

☐ recorded by Historic American Buildings Survey

☐ recorded by Historic American Engineering Record

Areas of Significance

INDUSTRY

Periods of Significance

1922-1942

Significant Dates

n/a

Significant Person(s)

n/a

Cultural Affiliation

n/a

Architect/Builder

unknown

Primary location of additional data:

☒ State Historic Preservation Office

☐ Other State Agency

☐ Federal Agency

☐ Local Government

☐ University

☐ Other:

Name of repository: _____

10 Geographical Data

Acreage of Property less than one acre

UTM References

A. Zone	Easting	Northing	B. Zone	Easting	Northing
15	676500	4246230			
C. Zone	Easting	Northing	D. Zone	Easting	Northing

[] See continuation sheet

Verbal Boundary Description

(Describe the boundaries of the property on a continuation sheet.)

Boundary Justification

(Explain why the boundaries were selected on a continuation sheet.)

11 Form Prepared By

name/title see continuation sheet

organization _____ date _____

street & number _____ telephone _____

city or town _____ state _____ zip code _____

Additional Documentation

Submit the following items with the completed form:

Continuation Sheets

Maps

A USGS map (7.5 or 15 minute series) indicating the property's location.

A Sketch map for historic districts and properties having large acreage or numerous resources.

Photographs

Representative black and white photographs of the property.

Additional Items

(Check with the SHPO or FOP for any additional items)

Property Owner

(Complete this item at the request of SHPO or FOP.)

name John O. Roberts

street & number 2186 Fair Oaks telephone 314/629-3199

city or town St. Clair state Missouri zip code 63077

United States Department of the Interior
National Park Service

NATIONAL REGISTER OF HISTORIC PLACES
CONTINUATION SHEET

Section 7 Page 1

International Shoe Company Building
Franklin County, MO

Summary: The International Shoe Company Building, located at 160 N. Main Street, St. Clair, Franklin County, is a three-story, irregular shaped building with a flat asphalt roof. Although constructed at one time, the building consists of three sections: a long, rectangular section which extends east-west forms the northernmost section; the central section housed the main entrance and offices; and a third section extends from the southeast elevation of this central section. A four-story elevator tower is attached to the front (west) elevation. The building was constructed in 1922. Second and third floors were added onto the original one floor section of the southeast (rear) portion of the building in 1939. The extreme southeastern section, which housed the heating plant, remained one-story. The load bearing brick walls are laid in a common bond variant and rest on a cast concrete foundation. Despite the addition of a one-story, three-bay galvanized metal loading dock in 1982 on the south elevation of the northern section, the International Shoe Company Building retains sufficient physical characteristics to convey integrity of workmanship, materials, and design, in addition to its integrity of location and setting.

Narrative: The facade, or west elevation, consists of a central section, which houses the main entrance, stairwell, offices, restrooms and hallways which connect to the other sections of the building. The northernmost portion of the building is a long rectangular section which measures 46 feet by 150 feet and extends 58 feet past the facade to the street. This north section houses the elevator shaft, the present loading dock area which is constructed of uninsulated galvanized metal, and fourteen first-floor, symmetrically arranged bays. There were originally seventeen bays, but three were eliminated with the construction of the uninsulated, galvanized metal loading dock in 1982 (photo #1).

On the second and third floors, the original seventeen bays are still intact and the fenestration is identical to that of the first floor. On all three floors, each bay is filled by three six-over-six, double-hung sash, except on the east and west walls where fenestration consists of single openings of six-over-six double-hung sash (photo #5). Additional illumination is provided on the third floor through three skylights, each measuring 14 feet by 28 feet, of single-hung sash (photo #6 and floor plan 2). Brick pilasters on the exterior rise from the cast concrete foundation to the roof, marking the location of the internal bays on both sections of the north and south elevations (photos #2 and #3).

On each floor, parallel hallways connect the three sections of the building (see floor plans). The westernmost hallway on the first floor leads from the front door, past the stairwell and the office to the section of the north elevation. The easternmost hallway runs from the north section, past restrooms along the back side of the office to a section of the building on the south-east elevation. (photo #7, floor plan 1). The office area is L-shaped and consists of approximately 800 square feet. It has a one-stool bathroom in the rear portion of the room. The front portion is walled off from the front hallway with a series of six sealed windowed doors and one operating windowed door. Above these are single opening windows, three of six panes. A sliding metal fire door in the rear of the office connects to the

United States Department of the Interior
National Park Service

NATIONAL REGISTER OF HISTORIC PLACES
CONTINUATION SHEET

Section 7 Page 2

International Shoe Company Building
Franklin County, MO

South, East elevation. Similar doors segregate all sections from each other throughout the entire building.

Originally the southeast section of the building was one-story, but a second story was added in 1939. In the southwest corner of the room, a single entry truck loading door and dock were also added at the time. Prior to that, shipping was mainly done from the room in the basement directly below this area, which was adjacent to a spur railroad track. Some items were directly loaded on freight cars from this first floor room. A trap door 31"x 38" is located in the east wall of this section. A chute was attached to this to which boxes would be slid down into the interior of freight cars. Unlike the rest of the building, steel I-beams support the upper floors. Fenestration on the south and east walls, on the second and third floors, is by bays with three six-over-six, double-hung sash. On the west and north walls, it consists of single openings of six-over-six, double-hung sash. On the third floor, there is an 18' x 18' skylight of single-hung sash (floor plan 2).

The basement floor of the shoe factory is cast concrete while all upper floors are maple. Wooden beams support the upper floors in all areas except the east-south section, which has steel I-beams. Fenestration in the basement is mostly single opening six-over-six, double-hung sash. The floor layout of the basement duplicates that of the upper floor with one exception - on the extreme southern exposure there is a 15 feet by 39 feet room attached which houses the heating plant - originally a wood furnace, later replaced by an oil, hot water boiler system. The ceiling in this room is approximately 25 feet high to accommodate heating and exhaust systems. Fenestration in the room is twelve-over-twelve, double-hung sash, sixteen feet above floor level.

All machinery has been removed from the building; however, the pulley belts for machinery remain in the ceiling of the first floor of the north elevation (photo #8). Three Modine heaters used originally for oil heating remain in place throughout the entire building. Presently the first floor is heated by forced air natural gas furnaces and preparation has been made to extend this type system to other floors as they are occupied. Exhaust fans for the spraying booths remain on the third floor of the northern section.

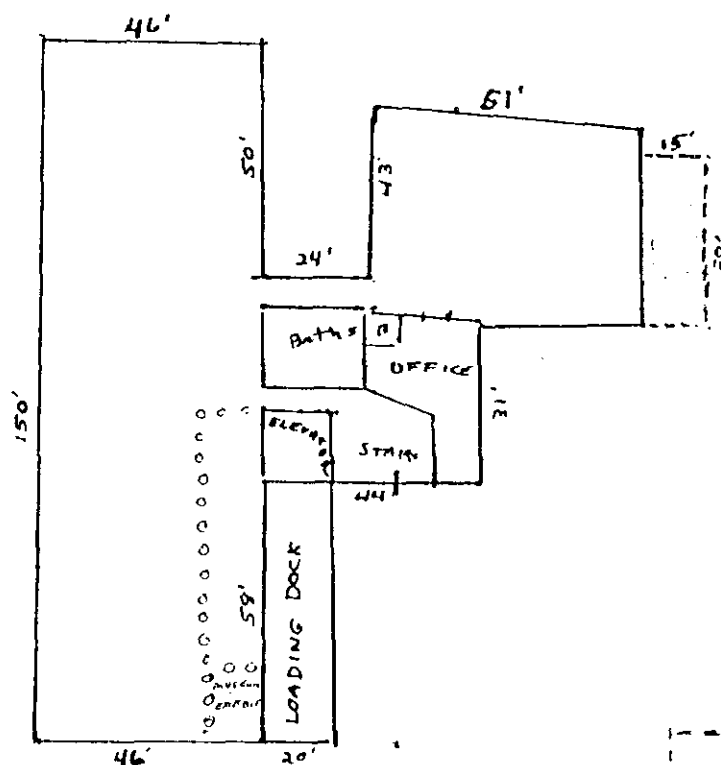
The only interior physical change in the building is an insulated plasterboard wall, 58 feet long by 15 feet wide, in the northern section which segregates the elevator shaft and loading dock area from the main room (floor plan 1). It was built in 1991 to protect the room from the variances in outside temperatures during the year.

A display of artifacts from the International Shoe Company is on the first floor of the north section on the west wall and is under the sponsorship of the St. Clair Historical Museum (photo #9).

NATIONAL REGISTER OF HISTORIC PLACES CONTINUATION SHEET

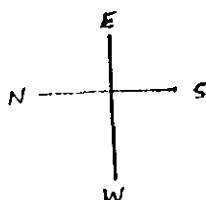
International Shoe Company Building
Franklin County, MO

INTERNATIONAL SHOE FACTORY - ST CLAIR, MO.
1ST FLOOR



TOP OF
FURNACE ROOM

00000
0
60000
INSULATED PLASTERBOARD
WALL



United States Department of the Interior
National Park Service

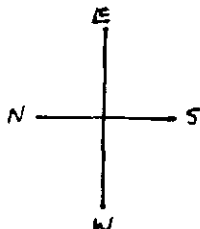
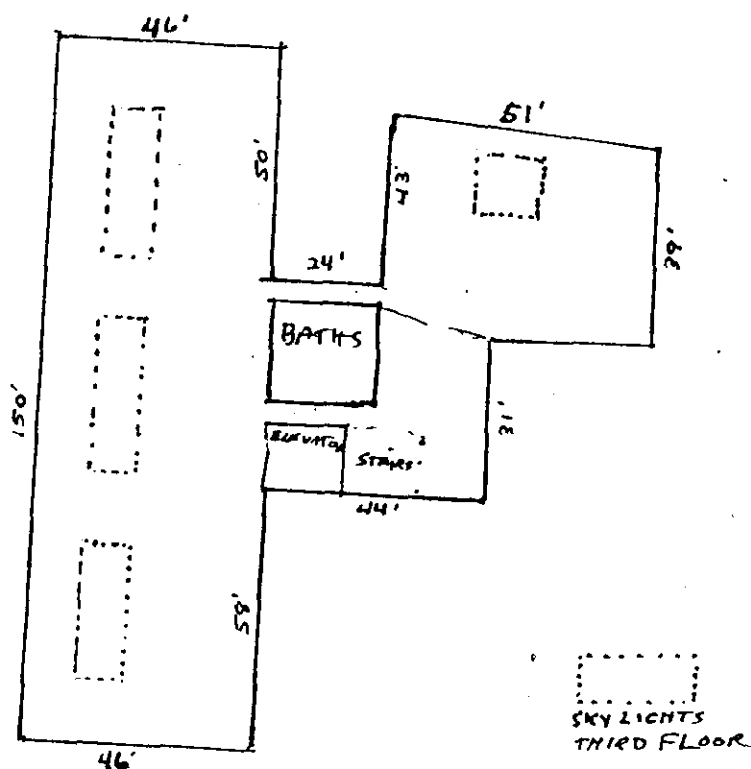
**NATIONAL REGISTER OF HISTORIC PLACES
CONTINUATION SHEET**

Section 7 Page 4

International Shoe Company Building
Franklin County, MO

FLOOR PLAN 2.

INTERNATIONAL SHOE FACTORY - ST. CLAIR, MO.
2ND AND 3RD FLOORS



United States Department of the Interior
National Park Service

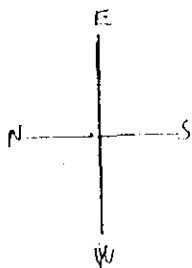
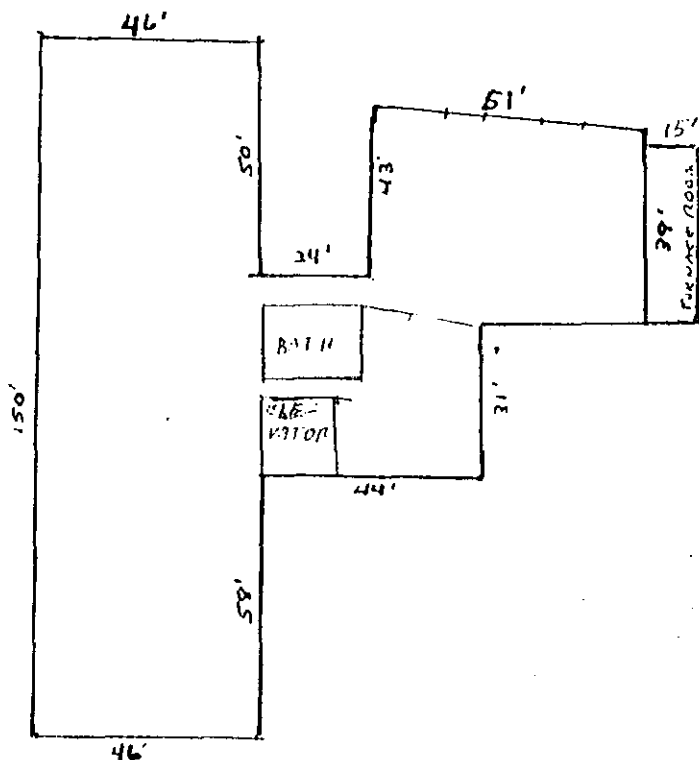
NATIONAL REGISTER OF HISTORIC PLACES
CONTINUATION SHEET

Section 7 Page 5

International Shoe Company Building
Franklin County, MO

FLOOR PLAN 3

INTERNATIONAL SHOE COMPANY - ST CLAIR, MO.
BASEMENT



United States Department of the Interior
National Park Service

NATIONAL REGISTER OF HISTORIC PLACES
CONTINUATION SHEET

Section 8 Page 6

International Shoe Company Building
Franklin County, MO

Summary: The International Shoe Company Building, 160 N. Main Street, St. Clair, Franklin County, is significant under Criterion A in the area of Industry. Constructed in 1921-1922, International's St. Clair plant was the town's largest employer. The International Shoe Company Building represents the efforts of St. Clair to attract the first major industry to their town. Because of their success in this endeavor, the population of St. Clair increased from 410 in 1920 to 1,410 in 1930.¹ The International Shoe Company Building also represents the importance of the shoe industry to Missouri's economy, as well as the migration of the originally St. Louis based industry to outstate Missouri after 1900. One of forty-four plants operated by International in Missouri, the significance of the building extends from 1922, when it was constructed, to 1942, the onset of World War II when the importance of the single industry employer declined in the town.

Narrative: Since 1860, the boot and shoe industry had a major impact in Missouri's industrial development. In that year, the industry ranked fourth in the value of goods manufactured in the state. In 1890, however, extensive development in the boot and shoe industry began and large amounts of capital were invested.² Over the next ten years the amount of capital required for the production on one hundred dollars of product declined by over one-half, from \$76.70 in 1890 to \$37.18 in 1900. During the same period of time, the value of products manufactured increased \$5,412,298, while capital required increased only \$471,064. In 1909, the fifty-nine establishments which manufactured boots, shoes, cut stock, and findings employed 17,396 workers, more than any other Missouri industry. The industry's pronounced growth was also reflected in its national ranking. In 1899, the Missouri boot and shoe industry ranked eighth in the country. By 1904, it was fourth, and by 1909, it ranked second in the country.³

From its introduction in Missouri, the boot and shoe industry was centered in St. Louis. In 1889, twenty-four factories, or 82.8 percent of the total factories in the state, were located in St. Louis.⁴ In 1900, the boot and shoe manufacturing establishments in St. Louis accounted for 78 percent of the value of products manufactured in that industry in the entire state, and, by

¹Dorothy O. Moore, The Story of St. Clair (N.p., 1976), p. 34.

²U.S. Department of Commerce, Census Office, Twelfth Census The United States, Taken in the Year 1900: Manufactures, part 3, Special Reports in Selected Industries. p 753.

³Ibid., pp 745 and 753-754; idem., Bureau of Census, Thirteenth Census of the United States, Taken in the Year 1910, Volume 9, Manufactures 1909. Reports by States With Statistics for Principal Cities., pp 636, 644-45 and 653.

⁴Carl Wilburn McGuire, "Economics of the Community Bonus with Special Reference to the Missouri Boot and Shoe Industry" (Ph.D. dissertation, University of Missouri, 1939), p. 32. Of the remaining five factories, four were located in Jefferson City and one in Washington.

United States Department of the Interior
National Park Service

NATIONAL REGISTER OF HISTORIC PLACES
CONTINUATION SHEET

Section 8 Page 7

International Shoe Company Building
Franklin County, MO

1904, St. Louis still retained twenty-two of the thirty-seven boot and shoe factories in the state. As early as 1899, some relocation from St. Louis into the rest of the state and neighboring states had begun. In an effort to obtain cheaper labor, the major moves began after 1906 and continued to increase after World War I. In 1927, only twenty-nine of the sixty-eight factories in the state, or 42.6 percent, were located in St. Louis and only 31.9 percent of the shoes by value were made there. By 1928, the five largest St. Louis shoe companies had established plants in fifty-six small towns within a two hundred mile radius of St. Louis employing over 30,000 workers.⁵

Because of its proximity to St. Louis and the number of people in the area who had experience making shoes, Franklin County was a prime area for early expansion of the St. Louis based industry. Shoes and boots, both of wood and leather, had been made in many homes and shops in the towns of Washington, Krakow and Senate Grove from 1853 on. In 1884, the first shoe factory in the county was established in Washington by John Louis Hake. By 1886, it employed fifteen persons and produced 6,039 pairs of shoes and 784 pairs of boots. It enlarged and continued until about 1898, when H. Hoelscher operated the factory. Large shoe factories were established in Washington in 1907, Union in 1914, and later New Haven, Pacific and St. Clair. In 1925, it was estimated that approximately one thousand persons in Franklin County were employed in these factories.⁶

By 1940, the International Shoe Company, which was headquartered in St. Louis, had the largest capacity of any shoe manufacturer in the world. The firm was created in 1911 with the merger of Peters Shoe Company, which had begun in 1836, and Roberts, Johnson & Rand Shoe Company, founded in 1898. In 1912, International also purchased the Friedman-Shelby Shoe Company. Most of the Missouri-chartered company's properties were originally in the St. Louis area. In 1921, however, it reorganized under a Delaware charter and expanded its operations to the eastern states, acquiring three leather tanneries from a Boston firm and most of the assets of W.H. McElwain Company. The peak production of International Shoe Company was in 1929, when 54,730,685 pairs of shoes were made and sales totaled \$132,110,130.⁷

The International Shoe plant represents the efforts of St. Clair to attract the first major industry to their town. It was common practice to lure industry to outstate communities with bonuses or other privileges. Between

⁵U.S. Department of Commerce, Bureau of Census, Census of Manufactures, 1914, Volume 1; Reports by States With Statistics For Principal Cities and Metropolitan Districts, p. 788; and Rosemary Feurer, "Shoe City, Factory Towns: St. Louis Shoe Companies and the Turbulent Drive for Cheap Rural Labor, 1900-1940", Gateway Heritage 9 (Fall 1988): 5.

⁶Herman Gottlieb Kiel, The Centennial Biographical Directory of Franklin County, Missouri (Washington, D.C., 1925), p. 55.

⁷Horace B. Davis, Shoes: The Workers and the Industry (New York: International Publishers, 1940), pp. 63-64.

United States Department of the Interior
National Park Service

**NATIONAL REGISTER OF HISTORIC PLACES
CONTINUATION SHEET**

Section 8 Page 8

**International Shoe Company Building
Franklin County, MO**

1899 and 1938, for example, International received forty-five bonuses from various communities in the state, including sixteen bonuses between 1919 and 1928, the period in which the St. Clair plant was built. The bonus was often contingent on salary guarantees. In 1920, the citizens of St. Clair raised a total of \$27,500 through the sale of lots, picnics, and other activities, in order to lure the company to their town and offset a portion of the estimated construction cost of \$150,000.⁸ With their success in acquiring the plant, the population of St. Clair increased from 410 in 1920 to 1,410 in 1930.⁹ The St. Clair Shoe Company Building also represents the importance of the shoe industry to Missouri's rural economy. By 1935, International had two factories in its headquarters city of St. Louis with a capacity of 4200 pairs a day, while it operated twenty-four factories in twenty-one outstate towns, with a capacity of 145,960 pairs a day. Eventually, the company operated forty-four plants in the state.¹⁰

In a special census held in 1922, St. Clair was credited with a population of 703, of whom 203 worked for the shoe factory.¹¹ By 1923, 250 employees were hired at an average weekly wage of \$33.00 and the plant was making 2,160 pairs of shoes daily.¹² Over the years, the company consistently hired 325-350 employees, hitting a peak of 415. It was estimated that during the depression years of the 1930's, one out of every three citizens of the town worked continually in the factory.¹³ International operated their St. Clair plant continually from 1922 to 1982. The plant closed briefly in 1956 when it was converted from shoe manufacturing to wood heel manufacturing to supply other International divisions.

The plant was closed in 1982 because of financial difficulties of the parent company, which has since dissolved. From 1982 until 1991 the building was operated as a warehouse and rental property by its owner, Jerry Landing. At the present time it is operated as an antique mall on the first floor by the

⁸McGuire, p. 61; and St. Clair Chronicle, October 8, 1975.

⁹Dorothy O. Moore, The Story of St. Clair (N.p., 1976), p. 34.

¹⁰McGuire, p. 36; and Loren Marshall, former office manager, International Shoe Company, 1961-1975, personal interview, August 12, 1992.

¹¹Kiel, p. 210.

¹²Franklin County Tribune, June 15, 1923, p.1. There seems to be a question on the accuracy of the weekly wage figure of \$33.00. Personal interviews in 1992 with four individuals who began working for the shoe factory when it opened in 1922 refute this figure. In oral interviews with Floyd Bay, Patrick Sullivan, Guy Pierce and Denzil Wilson, all of St. Clair, all are in agreement that their wages in 1922-23 were \$9.00 a week for fifty-four hours.

¹³Floyd Bay, former foreman and union representative with International Shoe Company, 1922-1942, personal interview, January 8, 1992.

United States Department of the Interior
National Park Service

NATIONAL REGISTER OF HISTORIC PLACES
CONTINUATION SHEET

Section 8 Page 9

International Shoe Company Building
Franklin County, MO

new owners, Mr. and Mrs. John O. Roberts. The basement area is leased to another company which manufactures gun cases. There is a display on the first floor, under the auspices of the St. Clair Historical Museum, of various artifacts and photographs of the International Shoe Company during its operation in the building.

The period of significance for the International Shoe Company Building was from 1922 to 1942. In 1939, the continuing importance of the factory was affirmed by an expansion to the building, adding two additional floors to accommodate increasing business. Because of its presence, St. Clair was transformed from a mining, lumbering and marginal agriculture economy into one of manufacturing. During the Great Depression, 1932-1942, steady employment was provided to the people of the area by the International Shoe Company, which helped minimize the economic effects of the time on the populace.

United States Department of the Interior
National Park Service

NATIONAL REGISTER OF HISTORIC PLACES
CONTINUATION SHEET

Section 9 Page 10

International Shoe Company Building
Franklin County, MO

Davis, Horace B. Shoes: The Workers and the Industry. New York: International Publishers, 1940.

Feurer, Rosemary, Shoe City, Factory Towns, St. Louis Shoe Companies and the Turbulent Drive for Rural Labor 1900-1940, St. Louis, MO. Gateway Heritage 1988.

Franklin County Tribune, Union, Missouri. February 27, 1922, June 15, 1923.

Kerr, Gerald W. Market Value Appraisal of the Building, December 14, 1990, n.p. (copy available John O. Roberts).

Kiel, Herman Gottlieb, The Centennial Biographical Directory of Franklin County, Missouri. Washington D.C., Herman Gottlieb Kiel, 1925.

McGuire, Carl Wilburn. Economics of the Community Bonus with Special Reference to the Missouri Boot and Shoe Industry. Ph.D. dissertation, University of Missouri, 1939.

Moore, Dorothy O. The Story of St. Clair, n.p. 1976 (Copy available St. Clair Historical Museum, St. Clair, MO)

St. Clair Chronicle, St. Clair, Missouri, October 8, 1975.

Sanborn Fire Insurance Company Maps, St. Clair, Missouri, 1924.

U.S. Department of Commerce. Bureau of the Census. Census of Manufactures, 1914. Vol 1: Reports by States with Statistics for Principal Cities and Metropolitan Districts.

_____. Twelfth Census of the United States, Taken in the Year 1900: Manufactures. Part 3: Special Reports on Selected Industries.

Personal Interviews:

Barber, Harrell, St. Clair, MO, March 15, 1992; May 15, 1993; June 10, 1993

Bay, Floyd, St. Clair, MO, January 8, 1992

Marshall, Loren, St. Clair, MO, August 15, 1992

Pierce, Guy, St. Clair, MO, March 15, 1992; February 10, 1993

Sullivan, Patrick, St. Clair, MO, March 13, 1992

Wilson, Denzil, St. Clair, MO, February 10, 1993

United States Department of the Interior
National Park Service

**NATIONAL REGISTER OF HISTORIC PLACES
CONTINUATION SHEET**

Section 10,11 Page 11

International Shoe Company Building
Franklin County, MO

10. Geographical Data

Verbal Boundary Description: Lots 24, 25, 26, 27, and 28, G.W. Smith Addition, City of St. Clair, Franklin County, MO.

Boundary Justification: The boundary includes the five city lots which have historically been associated with the nominated property.

11. Form Prepared By

1. John O. Roberts
2186 Fair Oaks
St. Clair, Missouri
314/629-3199
December 27, 1993
Original draft nomination, items 1-11
2. Steven E. Mitchell
National Register Coordinator
Department of Natural Resources
Division of State Parks
Historic Preservation Program
P.O. Box 176
Jefferson City, Missouri 65102
314/751-7800
January 28, 1994
Editor and revisions, items 1-11

7760 1 NE
(UNION)

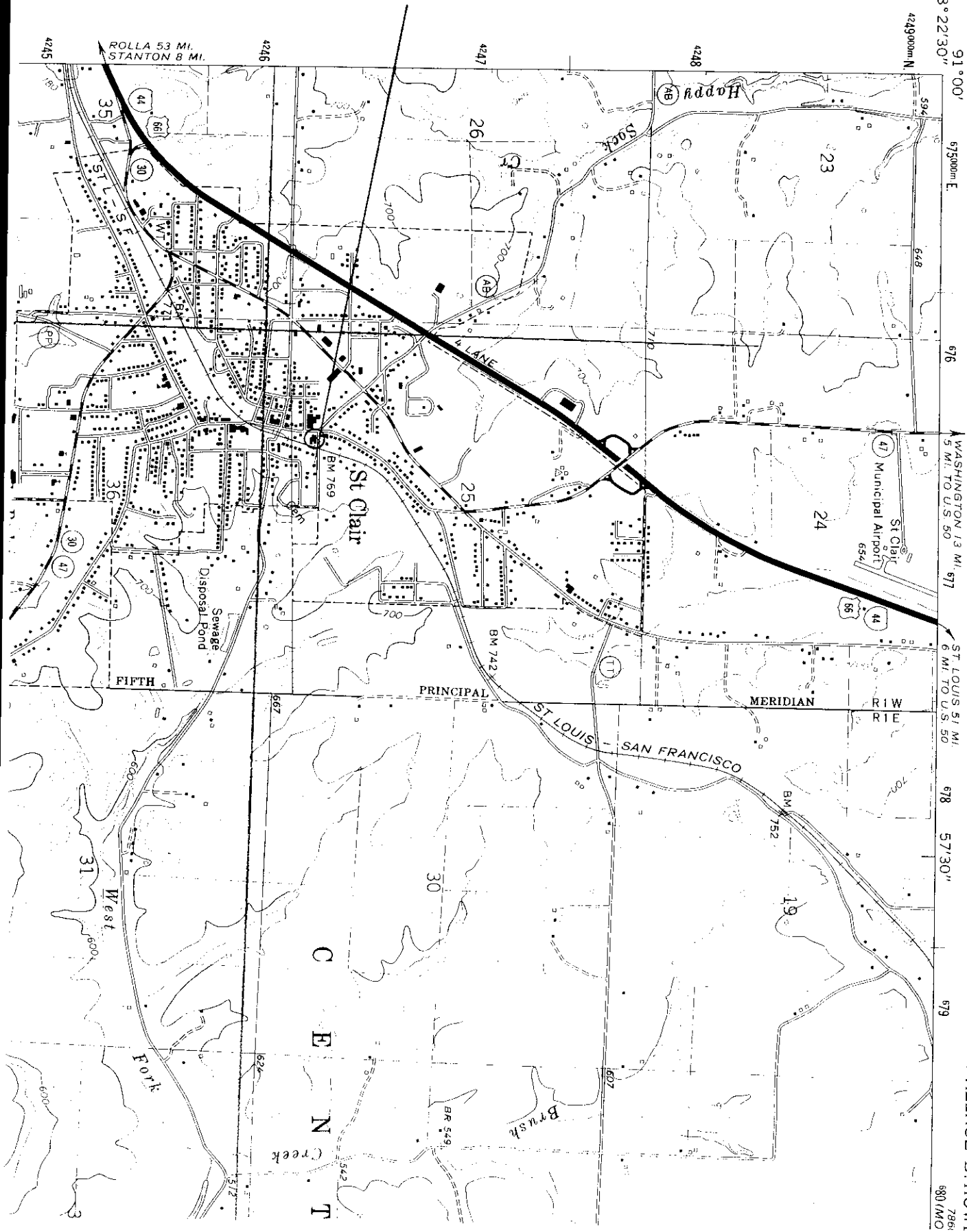
91°00'
38°22'30"

WASHINGTON 13 MI.
5 MI. TO U.S. 50 677

ST. LOUIS 51 MI
6 MI. TO U.S. 50

678 57'30"

679

7861
580 (MO)

#1

Photograph #1
INTERNATIONAL SHOE COMPANY FACTORY
160 N. MAIN ST.
ST. CLAIR, MO 63077

Photographer JAMES H. EVANS

MARCH 20, 1992

NEGATIVES JOHN O. ROBERTS
2186 FAIR OAK
ST. CLAIR MO 63077

FRONT OR WEST ELEVATION
CAMERA FACING EAST



Photograph #2

INTERNATIONAL SHOE COMPANY BUILDING
160 N. MAIN ST.
ST CLAIR, MO 63077

PHOTOGRAPHER JAMES H EUANS
MARCH 20, 1992

NEGATIVE JOHN O ROBERTS
2186 FAIR OAK
ST CLAIR, MO 63077

NORTH AND PART OF WEST ELEVATION
CAMERA FACING SOUTH EAST



Photograph #3

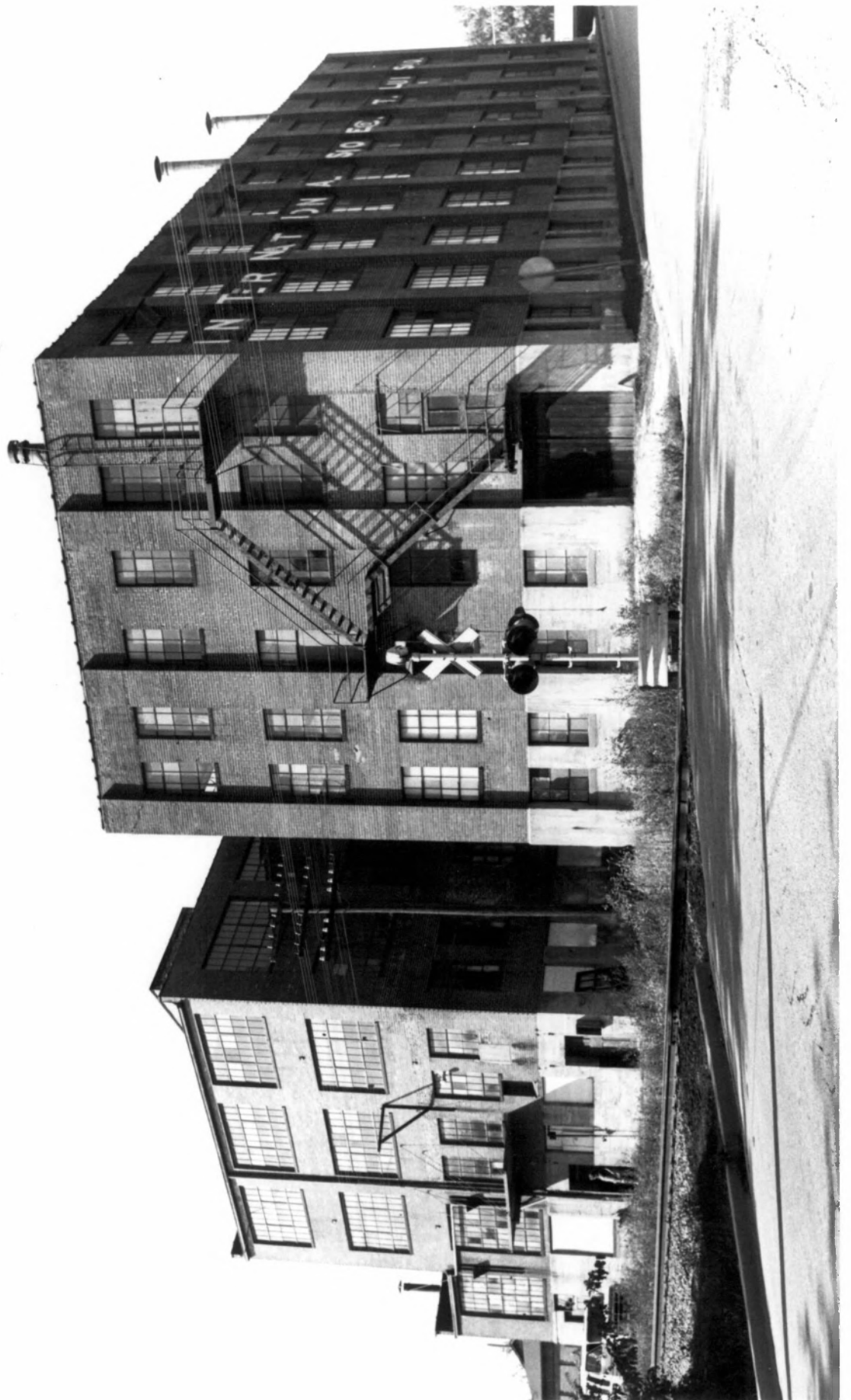
INTERNATIONAL SHOE COMPANY BUILDING

160 N. MAIN ST
ST CLAIR, MO 63077

Photographer JAMES H. EVANS
MARCH 20 1992

NEGATIVE JOHN O ROBERTS
2186 FAIR OAK
ST CLAIR, MO. 63077

EAST ELEVATION
CAMERA FACING SOUTHWEST



Photograph #4

INTERNATIONAL SHOE COMPANY BUILDING
160 N. MAIN ST.
ST CLAIR, MO 63077

Photographer JAMES H. EVANS
MARCH 20 1992

NEGATIVE JOHN G. ROBERTS
2186 FAIR OAK
ST CLAIR, MO 63077

SOUTH ELEVATION
CAMERA FACING NORTH



Photograph # 5

INTERNATIONAL SHOE COMPANY BUILDING
160 N. MAIN ST.
ST CLAIR MO 63077

Photographer JAMES H. EVANS

JULY 10 1992

NEGATIVE JOHN G. ROBERTS
2186 FAIR OAK

ST CLAIR, MO 63077

FIRST FLOOR NORTH SECTION - INTERIOR - SHOWING INSULATED WALLS
THAT SEGREGATE ELEVATOR AND GALVANIZED METAL LOADING DOCK
FROM ROOM

CAMERA FACING WEST



photo 6

Photo No. 6

INTERNATIONAL SAGE COMPANY BUILDING
166 N. MAIN ST
ST CLAIR, MO. 63077

Photographer JAMES EVANS
JULY 10, 1990

NEGATIVE JOHN O. ROBERTS
2188 FAIR OAK
ST CLAIR, MO 63077

SECTION
2ND FLOOR NORTH ELEVATION INTERIOR - SHOWING
WOODEN BEAMS AND MAPLE FLOORING
CAMERA FACING SOUTHEAST
FENESTRATION, ELEVATOR SHAFT



Photo No 7

INTERNATIONAL SHOE COMPANY BUILDING
160 N. MAIN
ST CLAIR, MO 63077

Photographer JAMES HEVANS
July 10 1992

NEGATIVE JOHN O Roberts
2186 FAIR OAK
ST CLAIR, MO 63077

3RD Floor NORTH SECTION SHOWING FENESTRATION ON WALLS
AND SKY LIGHTS

CAMERA FACING EAST - NORTHEAST

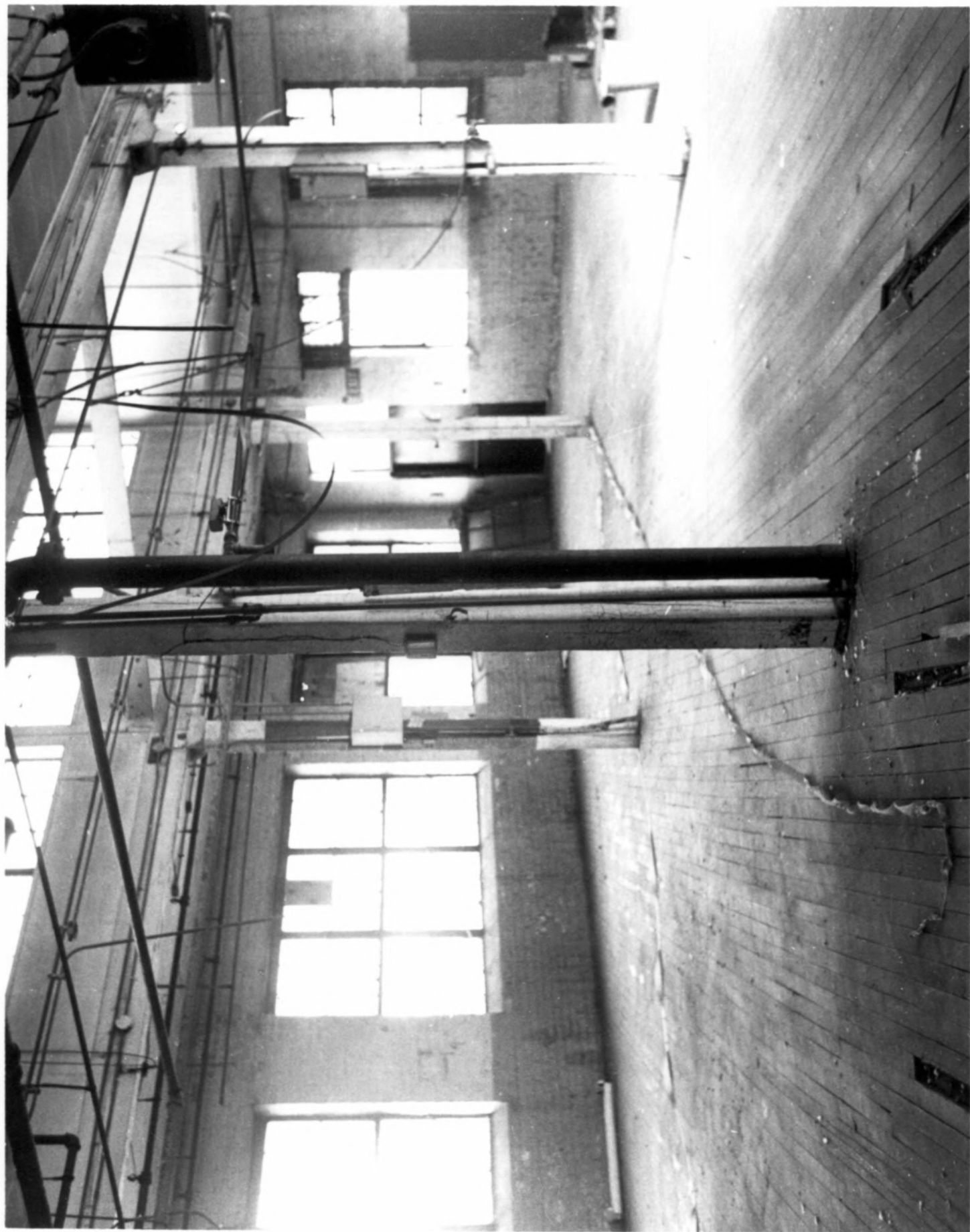


photo No 8

INTERNATIONAL SHOE FACTORY BUILDING
160 N. MAIN
ST CLAIR, MO 63077

Photographer JAMES H EVANS
JULY 10 1992

NEGATIVE JOHN O ROBERTS
2186 FAIR OAK
ST CLAIR MO 63077

EXTERIOR VIEW - NORTH SECTION ROOF SHOWING SKYLIGHT FENESTRATION
CAMERA FACING EAST



Photograph NO 9

INTERNATIONAL SHOE FACTORY BUILDING

160 N. MAIN

ST CLAIR MO 63077

Photographer JAMES H EVANS

JULY 10 1992

NEGATIVE -

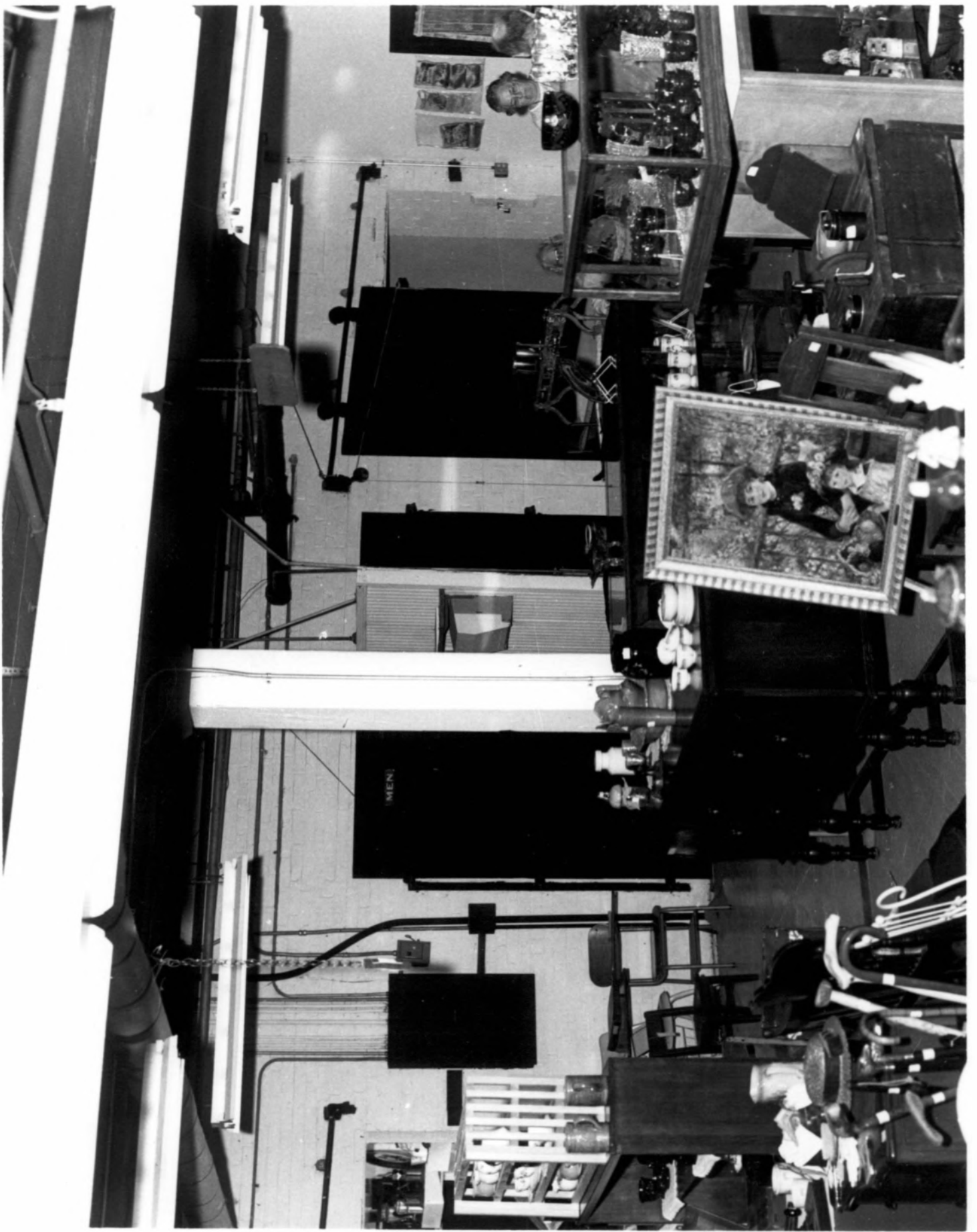
JOHN O ROBERTS

2186 FAIR OAK

ST CLAIR MO 63077

1ST FLOOR INTERIOR NORTH SECTION SHOWING EAST (LEFT) AND WEST (RIGHT)
HALLWAYS

CAMERA FACING SOUTH



Photograph No 10

INTERNATIONAL SHOE FACTORY BUILDING
760 N MAIN ST
ST CLAIR MO 63077

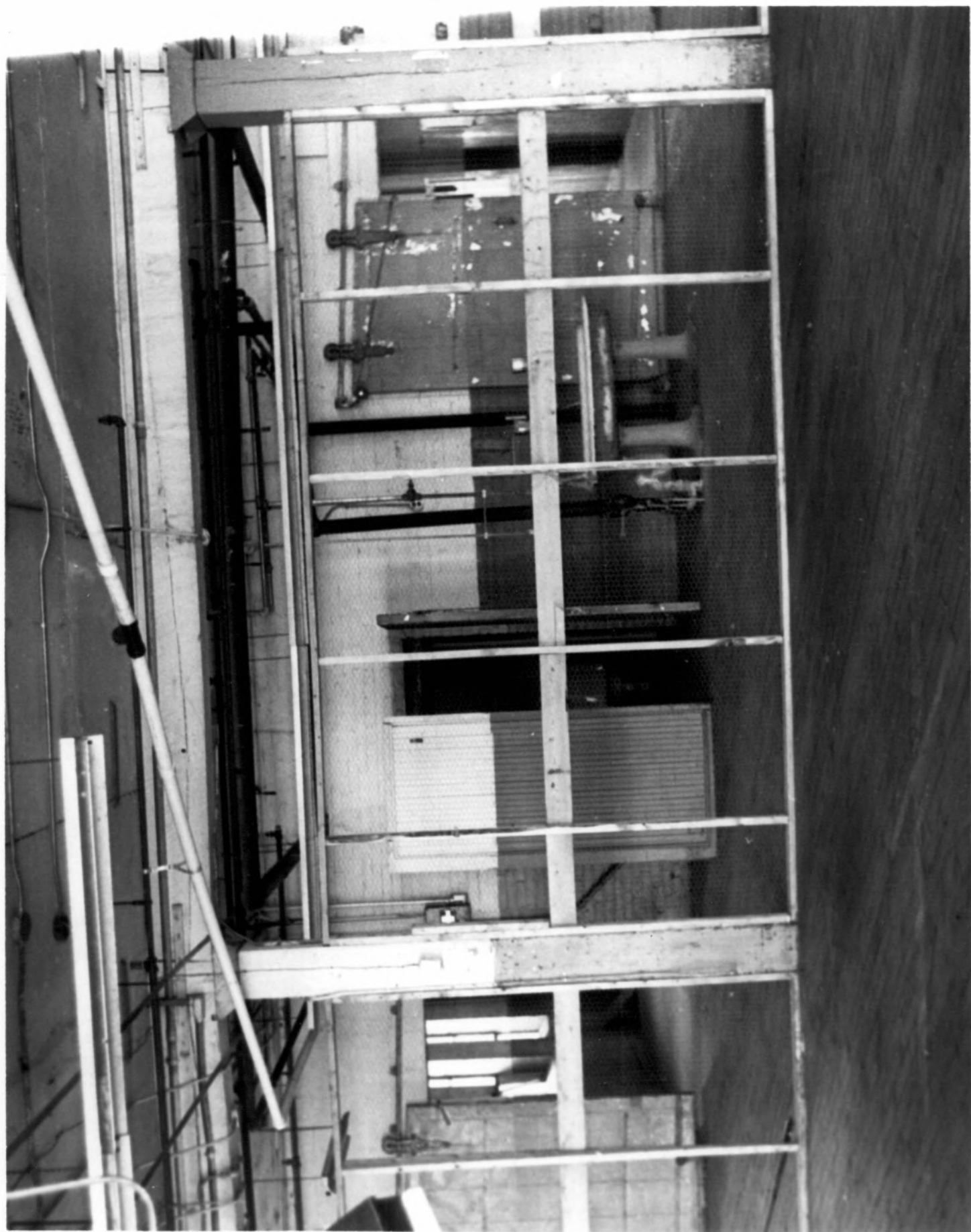
Photographer JAMES HEVANS
July 10, 1992

NEGATIVE JOHN O ROBERTS
2186 FAIR OAK
ST CLAIR MO 63077

EAST (Left) and West (Right) Hallways

2nd Floor Interior North Section

CAMERA FACING SOUTH



Photograph No 11

INTERNATIONAL SHOE FACTORY BUILDING
160 N MAIN ST.
ST CLAIR MO 63077

Photographer JAMES H EVANS
JULY 10, 1992

NEGATIVE JOHN G ROBERTS
2186 FAIR OAK
ST CLAIR MO 63077

FIRST FLOOR INTERIOR - WEST HALLWAY FROM STAIRS SHOWING EXTERIOR
WALLS 6F OFFICE

CAMERA FACING SOUTHEAST



Photograph 12

INTERNATIONAL SHOE FACTORY BUILDING
166 N. MAIN
ST CLAIR MO 63077

Photographer JAMES H EVANS

JULY 10 1982

NEGATIVES JOHN G ROBERTS
2186 FAIR OAK
ST CLAIR MO 63077

FIRST FLOOR INTERIOR OF SOUTHEAST SECTION SHOWING TRAPDOOR USED
PREVIOUSLY FOR LOADING RAILROAD FREIGHT CARS

CAMERA FACING EAST



Photograph No 13

INTERNATIONAL SHOE FACTORY BUILDING

160 N. MAIN ST

ST CLAIR MO 63077

Photographer JAMES HEVANS

JULY 10 1992

NEGATIVE JOHN G ROBERTS

2186 FAIR OAK

ST CLAIR MO 63077

2ND FLOOR INTERIOR OF SOUTHEAST SECTION SHOWING PENETRATION AND
STEEL I BEAM SUPPORTS

CAMERA FACING SOUTH



Photograph No 14

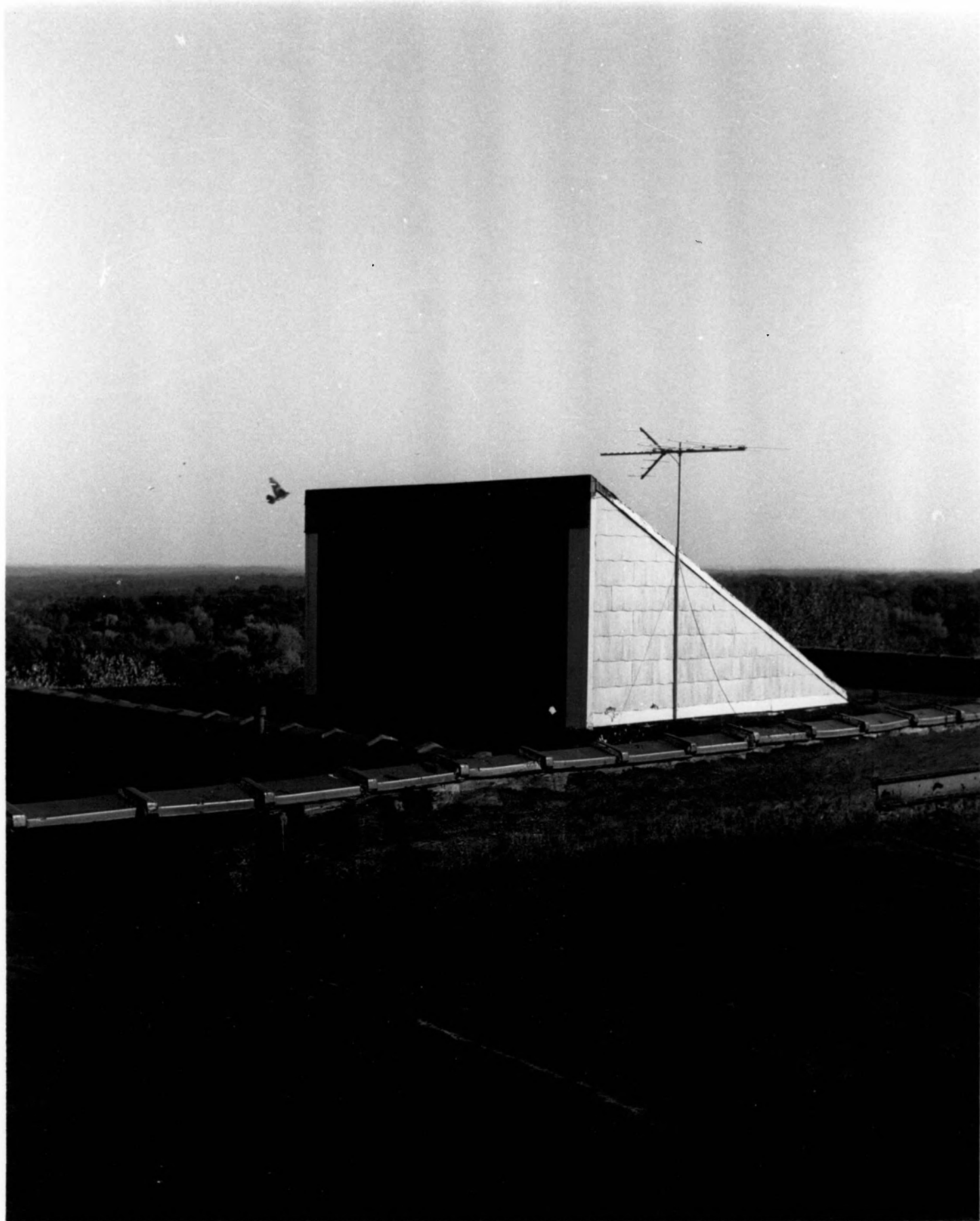
INTERNATIONAL SHOE FACTORY BUILDING
160 N MAIN
ST CLAIR MO 63077

Photographer JAMES H EVANS

JULY 10 1992

NEGATIVES JOHN G ROBERTS
2186 FAIR OAK
ST CLAIR MO 63077

EXTERIOR VIEW SOUTHEAST SECTION OF ROOF SHOWING FENESTRATION FROM SKY LIG
CAMERA FACING EAST



Photograph No 15

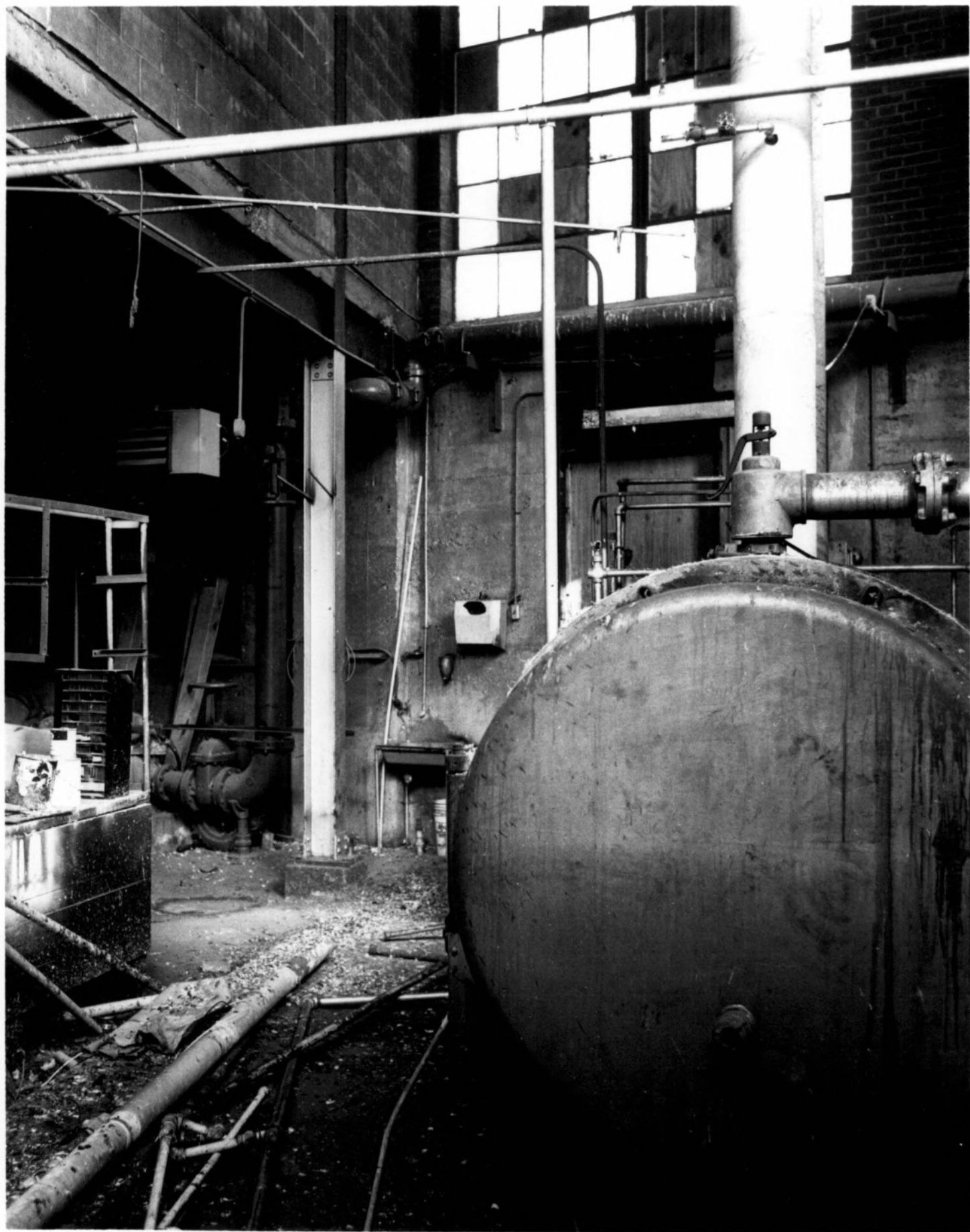
INTERNATIONAL SHOE COMPANY BUILDING
160 N MAIN ST.
ST CLAIR MO 63077

Photographer JAMES HEVANS
JULY 10 1992

NEGATIVE JOHN G ROBERTS
2186 FAIROAK
ST CLAIR MO 63077

INTERIOR VIEW - SOUTH SECTION BASEMENT SHOWING OLD OIL BOILER AND
FENESTRATION

CAMERA FACING EAST



Photograph No. 16

INTERNATIONAL SHOE FACTORY BUILDING
160 N. MAIN ST
STC AIR MO 63077

Photographer JAMES H EVANS
JULY 10 1992

NEGATIVE JOHN B ROBERTS
2186 FAIR OAK
STC AIR MO 63077

FIRST FLOOR INTERIOR NORTH SECTION SHOWING PULLEY BELT MACHINERY
AND MODINE HEATER

CAMERA FACING EAST



Photograph No 17

INTERNATIONAL SHOE FACTORY BUILDING
160 N. MAIN ST
ST CLAIR MO 63077

Photographer JAMES H EVANS
APRIL 17, 1992

NEGATIVE JOHN O Roberts
2186 FAIROAK
ST CLAIR MO 63077

FIRST FLOOR INTERIOR NORTH SECTION SHOWING EXHIBIT OF
SHOE FACTORY ARTIFACTS by ST CLAIR HISTORICAL MUSEUM

CAMERA FACING EAST



Photograph No 18

INTERNATIONAL SHOE COMPANY FACTORY BUILDING
168 N MAIN
ST CLAIR MO 63077

Photographer Guy Pierce

JAN 3 1922

NEGATIVE ST CLAIR HISTORICAL MUSEUM
BOX 137
ST CLAIR MO 63077

FOUNDATION OF NORTH SECTION IN 1922
CAMERA FACING EAST

CONSTRUCTION WORK OF
INTERNATIONAL SHOT FACTORY
SAINT LOUIS MISSOURI

PHOTO BY PICTE
JAN 3 1922

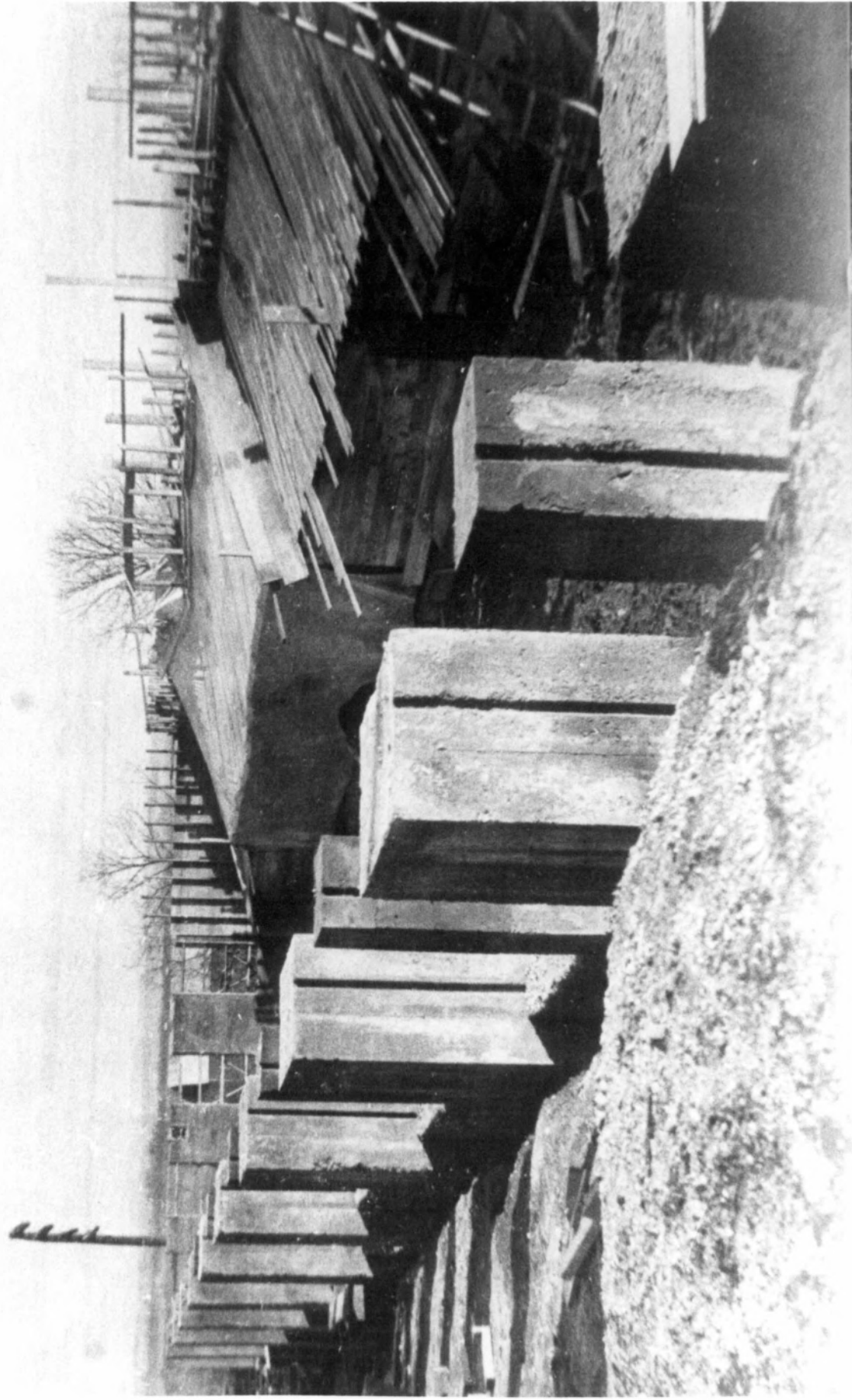


Photo 19

INTERNATIONAL SHOE FACTORY BUILDING
160 N MAIN
ST CLAIR MO 63077

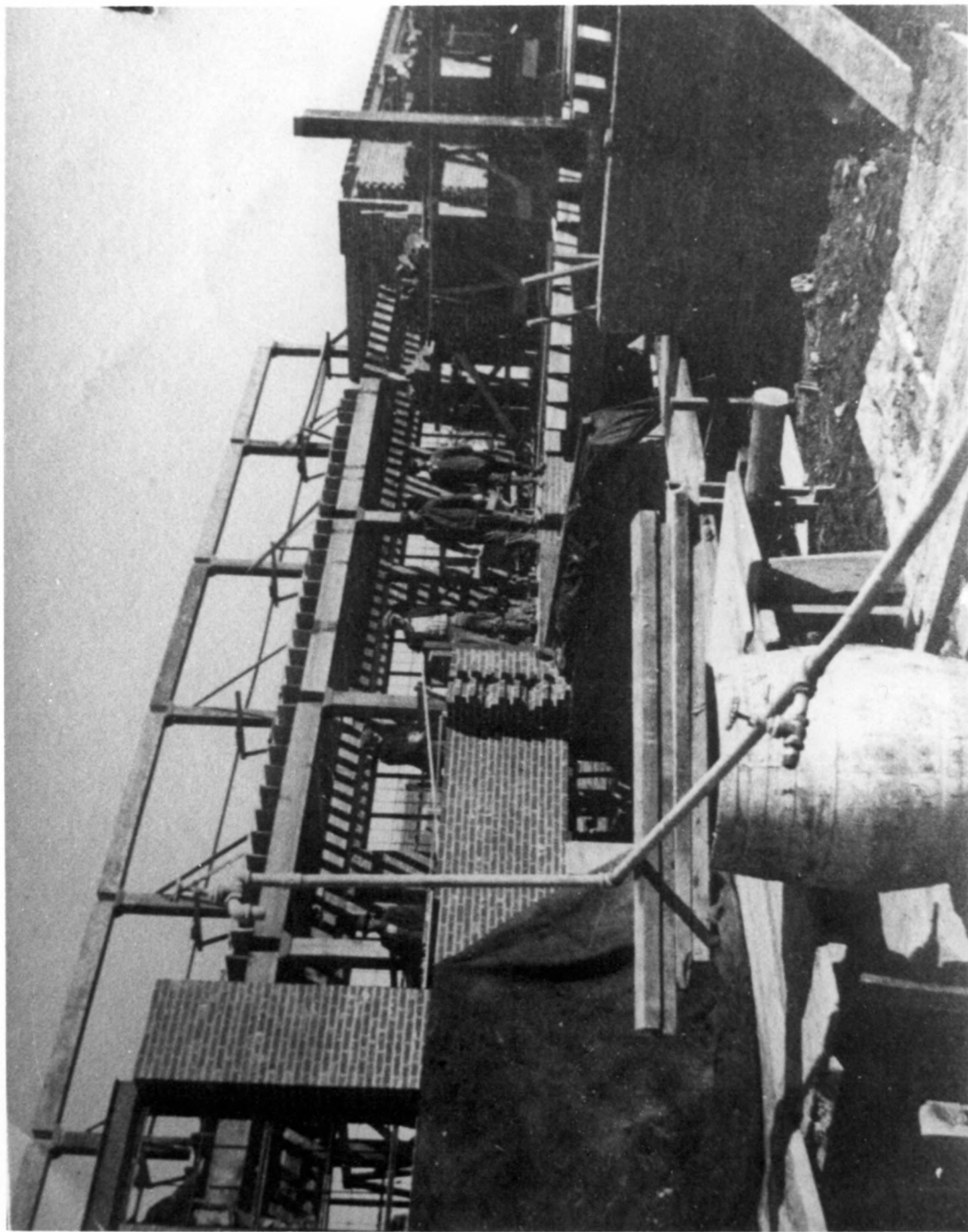
Photograph - UNKNOWN
CA JAN 1922

NEGATIVE - ST CLAIR HISTORICAL MUSEUM
BOX 137
ST CLAIR MO 63077

EXTERIOR VIEW SHOWING 1ST FLOOR CONSTRUCTION ON NORTH SECTION ~~AND~~ FACADE

CAMERA FACING ENE

Photo NO. 19



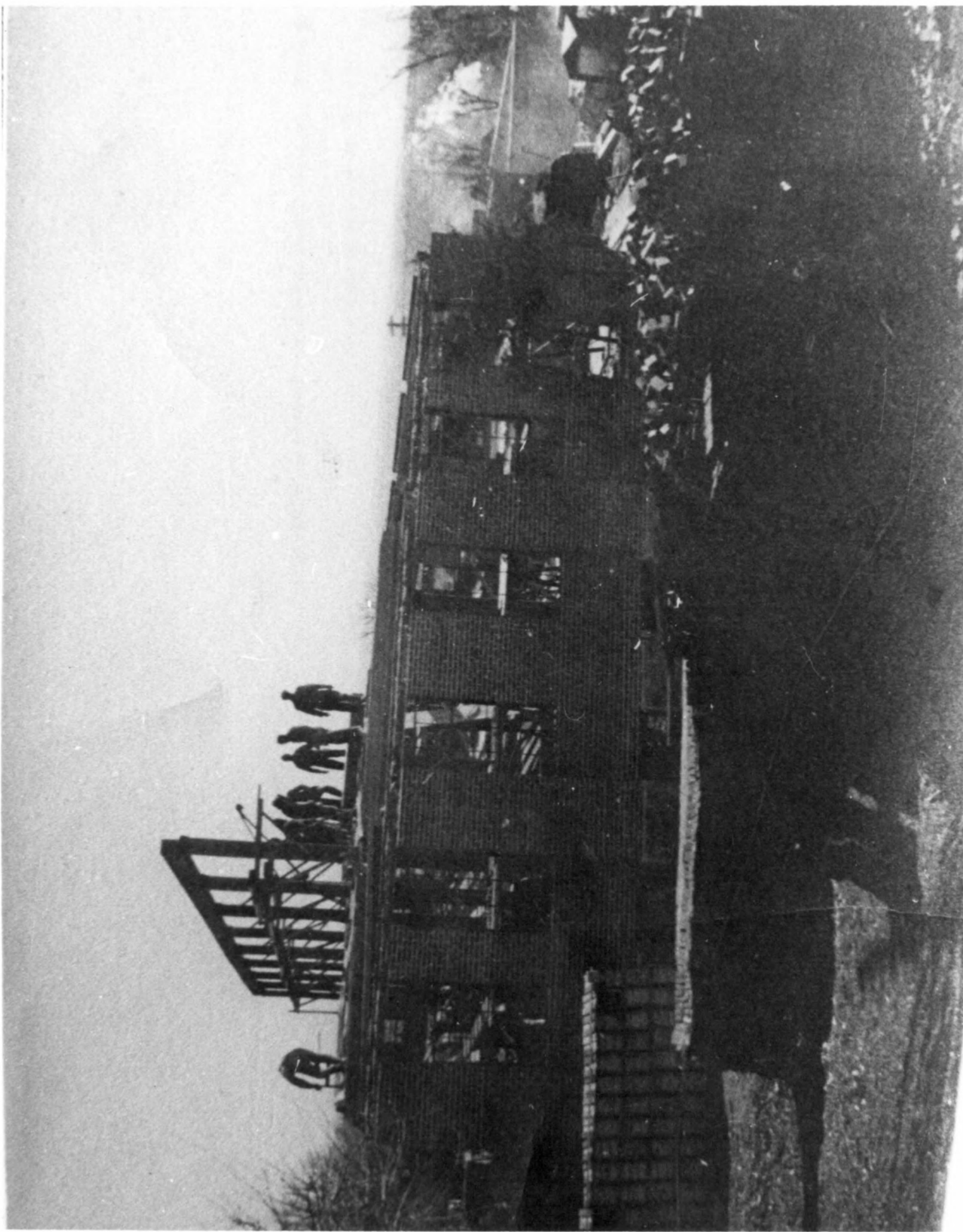
INTERNATIONAL SHOE COMPANY FACTORY BUILDING
160 N. MAIN ST.
ST CLAIR MO 63142

Photograph No. 20

Photographer UNKNOWN
CA FEBRUARY 1922

NEGATIVE ST CLAIR HISTORICAL MUSEUM
BOX 197
ST CLAIR MO 63077

EXTERIOR VIEW NORTH ELEVATION CONSTRUCTION 1922
CAMERA FACING SOUTH



Photograph No. 21

FACTORY BUILDINGS

INTERNATIONAL SHOE COMPANY

160 N MAIN

ST CLAIR MO 63677

Photographer UNKNOWN

CA FEBRUARY 1922

NEGATIVE ST CLAIR HISTORICAL MUSEUM

BOX 137

ST CLAIR MO 63677

INTERIOR VIEW NORTH SECTION UNDER CONSTRUCTION

CAMERA FACING WEST



Photograph No: 22

INTERNATIONAL SHOE FACTORY BUILDING
160 N. MAIN ST.
ST CLAIR MO63077

Photographer UNKNOWN
CA FEB 1922

NEGATIVE ST CLAIR HISTORICAL MUSEUM
BOX 137
ST CLAIR MO63077

EXTERIOR VIEW OF EAST ELEVATION OF NORTH SECTION 1522
CAMERA FACING NNW.



Photograph No 23

International Shoe Company Factory Bldg.
160 N. MAIN ST.
ST CLAIR MO 63077

Photograph UNKNOWN
CA 1923

Negative ST CLAIR HISTORICAL MUSEUM
BOX 137
ST CLAIR MO 63077

EXTERIOR VIEW OF FACADE AND NORTH SECTION AFTER COMPLETION OF BUILDING
CA 1923

CAMERA FACING ENE



EXTRA

PHOTOS

