

# ROARING RIVER STATE PARK BIG SUGAR CREEK STATE PARK

Public Meeting  
June 5th, 2025



# Introductions

## Joining us today

- Community Officials
- MSP Leadership
- RRSP Staff
- Roaring River Adventures
- Missouri Department of Conservation



**MISSOURI**  
STATE PARKS

*Missouri State Parks – a division of the  
Missouri Department of Natural Resources*



# WELCOME!

## Topics of Discussion

- Past Projects
- Upcoming Projects
- Upcoming Park Events
- Recycling Program Update
- Opening Day Recap
- Facebook Page
- Ecological Stewardship
- Natural Resource Interpretation
- Ranger Program Updates
- Concession Updates
- Missouri Dept. of Conservation



# PAST PROJECTS

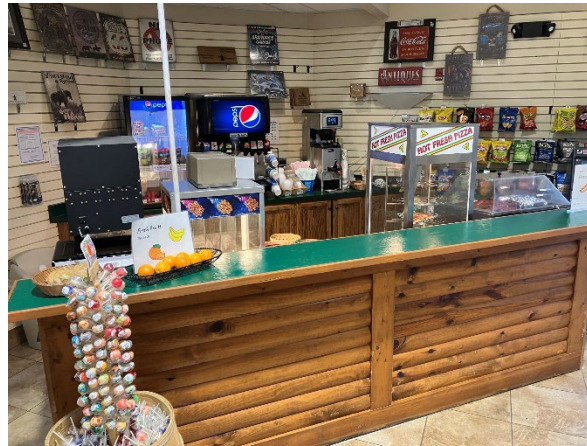
Mike Busekrus  
Superintendent





# PAST PROJECTS OVERVIEW

- Constructed new “Grab & Go” counter for the Park Store
- New swing set in Zone 1
- Refreshed the Amphitheatre
- 4 Electric vehicle chargers installed & functional
- Propane system improvements at the Park Office
- Propane System improvements at Camp Smokey
- R60 insulation installed at CCC Lodge & HVAC system work



# PAST PROJECTS OVERVIEW

- Renovated 4 showers in campground 3
- Installed new metal roof on the Maintenance Shop
- 2 storm sirens were installed in CG1 & CG3
- Little Free Library installed at Nature Center





# PAST PROJECTS OVERVIEW

- Remodel of the Nature Center Exhibit Space





# PAST PROJECTS OVERVIEW

- Began working on school house
- Removal of hazard trees
- Installed new roof Park Office

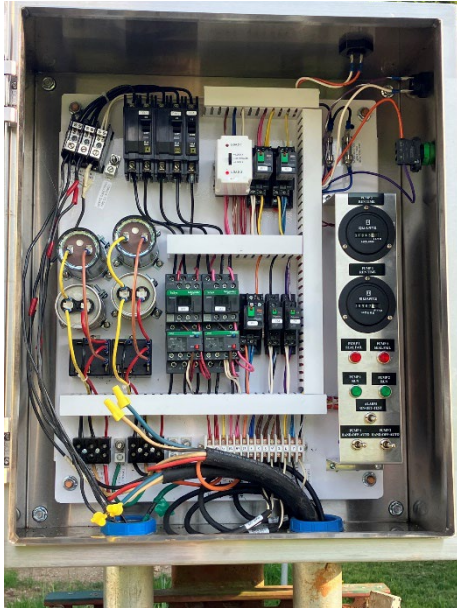




# PAST PROJECTS OVERVIEW

## ARPA Wastewater system improvement project

- Rebuilt all lift stations in the park, pumps, electronics, etc.
- New wastewater line bored below the stream near fish cleaning station
- Upcoming waterline work near CCC Lodge



# PAST PROJECTS OVERVIEW

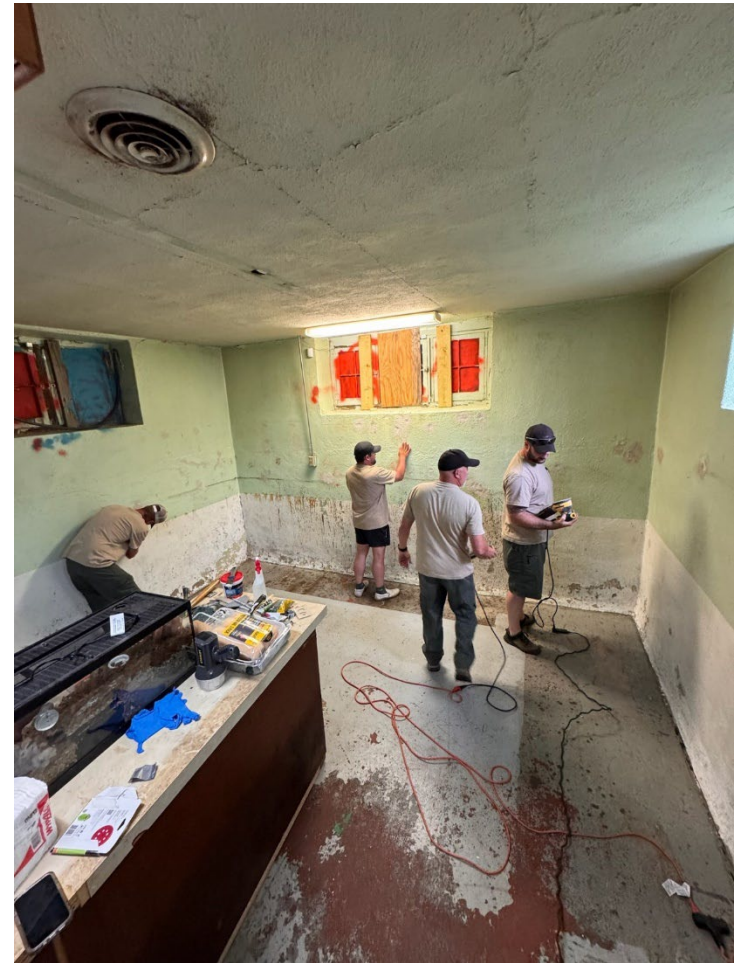
- Campground 2 improvements
  - 4 sites removed, 3 new constructed in place
  - Sites have been raised and no longer hold water
  - Amenities remain the same





# PAST PROJECTS OVERVIEW

- Working on creating a classroom space at the Nature Center



# PAST PROJECTS OVERVIEW

- Broke ground for new trailhead for Fire Tower Trail re-route
- Highway crossings will be eliminated
- Old parking lot will be removed.





# PAST PROJECTS OVERVIEW

Facility improvements in partnership with Roaring River Adventures

- Refrigerators & ranges at the duplex cabins
- HVAC upgrades at the Emory Melton Inn
- HVAC upgrades in several cabins
- Propane improvements at the Emory Melton Inn
- HVAC upgrades at the Park Store
- New range hood vent at the Emory Melton Inn
- New furnishings for the Honeymoon Cabin
- PTAC units at the Emory Melton Inn
- Made improvements in the restaurant kitchen
- Fire system improvements at the Emory Melton Inn

These investments total more than \$150,000!



# PAST PROJECTS OVERVIEW

Spruced up the lower level of the CCC Lodge

- Fly Tying, Coffee w/ Superintendent, Learn 2 Trout Fish, Christmas Open House, Eagle Days, Coffee w/ Birds, CCC Exhibit





# PAST PROJECTS OVERVIEW

- Campground 3 Ribbon Cutting, March 1



# PAST PROJECTS OVERVIEW

- All these projects in addition to daily routine maintenance items, cleaning, and mowing!

***Next time you see our team out and about give them a thanks!***

# UPCOMING PROJECTS

**Mike Busekrus**  
Interim Superintendent



# UPCOMING PROJECTS OVERVIEW

## Roaring River

- Campground 2, Phase 2 improvements, sites 109-118
- CCC Shelter restoration
- Completing water & wastewater system improvements
- Complete Fire Tower Trailhead / working with MODOT to remove highway crosswalks / new section of trail
- Completing shower renovation in Campground 3
- Schoolhouse work will continue
- Nature Center Classroom Space work will continue
- Remodel of cabins 4-9 in partnership with Roaring River Adventures

## Big Sugar Creek

- Renovate vault toilet
- Rock building roof replacement

# Official Facebook Page

**Mike Busekrus**  
Superintendent



# Official Facebook Page

- Official Facebook Page
  - Look for the red circle / blue verified checkmark
  - Nearly doubled our following since last year!
  - Quickest way to get info out to visitors



Lots of fish being caught today, post up those Opening Day photos in the comments!  
Sat, Mar 1



Views	Reach	Interactions
481,416	387,655	4,853

UPCOMING PROJECTS

MISSOURI STATE PARKS





# Official Facebook Page

- Best source for up-to-date information
- Weekly MEGA post
- Historical photos
- Events
- Weather / Stream Conditions



Sat, May 31 at 10 AM and 5 more

**Pollinator Garden Workdays**

12716 Farm Road 2239, Cassville, MO, United States,  
Missouri 65625 · Cassville...



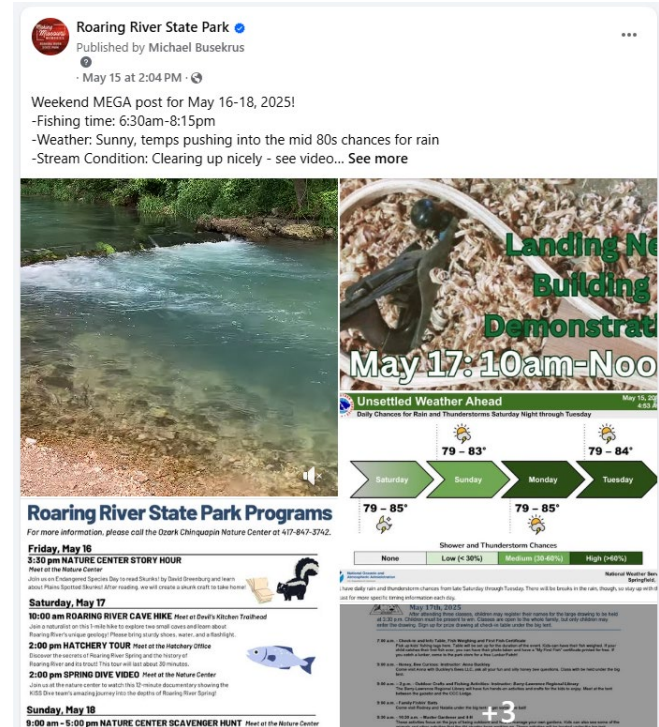
Thu, Jun 5 at 6PM  
**Public Meeting - Roaring River and Big Sugar  
Creek state parks**  
12716 Farm Road 2239, Cassville, MO, United States,  
Missouri 65625 · Cassville...



Sun, Jun 8 at 6:30 AM  
**Free Fishing Weekend**  
12716 Farm Road 2239, Cassville, MO, United States,  
Missouri 65625 · Cassville...



Sat, Jun 21 at 10AM  
**Fly Tying & Coffee**  
12716 Farm Road 2239, Cassville, MO, United States,  
Missouri 65625 · Cassville...



**Roaring River State Park is under a FLASH FLOOD WATCH until Monday, May 26 @ 7pm.**

## UPCOMING PROJECTS

MISSOURI STATE PARKS



# Recycling Program & Opening Day 2025

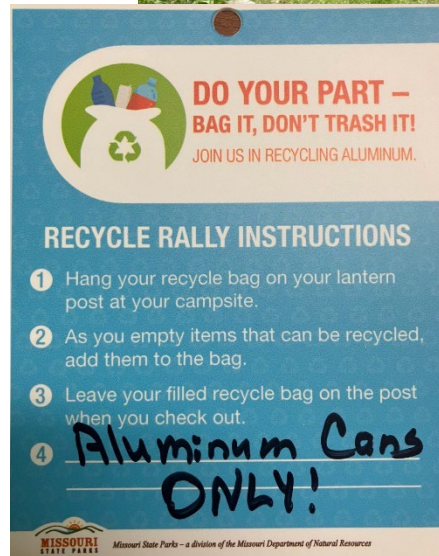
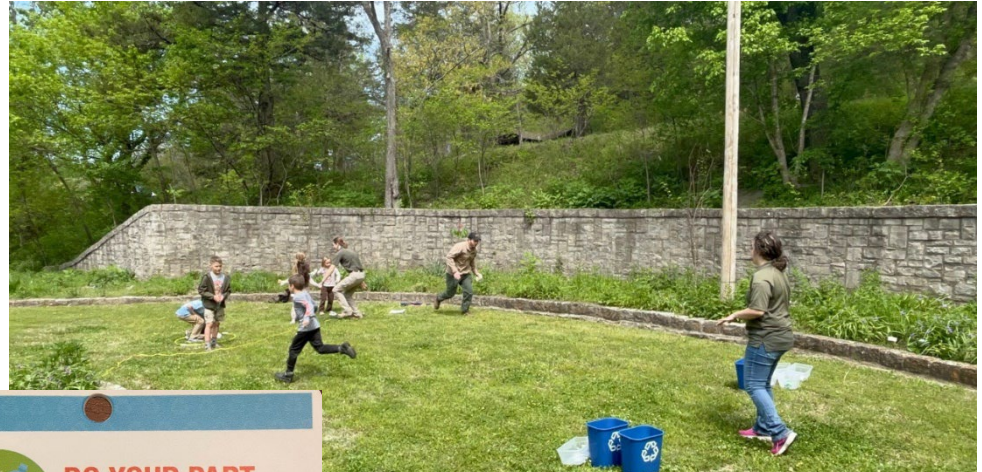
Forrest Brumm

Assistant Superintendent



# Recycling Program Update

- Piloted the program in CG 1 and have now launched it through all 3 campgrounds.
- Average 320lbs aluminum recycled per month.
- Currently only accepting aluminum cans.
- Working with local recyclers





# Opening Day Recap

- Roaring River continues to be the premier trout fishing destination for the Ozarks.
- More tags sold than all other trout parks.
- Governor Mike Kehoe shot the gun to start the 2025 season.



# NATURAL RESOURCE INTERPRETATION

Anna Skalicky

Park Naturalist





# WHAT IS INTERPRETATION?





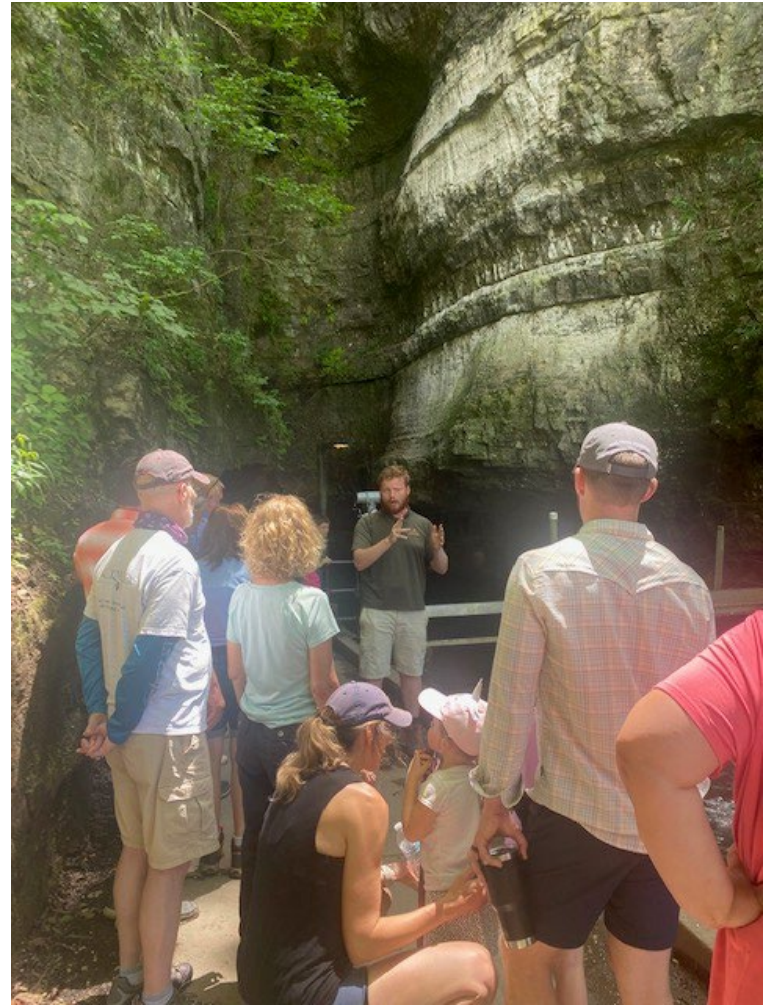
# OZARK CHINQUAPIN NATURE CENTER

- The nature center is open Friday through Monday from 9am-5pm.
- Interior renovations
- Little Free Library
- Since last June, we've had about 5,000 people tour the nature center.



# INTERPRETIVE PROGRAMMING

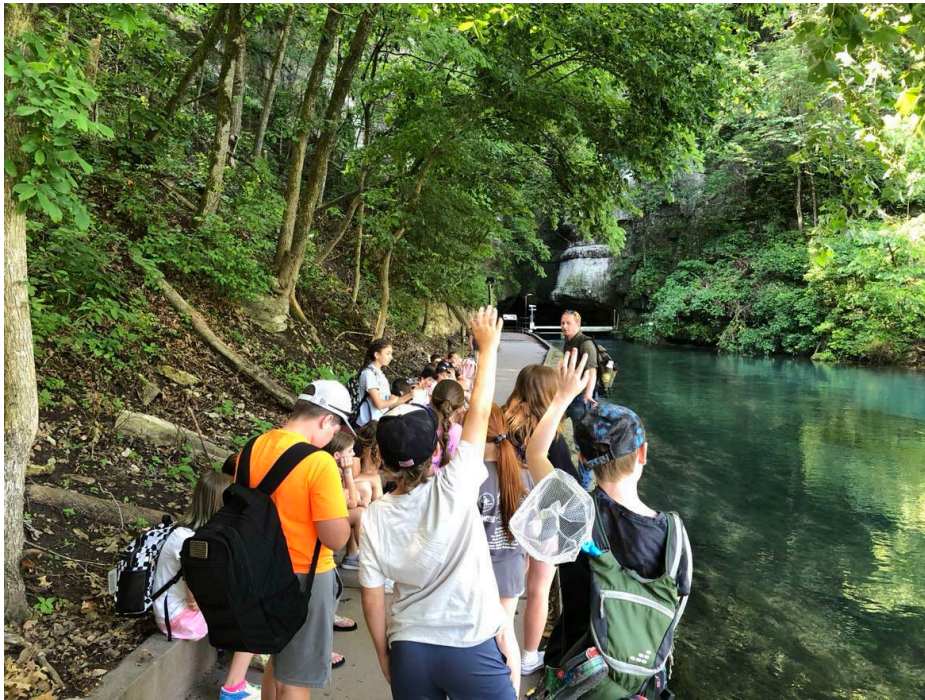
- Variety of programs including classics like cave hikes, river walks, hatchery tours, and snake programs.
- New program offerings regularly like story hours and crafts
- Weekly program schedule available on the park Facebook page, park bulletin boards, or by calling the park office or nature center
- Since last June, a little over 2,000 people have attended an interpretive program (not field trip or special event) in the park.





# GROUP PROGRAMMING

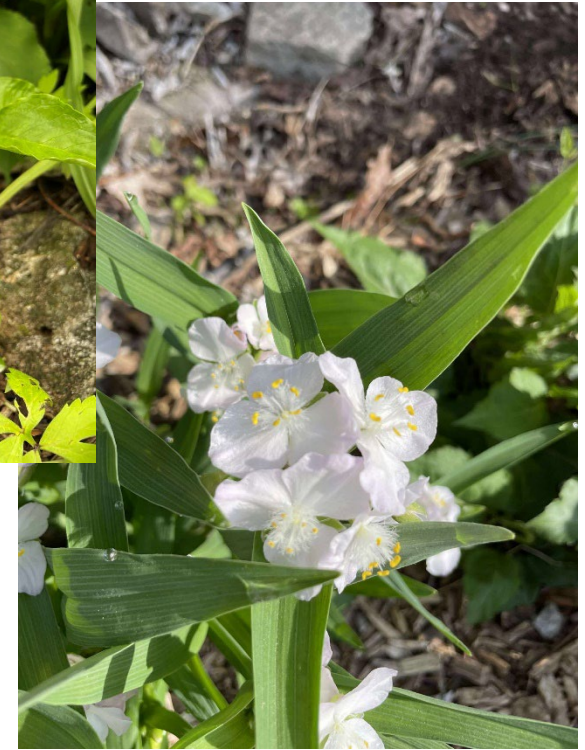
Since last June, we've had ***26 school groups*** take field trips to the park with nearly ***900 students***.





# POLLINATOR GARDEN

- Over 70 native plants
- Volunteer-led effort
- Identification signage
- Garden workdays





# PARK EVENTS

CCC Pop-Up Exhibit, Geminid Meteor Shower Viewing, First Day Hikes, Bald Eagle Days





# PARK EVENTS

## Coffee for the Birds and Earth Day





# PARK EVENTS

## Kids Free Fishing Day





# WOMEN IN NATURE



Big Sugar Creek



Roaring River



# UPCOMING EVENTS

Kid's €G 1 OE: Sat, July 12

v Á†-CE« v OEπ- i Á† π· OE ` †ŠD π: Sat, September 13

(registration opens July 31)

i f i z AEÁÁ€ Fri, October 10-Sun, October 12

(registration opens August 12)



# ECOLOGICAL STEWARDSHIP

Murphy Kindoll  
Natural Resource Ecologist





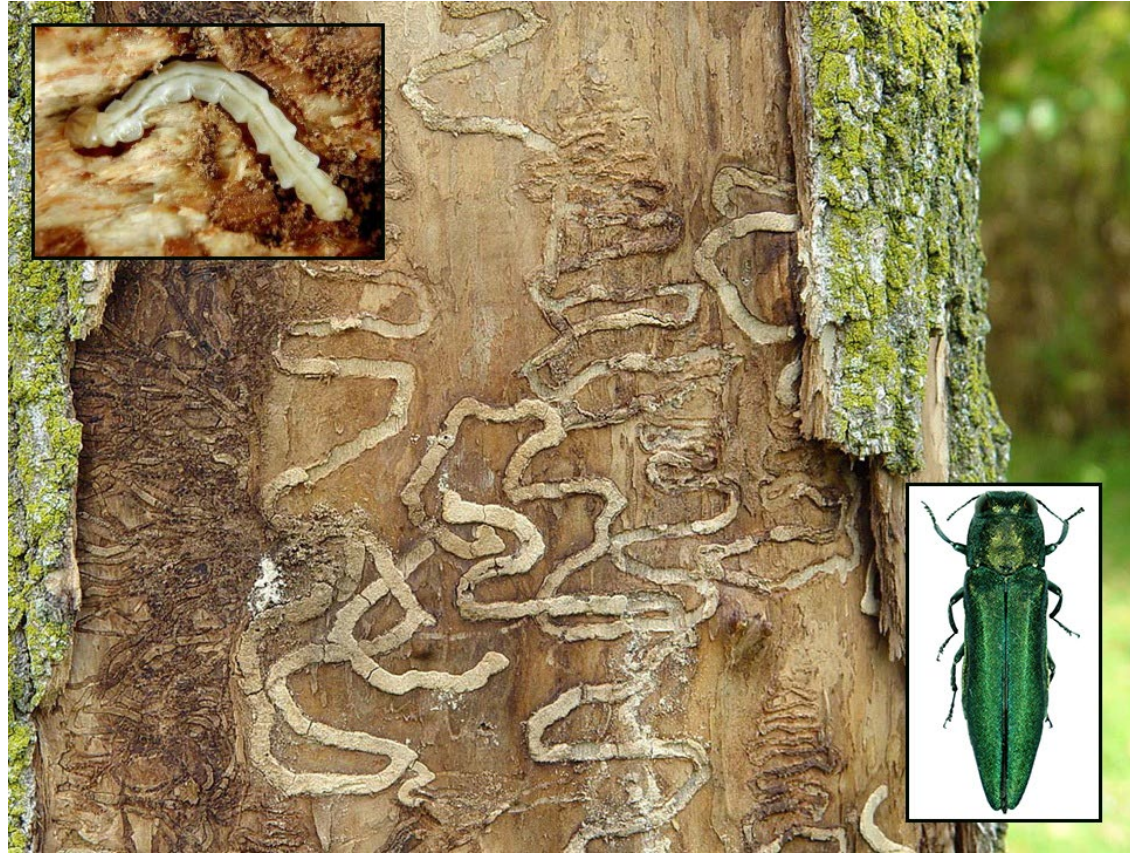
# Tree Removal

- Significant storms and EAB resulted in lots of tree damage
- Tree survey conducted every fall, this year's survey resulted in removal of 46 trees



# Emerald Ash Borer

- Has been very detrimental to our Ash populations across the US
- One of main reasons for significant tree mortality in the campgrounds
- Usually spreads by transport of infested wood



<https://naturallycuriouswithmaryholland.wordpress.com/2018/03/05/first-emerald-ash-borer-evidence-found-in-vermont/>



# Tree Replacement Plan

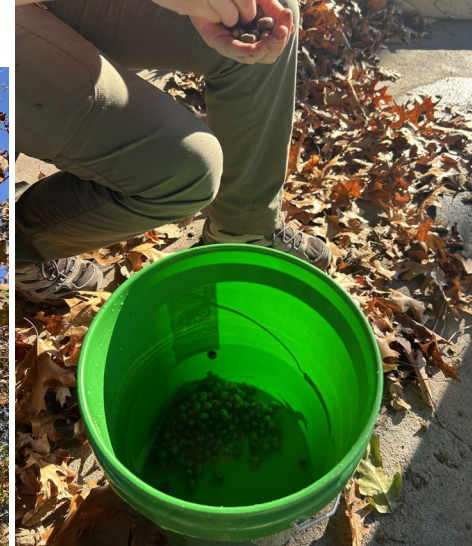
- First round of transplant saplings were planted in the new section of campground 3
- Future plans to fill that area in and provide more shade





# Tree Landscaping Plan

- MSP has partnered with Forrest-Keeling tree nursery
- We collect seeds, they grow saplings at their facility and we plant them at our sites
- Keeps plant genetics true to each park
- Currently working on yearly collection and replanting/improvement program





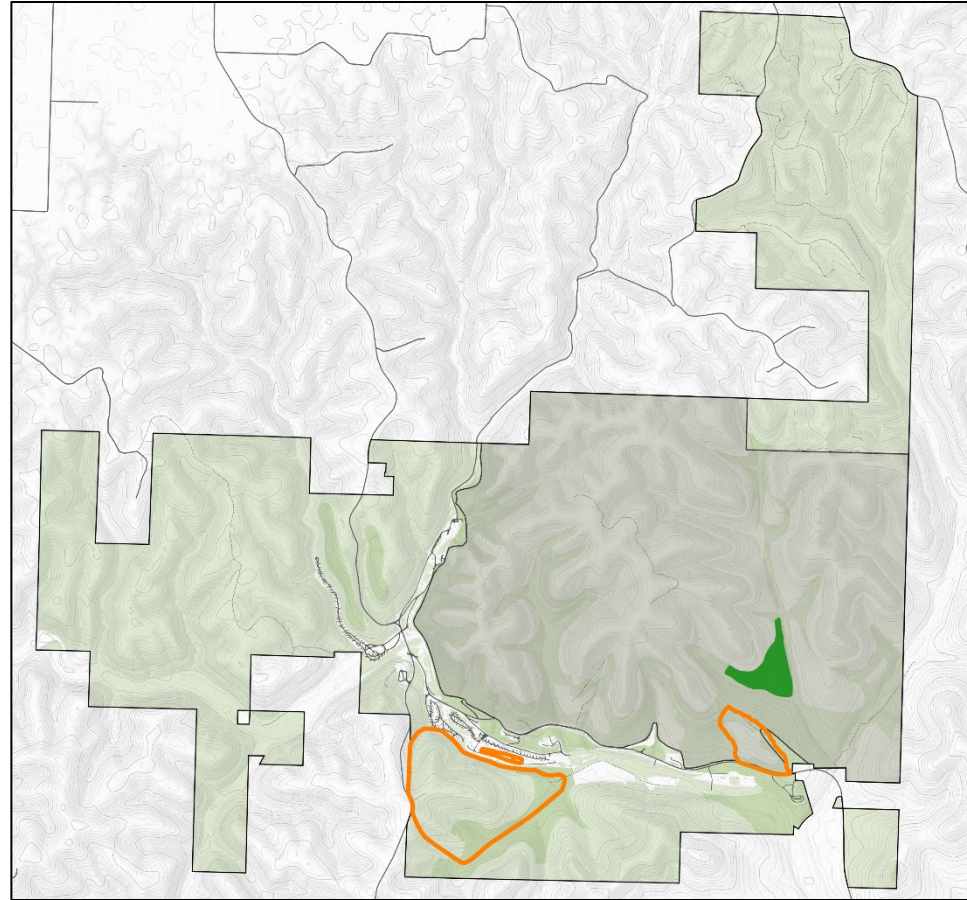
# Natural Resource Management (RRSP)

- Firelines
  - Pollinator Area (0.5 miles)
  - Unit 7 (1 mile)
  - Pine Hollow (1.5 miles)



# Natural Resource Management (RRSP)

- Firelines
  - Pollinator Area (0.5 miles)
  - Unit 7 (1 mile)
  - Pine Hollow (1.5 miles)





# Natural Resource Management (RRSP)

- Rx burning
  - Pollinator Area (2.5 acres)
- Glade Restoration
  - Continued work on glade 3
- Continued flora/fauna studies are being conducted
  - Ozark Chinquapin
  - Spring recharge study



# Natural Resource Management (RRSP)



## **Ecological Factors Influencing Chestnut Blight Infection and Reproductive Success in Ozark Chinquapins (*Castanea ozarkensis*)**

Authors: Evilsizor, Danielle F., and George, Andrew D.

Source: Natural Areas Journal, 45(2) : 66-75

Published By: Natural Areas Association

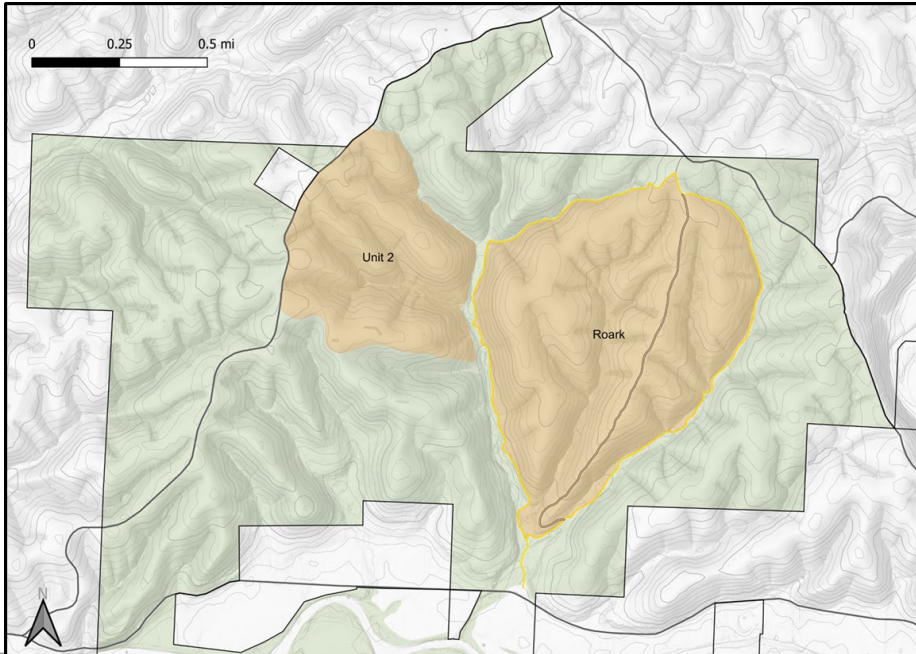
URL: <https://doi.org/10.3375/2162-4399-45.2.2>





# Natural Resource Management (BSCSP)

- Firelines
  - Roark unit (4 miles)
  - Unit 2 (2.5 miles)
    - AmeriCorps St. Louis



# Wild Area Update (RRSP)

- 1 mile of fireline built
- Continued glade restoration and invasive species control occurring
- Firetower trail reroute project is underway and will better showcase the natural features of the area
- Main threats include invasive species and cedar encroachment on glades





# Wild Area Update (BSCSP)

- 6.5 miles of fireline built
- Moderate storm damage to trees (has all been cleared from public use areas)
- Continued invasive species control occurring
- Main threats include invasive species, cedar encroachment on glades and unauthorized use.



# Park Events

**Amanda Cope**  
Assistant Superintendent





# PAST EVENTS OVERVIEW

- Holiday Kick Off In The Park
  - Christmas Door Swag
  - Ornaments
  - Kids DIY Lantern Tutorial Video





# PAST EVENTS OVERVIEW

- 1<sup>st</sup> Annual Christmas Candlelight and Cookie Stroll
  - Santa Meet and Greet
  - Traditional Christmas Stories
  - T'was The Night before Christmas Reading
  - Cookies and hot cocoa
  - 500 luminaires





# Upcoming Events

- 1<sup>st</sup> Annual Trout-O-Lantern Festival
  - October 25<sup>th</sup> 2025
    - Campsite decorating contest
    - Story Teller
    - More to Come



# Upcoming Events

- **Christmas Open House and Holiday Season Kick Off**
  - Christmas Door Swag and Ornaments
    - Nov. 8<sup>th</sup>, 2025, 9am-12pm  
CCC Lodge
  - Catch the Spirit of Christmas with Roaring River Adventures- Christmas Retail and Fantastic Deals!
- **2<sup>nd</sup> Annual Candlelight and Cookie Stroll**
  - Meet and Greet with Santa at the CCC Lodge
  - Cookies and Hot Cocoa
  - T'was The Night Before Christmas Reading
  - 1000 luminaires
  - 1 Ornament Per Family
    - Dec. 20<sup>th</sup> 2025, 5:30pm to 8:30pm





# CONCESSION

Jotham Brown

General Manager



# MISSOURI STATE PARKS RANGER PROGRAM

Carrie Byron  
Park Ranger





# MISSOURI DEPARTMENT OF CONSERVATION

**Terry Gerke**

Assistant Hatchery Manager, Roaring River Hatchery



# **mostateparks.com**

## Questions?

