

We hope you enjoyed making memories
this year with the Cuivre River State Park
Passport to Adventure!

If you have questions, please call the park office at
636-528-7247. Park maps are located at the office and the
campground check station.

When you have finished, show your completed passport
to park staff at the visitor center to be entered into the
grand prize drawing.



PASSPORT TO ADVENTURE



CUIVRE RIVER STATE PARK

75 Years of Making Memories



Instructions

This is your passport to discover all that Cuivre River State Park has to offer: adventure, education, and memories. Each activity can be completed at your own pace. Some activities require you to take a photo or get a stamp from park staff, while others may ask you to reflect on your experience or answer a challenge question. If you complete all challenges, show your completed passport to park staff to be entered into a drawing for a \$50 Missouri State Park gift card. The passport challenge ends on Oct. 31, 2021. If you have questions or need help with the locations of any of the challenges, stop by or call the park office at 636-528-7247.



Bulletin Board Scavenger Hunt

Within the park, there are 12 bulletin boards/kiosks. On each board, you will find a Cuivre River Fun Fact. Read the fun fact and look for the highlighted word. Record the highlighted words below to form a memorable quote. Each Cuivre River Fun Fact will have a number, which will tell you where to place that word in the quote. Bulletin boards in the campground are not included in the hunt.

“ _____ ”
1 2 3

_____ , _____
4 5 6

_____ _____ _____
7 8 9

_____ _____ _____ ” -John Muir
10 11 12



Volunteer Your Time

By now, you have discovered the many special places in Cuivre River State Park, and made precious family memories along the way. Park staff are proud to take care of the park and provide a place for you to come and play, but we need your help. If you love Cuivre as much as we do, volunteer an hour of your time to help park staff with a special project. Call the park office to inquire about special volunteer days or what current volunteer opportunities exist.

Schedule your hour of volunteer time and get a signature from park staff after it is completed.

Date _____

Staff Signature _____



Visit Frenchman's Bluff

Visit Cuivre River State Park's most scenic overlook. Frenchman's Bluff is located in the southwest corner of the park, along Cheatham Road. This spot overlooks the Cuivre River valley and is known for spectacular sunsets. People have lived in this river valley for thousands of years, drawn here by the abundance of resources. You can also access the overlook by hiking Frenchman's Bluff trail.

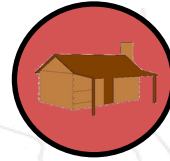
Sit on the rocks and reflect on this area. Use the space below to record your observations or thoughts. Examples: What do you see or hear? Why do you think early settlers were drawn to this area? How do you think the land has changed in the 200 years that Missouri has been a state?



CCC Legacy

In 1934, the federal government began buying land from farmers that was identified as “sub-marginal” farmland. The purchased land would then be part of a new Recreational Demonstration Area, a place for recreation and a chance for farmers suffering during the Great Depression to start over on better land. The young men planted thousands of trees and learned valuable trades like masonry, construction, plumbing, and carpentry while building many of the park structures, roads, and trails. Still standing today are camps Sherwood and Derricotte, the Stone Shelter, the one lane bridge, the old park office, and numerous small stone culverts.

Visit one of our two most notable CCC structures in the park- the one-lane bridge or the Stone Shelter- and use the space below to reflect on the impact this program had on this area, or draw what you see.



Paw Paw House

Charles Linahan, affectionately known by his grandchildren as “Paw Paw,” lived in a house near the Cuivre River in the southwest corner of the park. His unique log home was known by many campers who attended camp in camps Sherwood, Derricotte, and Frenchman’s Bluff. Mr. Linahan worked in Camp Sherwood for many years, and often children would hike to his house to view his Native American artifact collection or hear him tell stories. Sadly, shortly after Linahan’s death in 1964, the log home was struck by lightning and burned down, leaving only the chimney.

Visit the site of the Paw Paw House chimney and read the interpretive panel located there to answer the following challenge question:

Where did the stones for the Paw Paw House chimney come from?



Visit the Prairie

At one time, Lincoln County was dotted with pockets of rolling prairie, but almost all of those prairies were converted to farmland after European settlement. Several remnant prairies have been restored here at Cuivre River State Park. Within the prairie you can find many unique species that are found only in that natural community. Today, less than 2% of the world's prairie communities remain, making it the most endangered habitat on the planet.

Be a Citizen Scientist! We recommend downloading the iNaturalist app to your phone before your hike. You can take photos of the plants and insects you see, and the app has a feature that will help you identify and record your observations. Scientists and park staff use these observations to track species data, allowing us to better manage the park's special natural communities like prairies.

Take a walk through Sac Prairie along the Prairie trail, or the larger Sherwood Prairie along the Blazing Star trail. Take a photo of your favorite prairie flower or insect. Show it to a park staff member or campground host to receive your stamp.



Visit a Spring

Cuivre River State Park is unique in northeast Missouri for having geologic features that are characteristic of the Ozarks: springs, sinkholes, and caves. These features have made Cuivre River State Park the northernmost location for several plant and animal species in the state. Two of the largest springs in the park are Lone Spring, located in the Northwoods Wild Area along the Lone Spring Trail, and Duey Spring, located on the north loop of the Cuivre River Trail. Duey Spring is named for David Duey, who owned a farm there in the mid-1800s. The flow from each spring can be intermittent during dry periods, but during spring and times of plentiful rainfall, flow is steady and can reach rates of over 3 million gallons a day.

Hike the Lone Spring Trail or Cuivre River Trail North Loop. Take a selfie by the spring and show park staff for a stamp. Hint: If you don't want to hike the entire trail, call or come by the visitor center. Park staff can provide directions for the quickest route to the springs; each located about a 1-mile walk from the parking lot.



Go Camping

No adventure at Cuivre River State Park is complete without a camping trip. We offer basic, electric, and full hookup campsites in the main campground; camping for equestrians in our equestrian campground; and backpack camping at our four backpack camps. Cuivre River State Park also offers three platform tent sites that overlook Lake Lincoln. Choose your favorite camping adventure and spend at least one night under the stars.

Speak with a campground host or park staff member to receive your stamp. In the space below, tell us your favorite memory from your camping adventure! If you camp in a backpack campsite, take a photo of your campsite.

My favorite memory was



Paddle Your Park

Cuivre River State Park offers watercraft rentals on 55-acre Lake Lincoln. Rent a canoe or kayak, or bring your own watercraft to complete this challenge. Watercraft reservations can be made online. Be sure to paddle safely-wear your life vest and don't forget the sunscreen!

Get your stamp from the campground host when you check in for your watercraft rental. If you bring your own watercraft, take a photo of your paddling adventure and present it to the campground hosts or park staff at the visitor center to receive your stamp.

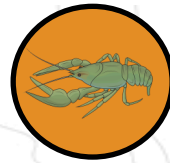


Go Fishing

Lake Lincoln offers opportunities for fishing at the fishing dock (located at the boat ramp) and along the Lakeside Trail. The 55-acre lake has bass, bluegill, sunfish, crappie, and catfish. Boats are allowed in Lake Lincoln with electric motors only, and fishing regulations are posted at the boat ramp. Pro tip: The lake is stocked with over 800 catfish every fall, so bring your catfish bait! Our fishing dock is ADA accessible.

For an extra adventure, take your fishing pole and walk about 0.75 miles north on the Lone Spring Trail to the Shady 80 Lake. This 12-acre lake is a hidden gem, and everyone's favorite secret fishing spot. The gazebo located at the lake is a great place for a picnic.

Take a photo of your family enjoying your fishing trip, and present it to park staff or the campground hosts to receive your stamp.



Take a Peek in the Creek

Big Sugar Creek is a crystal-clear stream that spans the entire length of the park from north to south. As you walk along, look for crayfish, minnows, tadpoles, and frogs. You can access the creek from the Big Sugar Creek Day Use Area. Don't forget your picnic basket- there are picnic tables and barbeque grills located here too. During prolonged periods of dry weather, the water level in Big Sugar Creek can get quite low or even dry up. Make plans to splash in the creek before August if you can.

Plan a day to play in the creek! Take a photo of your family enjoying the creek and use the space below to tell us your favorite creek memory.

My favorite creek memory was



Interpretive Programs

Attend at least three interpretive programs or events. Tell us one thing you learned during the program, and have the park interpreter sign your passport.

Program 1: Title: _____

Date: _____ Interpreter initials _____

One thing I learned was:

Program 2: Title: _____

Date: _____ Interpreter initials _____

One thing I learned was:

Program 3: Title: _____

Date: _____ Interpreter initials _____

One thing I learned was:



Take a Hike

Hike at least five trails this year.

Hamilton Hollow (0.8 mile) Date _____

Frenchman's Bluff (1.5 mile): Date _____

Old Schoolhouse (3.85 mile): Date _____

Lakeside Trail (3.5 mile): Date _____

Cuivre River North Loop (4 mile): Date _____

Cuivre River South Loop (7.25 mile): Date _____

Big Sugar Creek (3.75 mile): Date _____

Turkey Hollow (0.8 mile) Date _____

Blackhawk Point (5.75 mile): Date _____

Blazing Star (2 mile): Date _____

Lone Spring (4.75 mile): Date _____

Prairie (0.3 mile): Date _____