

We hope you enjoyed making memories
this year with the Cuivre River State Park
Passport to Adventure!

If you have questions, please call the park office at
636-528-7247. Park maps are located at the office and the
campground check station.

When you have finished, show your completed passport
to park staff at the visitor center to be entered into the
grand prize drawing.



PASSPORT TO ADVENTURE



CUIVRE RIVER STATE PARK

75 Years of Making Memories





Volunteer Your Time

By now, you have discovered the many special places in Cuivre River State Park, and made precious family memories along the way. Park staff are proud to take care of the park and provide a place for you to come and play, but we need your help. If you love Cuivre as much as we do, volunteer an hour of your time to help park staff with a special project. Call the park office to inquire about special volunteer days or what current volunteer opportunities exist.

Schedule your hour of volunteer time and get a signature from park staff after it is completed.

Date _____

Staff Signature _____



Visit Frenchman's Bluff

Visit Cuivre River State Park's most scenic overlook. Frenchman's Bluff is located in the southwest corner of the park, along Cheatham Road. This spot overlooks the Cuivre River valley and is known for spectacular sunsets. People have lived in this river valley for thousands of years, drawn here by the abundance of resources. When you look out across the valley, you will see where the meandering river is cutting a new channel across the farm field.

The bluff parking area is gravel, but level and mostly smooth.

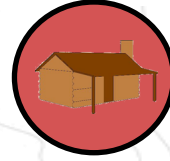
Sit on or near the rocks and reflect on this area. Use the space below to record your observations or thoughts. Examples: What do you see or hear? Why do you think early settlers were drawn to this area? How do you think the land has changed in the 200 years that Missouri has been a state?



CCC Legacy

In 1934, the federal government began buying land from farmers that was identified as “sub-marginal” farmland. The purchased land would then be part of a new Recreational Demonstration Area, a place for recreation and a chance for farmers suffering during the Great Depression to start over on better land. The young men planted thousands of trees and learned valuable trades like masonry, construction, plumbing, and carpentry while building many of the park structures, roads, and trails. Still standing today are camps Sherwood and Derricotte, the Stone Shelter, the one lane bridge, the old park office, and numerous small stone culverts.

Visit one of our most notable CCC structures in the park-the Stone Shelter-and use the space below to reflect on the impact this program had on this area, or draw what you see. The shelter and restrooms are accessible.



Paw Paw House

Charles Linahan, affectionately known by his grandchildren as “Paw Paw,” lived in a house near the Cuivre River on the southwest corner of the park. His unique log home was known by many campers who attended camp in camps Sherwood, Derricotte, and Frenchman’s Bluff. Mr. Linahan worked in Camp Sherwood for many years, and often children would hike to his house to view his Native American artifact collection or hear him tell stories. Sadly, shortly after Linahan’s death in 1964, the log home was struck by lightning and burned down, leaving only the chimney.

Visit the site of the Paw Paw House chimney and read the interpretive panel located there to answer the following challenge question. If you are unable to get close enough to the sign to read it, please call the park office and a copy of the panel will be emailed or printed for you.

Where did the stones for the Paw Paw House chimney come from?



Visit the Prairie

At one time, Lincoln County was dotted with pockets of rolling prairie, but almost all of those prairies were converted to farmland or pasture after European settlement. Several remnant prairies have been restored here at Cuivre River State Park. Within the prairie you can find many unique species of plants and insects that are found only in that natural community. Today, less than 2% of the world's prairie communities remain, making it the most endangered habitat on the planet.

Be a Citizen Scientist! We recommend downloading the iNaturalist app to your phone before your visit. You can take photos of the plants and insects you see, and the app has a feature that will help you identify and record your observations.

Visit Sac Prairie, located at the Blazing Star and Prairie trails parking lot. If you can, stroll along the mowed and mostly level 0.3-mile Prairie Trail. Or use binoculars to experience the edge of the prairie from the parking lot. Look for birds, butterflies, and bees. Listen for the wind swaying through the tall grass. Take a photo of your favorite prairie flower or insect. Show it to a park staff member or campground host to receive your stamp.



Plan a Family Picnic

Cuivre River State Park is the perfect place to enjoy family time outdoors. The park offers numerous accessible picnic areas throughout the park. The Lake Shelter and Stone Shelter are available to rent and have accessible restrooms. The Hilltop Shelter is accessible, but the vault toilet is not. The shelters have grills and can accommodate a large group.

The picnic area outside of the Stone Shelter is free to use on a first-come, first-served basis, and has numerous accessible picnic pads with grills. All shelters that are not reserved become available to use for free on a first-come, first-served basis.

Plan a family picnic at the park. Make a day of it and work on your passport or bring fun games to play while you are here. To earn your stamp, show park staff your picnic menu and a photo of you and your family enjoying your picnic at the park.



Go Camping

No adventure at Cuivre River State Park is complete without a camping trip. We offer basic, electric, and full hookup campsites in the main campground; camping for equestrians in our equestrian campground; and three platform tent sites that overlook Lake Lincoln. Accessible campsites are available in each location. Choose your favorite camping adventure and spend at least one night under the stars.

Speak with a campground host or park staff member to receive your stamp. In the space below, tell us your favorite memory from your camping adventure!

My favorite memory was



Paddle Your Park

Cuivre River State Park offers watercraft rentals on 55-acre Lake Lincoln. Rent a canoe or kayak, or bring your own watercraft to complete this challenge. Watercraft reservations can be made online. Be sure to paddle safely- wear your life vest and don't forget the sunscreen! The rental watercraft launching area is not accessible to a wheelchair. For those that have their own watercraft, the boat launch area is accessible. An alternative activity will be available to visitors who are unable to complete the paddling activity. A photo scavenger hunt is available upon request.

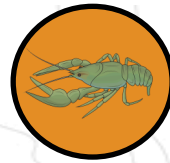
Get your stamp from the campground host when you check in for your watercraft rental. If you bring your own watercraft, take a photo of your paddling adventure and present it to the campground hosts or park staff at the visitor center to receive your stamp. If you complete the photo scavenger hunt alternate activity, show your photos to park staff to receive your stamp.



Go Fishing

Lake Lincoln offers opportunities for fishing at the fishing dock (located at the boat ramp) and along the Lakeside Trail. The 55-acre lake has bass, bluegill, sunfish, crappie, and catfish. Boats are allowed in Lake Lincoln with electric motors only, and fishing regulations are posted at the boat ramp. Pro tip: The lake is stocked with over 800 catfish every fall, so bring your catfish bait! An accessible fishing dock is located at the boat ramp.

Take a photo of your family enjoying your fishing trip, and present it to park staff or the campground hosts to receive your stamp.



Take a Peek in the Creek

Big Sugar Creek is a crystal-clear stream that spans the entire length of the park from north to south. The creek can be accessed from the Big Sugar Creek Day Use Area, but this area is not wheelchair accessible. If you need an alternative activity, ask park staff about a virtual creek program or make a reservation for a mini program where we will bring the creek life to the visitor center. During prolonged periods of dry weather, the water level in Big Sugar Creek can get quite low or even dry up. Make plans to splash in the creek before August if you can.

Plan a day to play in the creek! Take a photo of your family enjoying the creek and use the space below to tell us your favorite creek memory. Show it to park staff or a campground host to receive your stamp. If you choose the alternate activity at the visitor center, please call the park office at least a week in advance.

My favorite creek memory was



Interpretive Programs

Attend at least three interpretive programs or events. Tell us one thing you learned during the program, and have the park interpreter sign your passport.

Program 1: Title: _____

Date: _____ **Interpreter initials** _____

One thing I learned was:

Program 2: Title: _____

Date: _____ **Interpreter initials** _____

One thing I learned was:

Program 3: Title: _____

Date: _____ **Interpreter initials** _____

One thing I learned was:



Take a Hike

Take a nature stroll through Camp Cuivre. You may park in the small gravel lot in front of the Lake Shelter gate, or in front of the Camp Cuivre gate if you need a paved area to park. The roads through the camp are paved and mostly level. We recommend taking binoculars for birdwatching, especially if you come in the morning. Cuivre River State Park is a designated Important Bird Area (IBA) because it is the largest patch of woodland habitat in Lincoln County. This makes it an important stopover for migrating birds, and a place for many unique species to spend the summer. Deer and other wildlife are often seen around the camp. While the buildings found here are not the original Civilian Conservation Corps buildings, this was the location of one of the CCC camps. When World War II broke out, the CCC was disbanded and the camp was used by the Missouri State Guard as a training camp.

Use the space below to tell us what you saw or heard during your hike.

Date of hike: _____
