

# Sam A. Baker State Park

**BY THE NUMBERS**

**LOCATION:** Wayne County

**NUMBER OF ACRES:** 5,323.62

**NUMBER OF FULL-TIME STAFF:** 8

**NUMBER OF PART-TIME STAFF:** 15

**VOLUNTEER HOURS:**\* 5,534

**STEWARDSHIP HOURS:** 1,371.25

**2022 ATTENDANCE:**\* 1,103,364

**MILES OF TRAIL:** 32.5

**NUMBER OF STRUCTURES:** 53

**MILES OF ROADWAYS:** 3.5

**NUMBER OF PROGRAMS PRESENTED:**\* 131

**STATE SALES TAX PAID:**\* \*\* \$49,752.39

**LOCAL SALES TAX PAID:**\* \*\* \$20,607.50

**TOTAL SALES TAX:** \$70,359.88

**BUDGET**

**SMALL MAINTENANCE & REPAIR BUDGET:** \$37,000.00

**ANNUAL BUDGET:** \$560,308.00

**CAMPING & LODGING**

**NUMBER OF CAMPING NIGHTS SOLD:**\* 14,714

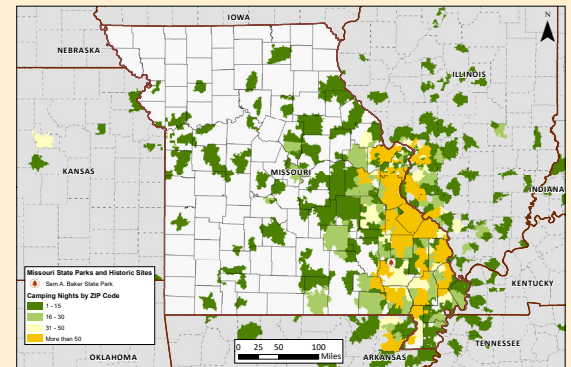
**NUMBER OF LODGING NIGHTS SOLD:**\* † 2,649

**NUMBER OF CAMPSITES:** 200

**NUMBER OF LODGING UNITS:**\* † 19

**NUMBER OF OVERNIGHT GUESTS:**\* † 51,751

**CAMPING NIGHTS SOLD BY ZIP CODE:** >>>>>>



**SPECIAL EVENTS**

**MISSOURI STATE PARK EVENTS:** 5

**SIGNATURE EVENT:** Keep Baker Beautiful Day

**PHOTO ALBUM**



\* All numbers through December 2022. † Information includes park and concession-run operations. \*\* Estimated park and concession sales tax paid.