

Meramec State Park

BY THE NUMBERS

LOCATION: Crawford, Franklin and Washington counties

NUMBER OF ACRES: 6,896.33

NUMBER OF FULL-TIME STAFF: 10

NUMBER OF PART-TIME STAFF: 25

VOLUNTEER HOURS:* 4,594

STEWARDSHIP HOURS: 1,588

2022 ATTENDANCE:* 363,543

MILES OF TRAIL: 14.4

NUMBER OF STRUCTURES: 54

MILES OF ROADWAYS: 9.88

NUMBER OF PROGRAMS PRESENTED:* 431

STATE SALES TAX PAID:** ** \$44,897.13

LOCAL SALES TAX PAID:** ** \$23,909.71

TOTAL SALES TAX: \$68,806.85

BUDGET

SMALL MAINTENANCE & REPAIR BUDGET: \$47,000.00

CAPITAL IMPROVEMENTS PROJECTS IN PROGRESS:* 1

CAPITAL IMPROVEMENTS PROJECTS COMPLETED:* 1

ANNUAL BUDGET: \$726,421.00

CAMPING & LODGING

NUMBER OF CAMPING NIGHTS SOLD:* 18,224

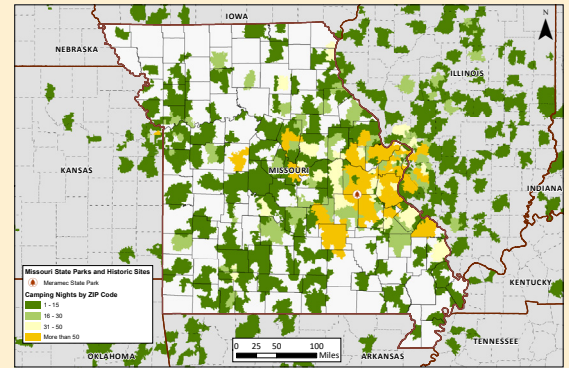
NUMBER OF LODGING NIGHTS SOLD:* † 2,702

NUMBER OF CAMPSITES: 216

NUMBER OF LODGING UNITS:* † 41

NUMBER OF OVERNIGHT GUESTS:* † 61,121

CAMPING NIGHTS SOLD BY ZIP CODE: >>>>>>



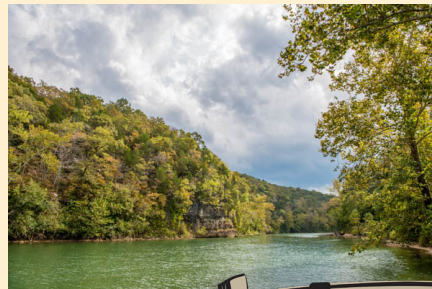
SPECIAL EVENTS

MISSOURI STATE PARK EVENTS: 2

THIRD PARTY EVENTS: 9

SIGNATURE EVENT: Spooktacular

PHOTO ALBUM



* All numbers through December 2022. † Information includes park and concession-run operations. ** Estimated park and concession sales tax paid.