

Lake Wappapello State Park

BY THE NUMBERS

LOCATION: Wayne County

NUMBER OF ACRES: 1,854.23

NUMBER OF FULL-TIME STAFF: 3

NUMBER OF PART-TIME STAFF: 16

VOLUNTEER HOURS:* 2,705

STEWARDSHIP HOURS: 86.5

2022 ATTENDANCE:* 93,104

MILES OF TRAIL: 20.5

NUMBER OF STRUCTURES: 28

MILES OF ROADWAYS: 3.72

STATE SALES TAX PAID:* ** \$5,009.48

LOCAL SALES TAX PAID:* ** \$2,074.93

TOTAL SALES TAX: \$7,084.41

BUDGET

SMALL MAINTENANCE & REPAIR BUDGET: \$7,500.00

ANNUAL BUDGET: \$292,339.00

CAPITAL IMPROVEMENTS PROJECTS IN PROGRESS:* 2

CAMPING & LODGING

NUMBER OF CAMPING NIGHTS SOLD:* 3,897

NUMBER OF LODGING NIGHTS SOLD:* † 483

NUMBER OF CAMPSITES: 74

NUMBER OF LODGING UNITS:† 13

NUMBER OF OVERNIGHT GUESTS:* † 11,270

CAMPING NIGHTS SOLD BY ZIP CODE: >>>>>>

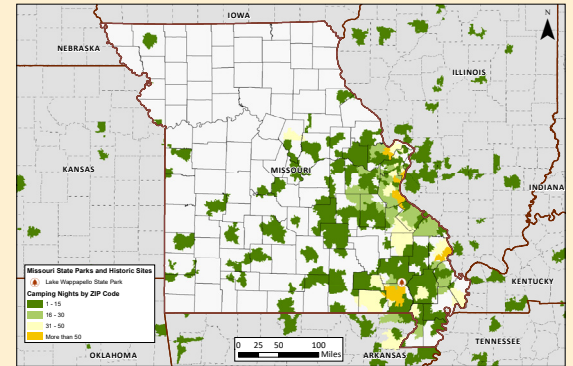


PHOTO ALBUM



* All numbers through December 2022. † Information includes park and concession-run operations. ** Estimated park and concession sales tax paid.